

Indiana Community Outreach Program Society of American Foresters

2005 National Convention
Fort Worth Texas



Lee E. Huss, CF Indiana Chair

What profession affects every aspect of your life, everyday?

Chances are your answer wasn't forestry.

But can you imagine life with no clean water, no homes for people or wildlife, no places to enjoy the outdoors?

For 100 years, professional foresters have been working hard to ensure that neither you nor future generations have to imagine such a life.

Founded in 1900 by Gifford Pinchot, the Society of American Foresters (SAF) is the scientific and educational organization representing the forestry profession in the United States. It is the largest professional forestry association in the world.



SAF Mission Statement

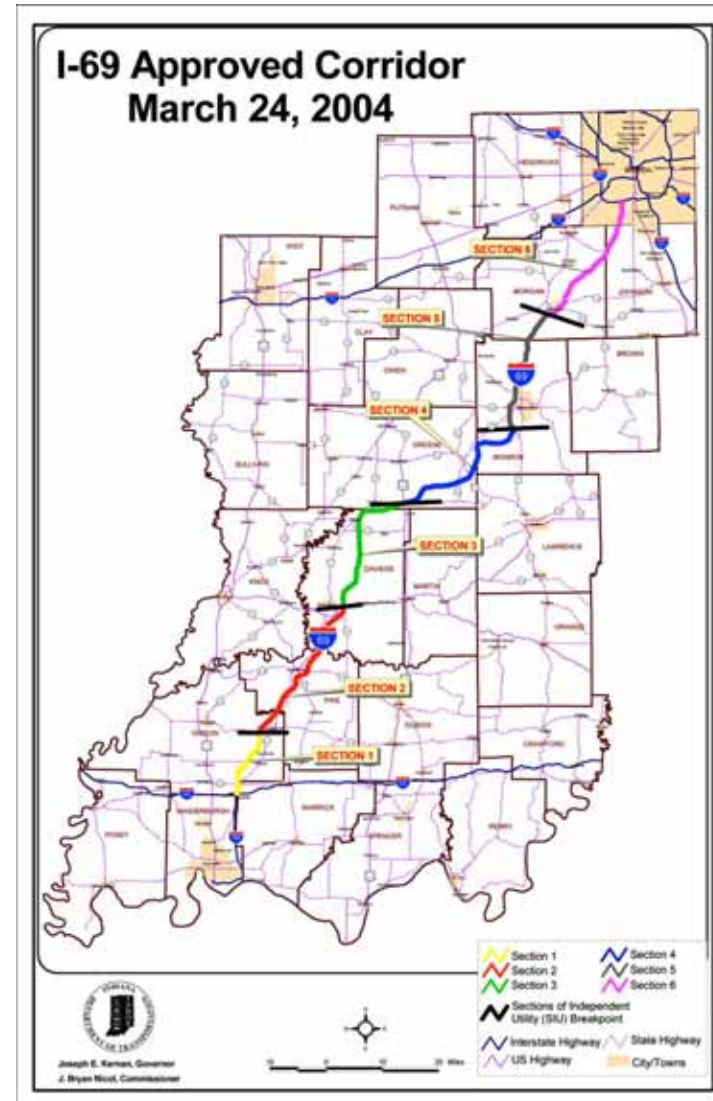
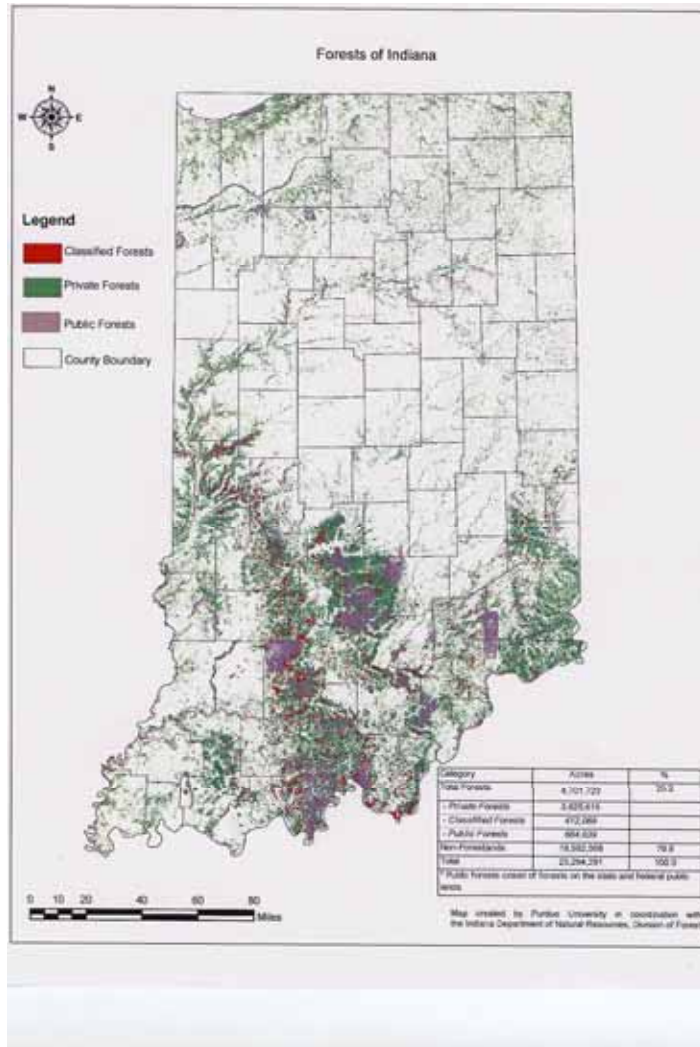
The mission of the Society of American Foresters is to advance the science, education, technology, and practice of forestry; to enhance the competency of the members; to establish professional excellence; and to use the knowledge, skills, and conservation ethic of the profession to ensure the continues health and use of the forest ecosystems and the present and future availability of forest resources to benefit the society.



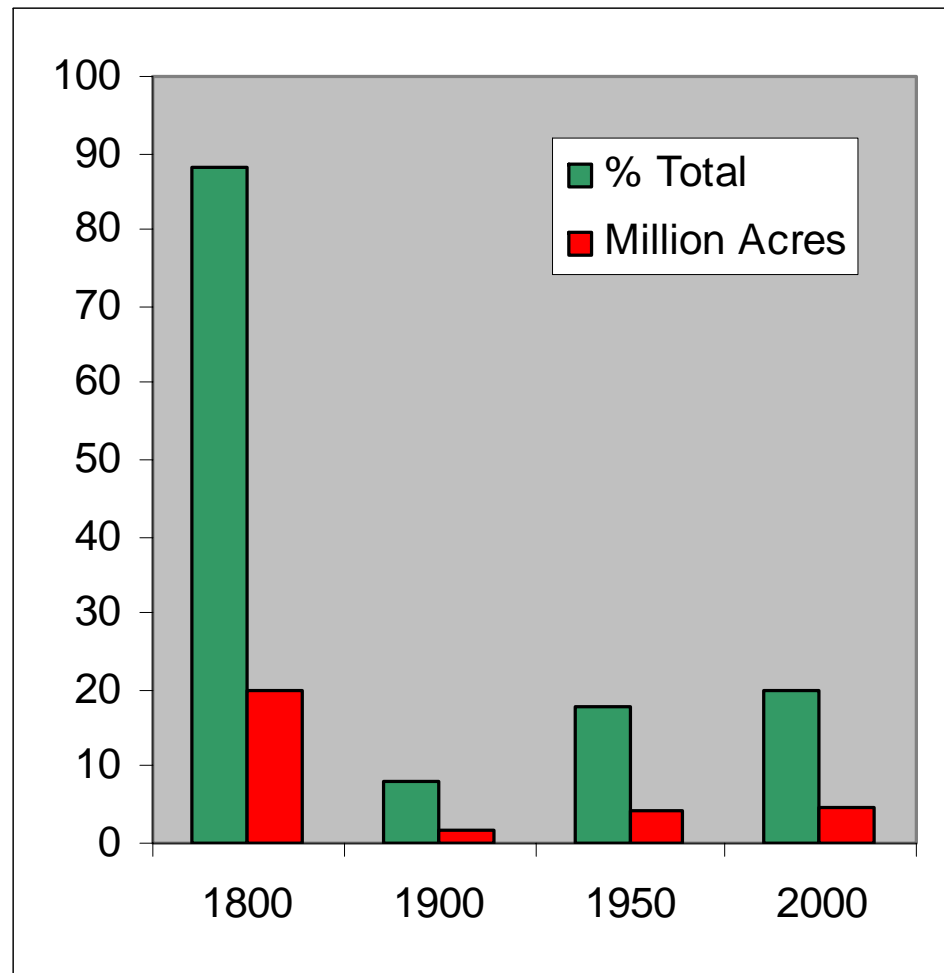
ISAF Position Papers

- Right to practice forestry
- Timber harvesting on the Hoosier National Forest
- Land use
- Proposed alternatives for the I-69 Indianapolis – Evansville Extension

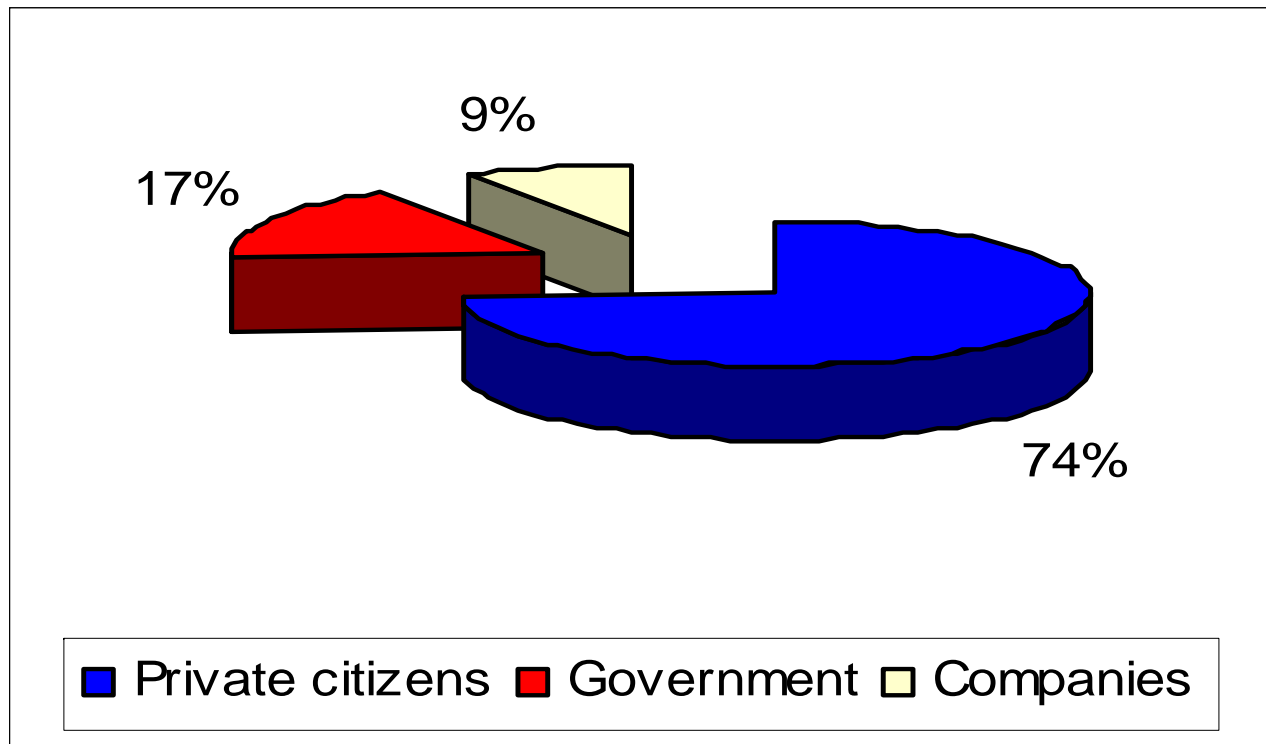
I-69 Corridor



Indiana has more forest today than 100 years ago



Who owns Indiana's forests?



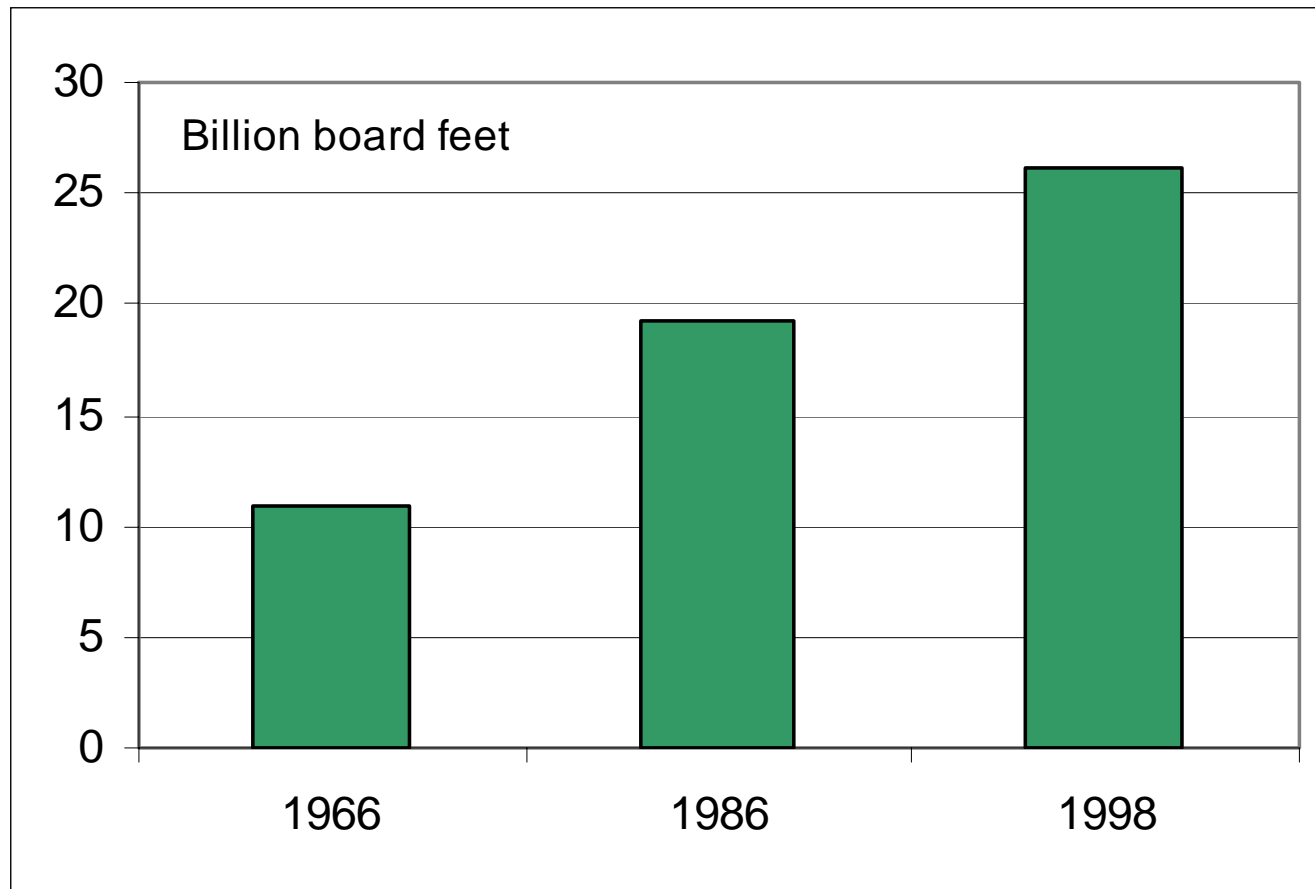
1978: 50,000 people and entities owned forest land

1994: 150,000 people and entities owned forest land indicating a fragmentation of the forestland base into smaller parcel sizes

In Indiana timber is growing 2.3 times faster than it is being cut

Measurement	Million Cubic Feet	% Total Living Volume
Average Mortality	61	0.90%
Average Harvest	88	1.30%
Average Growth	288	4%

Indiana's timber inventory is 140% larger than it was 36 years ago



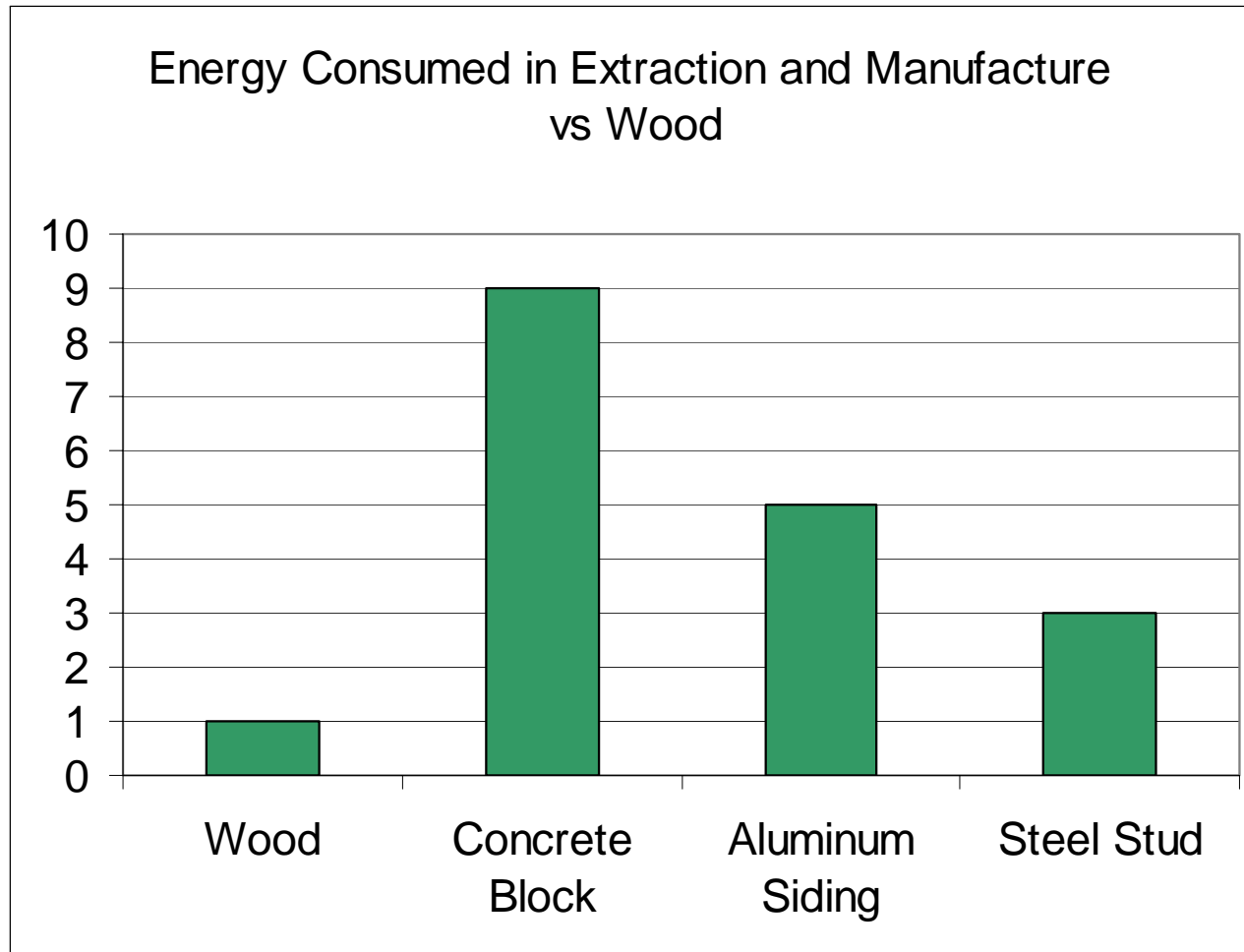
Why is wood the choice?

- Renewable
- Recyclable
- Biodegradable
- Non-toxic
- Most people like it

Environmentally
friendly



Wood costs less and has less impact on the land!



Role of Professional Foresters

Indiana hardwood timber is a valuable asset to forest landowners. If managed with a long-term vision, the forest resource will produce a handsome rate of return as well as provide a host of other benefits to the landowner and the community.

- Although logging may precede land clearing for agriculture or development, it is not the cause of forest loss and should not be equated with land use conversion.
- Only 25-30% of timber sales in Indiana involve a professional forester.
- High-grade logging most often occurs when forests are not managed by professional foresters – removing only the better trees and leaving poor quality.

- Clearcutting is a legitimate forest management tool rarely used in Indiana today. Even when a managed forest is clearcut, it is not destroyed. New tree seedlings quickly grow, ensuring timber for future generations and providing wildlife habitat for species that prefer younger stages of forest growth.

- Indiana's voluntary "Best Management Practices" (BMPs) and logger training have improved logging practices. BMPs are most likely to be correctly employed on forests managed by professional foresters.
- Indiana foresters are concerned about forest fragmentation and loss caused by land parceling and sprawl development. They assist land planners, developers, and community leaders in making sound land use decisions concerning forest resources.

Professional Foresters are the Nation's Forest Managers

We are dedicated to applying our knowledge and passion to the sound management of our forests to provide for the needs of current and future generations. ISAF is dedicated to promoting professionalism by providing continuing education opportunities for its members. It speaks for the forestry profession in Indiana on forest-related issues.

Outreach Programs

- Meetings with government officials
- Foresters in the schools program
- Habitat for Humanity
 - Lot clearing
 - Tree planting
- Develop ISAF educational displays
- ISAF web page







<http://www.indianasaf.org/>

<http://www.safnet.org/>

