

A Guide to Visual Quality Objectives

Categories of Visually Altered Forest Landscapes

VISUAL QUALITY OBJECTIVES

PRESERVATION

Alteration is very small in scale, and not easily distinguishable from the pre-harvest landscape
 Percent alteration in perspective view: 0% of ground may be visible

CLEARCUT HARVESTING



CLEARCUT HARVESTING 0% ALTERED



CLEARCUT HARVESTING 0% ALTERED

RETENTION CUT HARVESTING



RETENTION CUT HARVESTING 0% ALTERED



RETENTION CUT HARVESTING 0% ALTERED

PARTIAL CUT HARVESTING



PARTIAL CUT HARVESTING 0% VOLUME/STEMS REMOVED



PARTIAL CUT HARVESTING 0% VOLUME/STEMS REMOVED

RETENTION

Alteration is difficult to see, small in scale, and natural in appearance
 Percent alteration in perspective view: 0% to 1.5% of ground may be visible



CLEARCUT HARVESTING 1% ALTERED



CLEARCUT HARVESTING <1% ALTERED



RETENTION CUT HARVESTING .05% ALTERED



RETENTION CUT HARVESTING 1.4% ALTERED



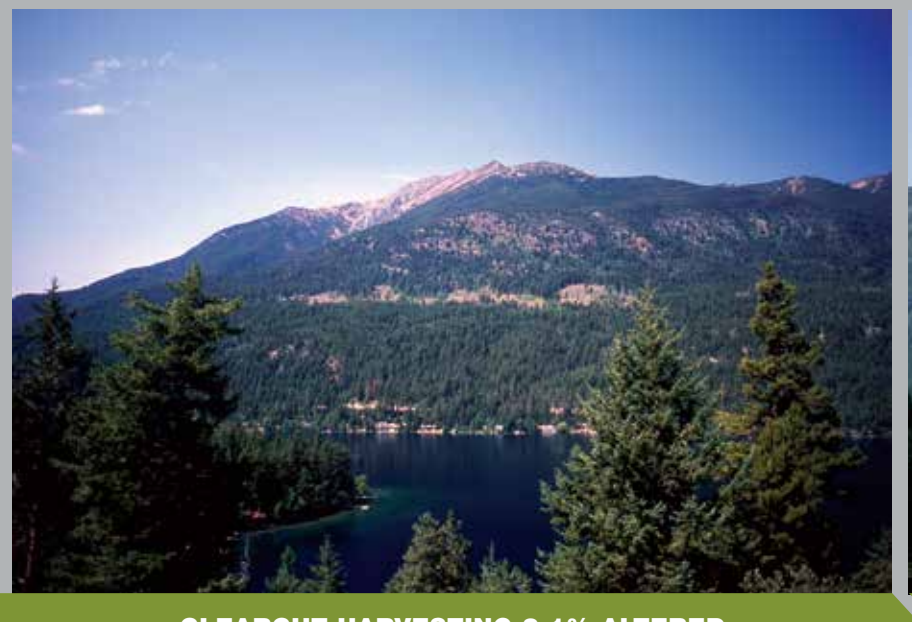
PARTIAL CUT HARVESTING 46% VOLUME/STEMS REMOVED



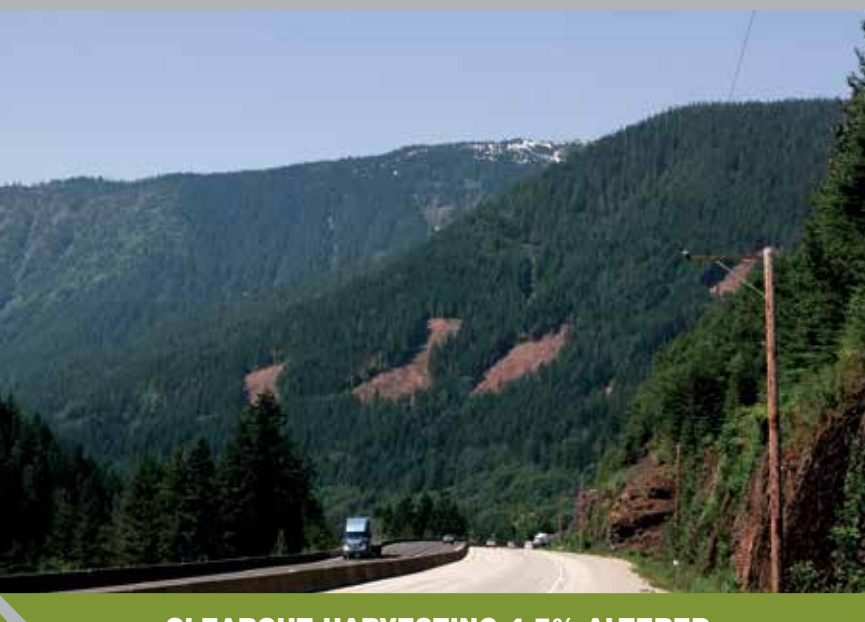
PARTIAL CUT HARVESTING 60% VOLUME/STEMS REMOVED

PARTIAL RETENTION

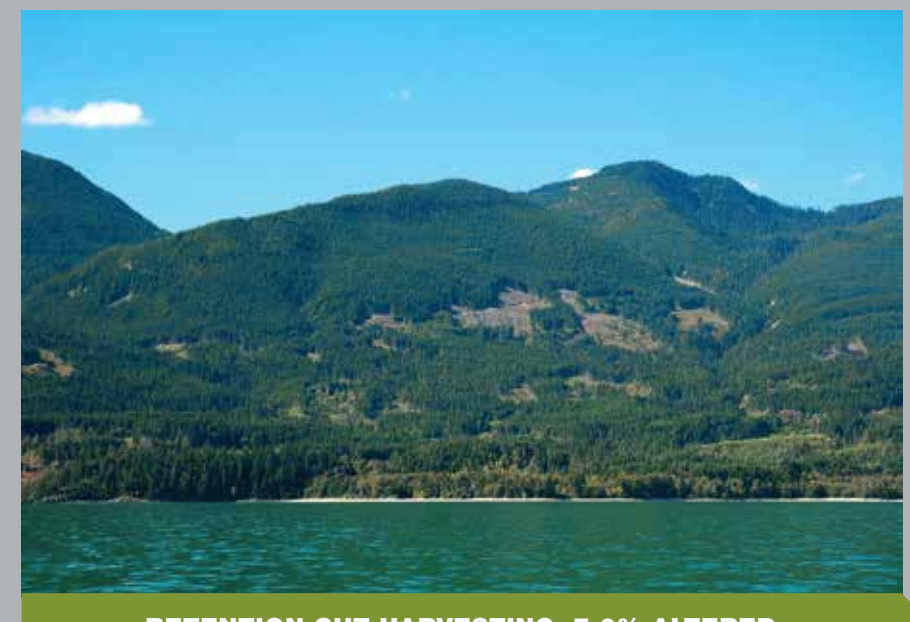
Alteration is easy to see, small to medium in scale, and natural and not rectilinear or geometric in shape
 Percent alteration in perspective view: 1.6% to 7% of ground may be visible



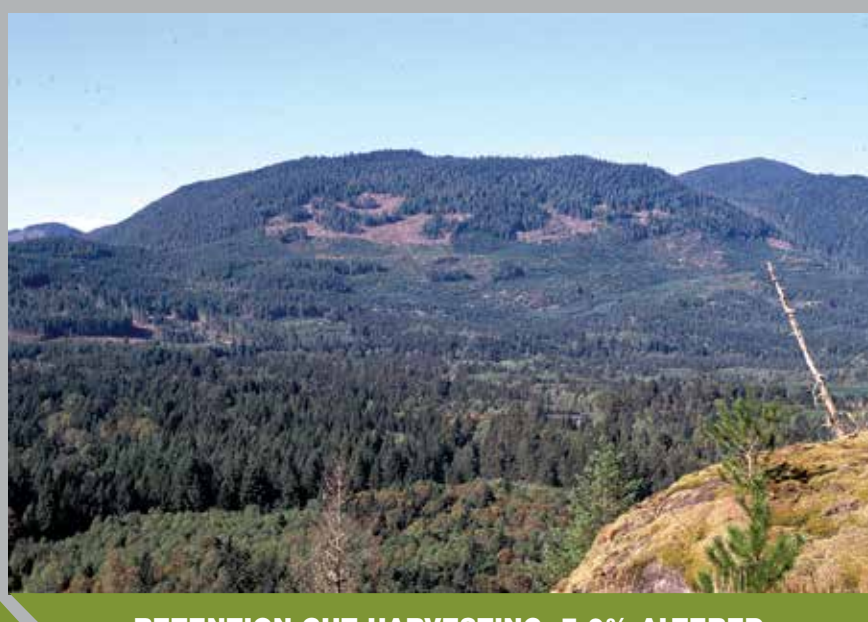
CLEARCUT HARVESTING 3.1% ALTERED



CLEARCUT HARVESTING 4.7% ALTERED



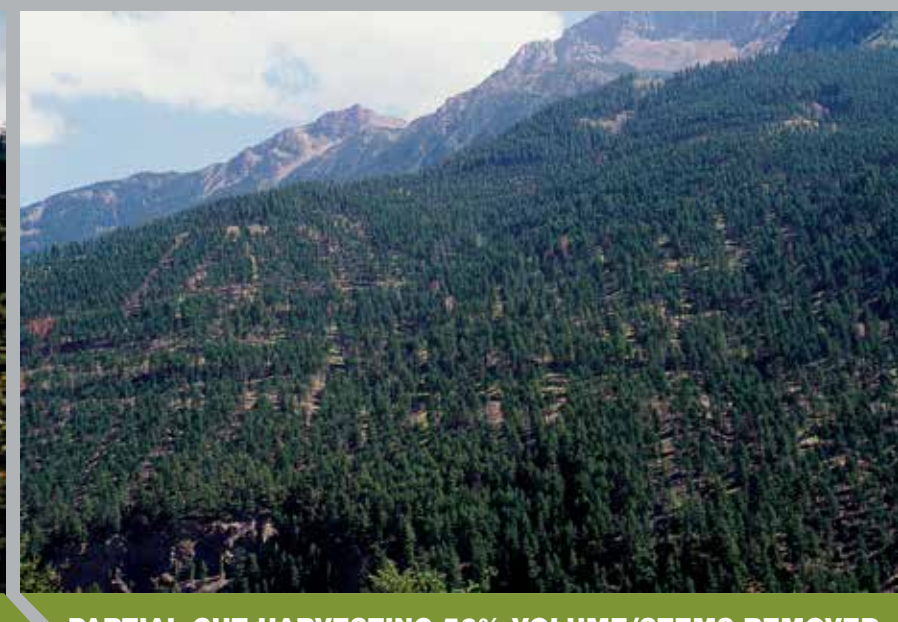
RETENTION CUT HARVESTING 7.0% ALTERED



RETENTION CUT HARVESTING 7.0% ALTERED



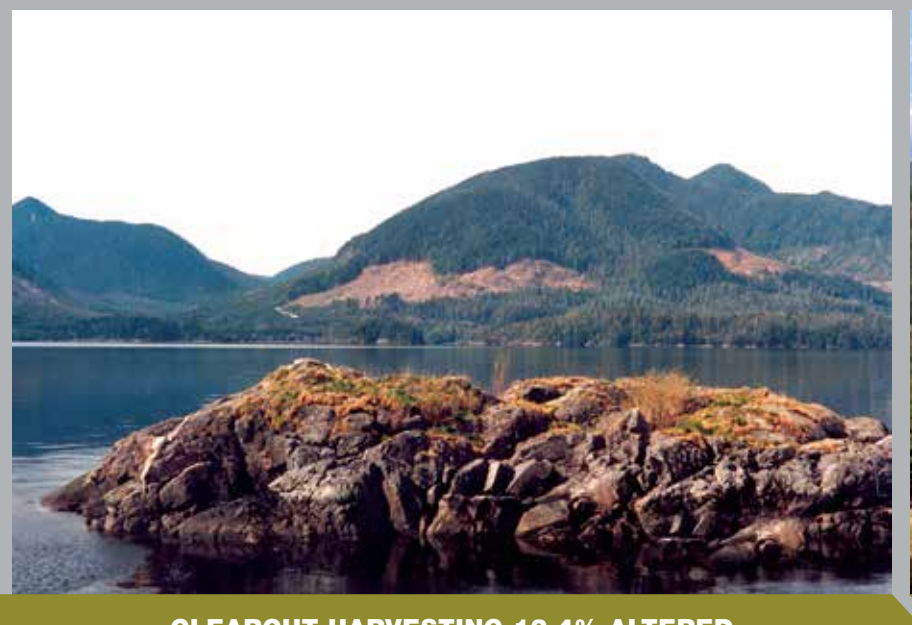
PARTIAL CUT HARVESTING 44% VOLUME/STEMS REMOVED



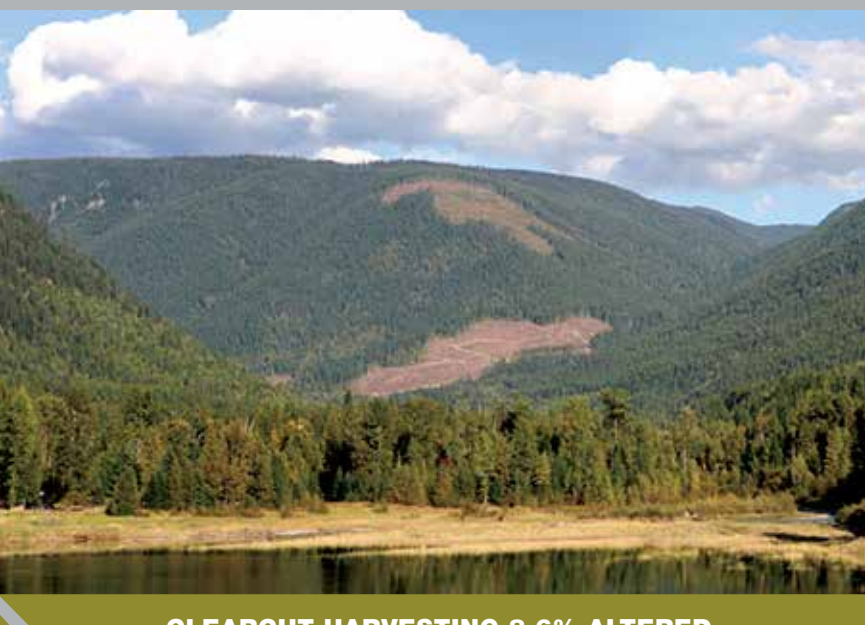
PARTIAL CUT HARVESTING 56% VOLUME/STEMS REMOVED

MODIFICATION

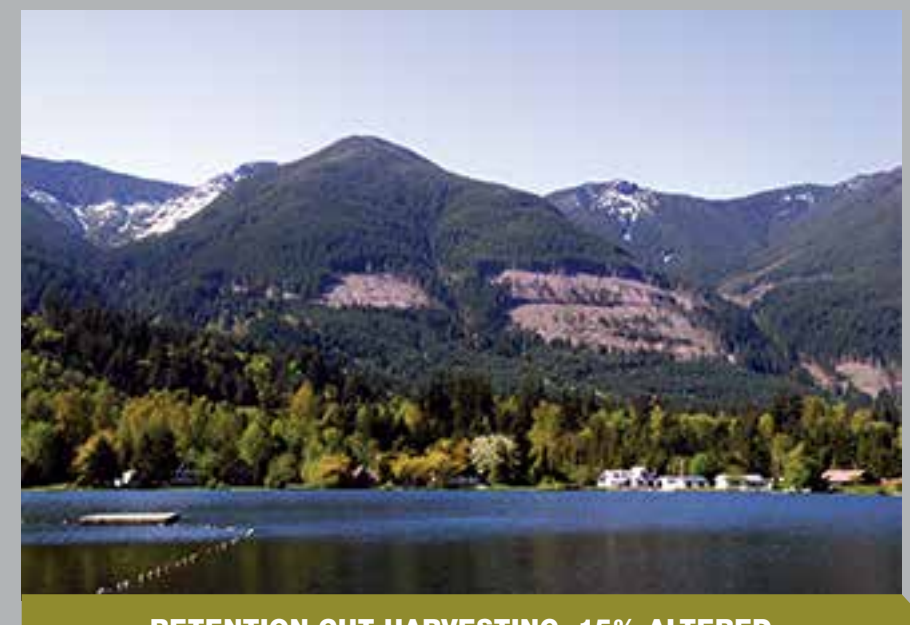
Alteration is very easy to see, and is:
A large in scale and natural in its appearance, or
B small to medium in scale but with some angular characteristics
 Percent alteration in perspective view: 7.1% to 18% of ground may be visible



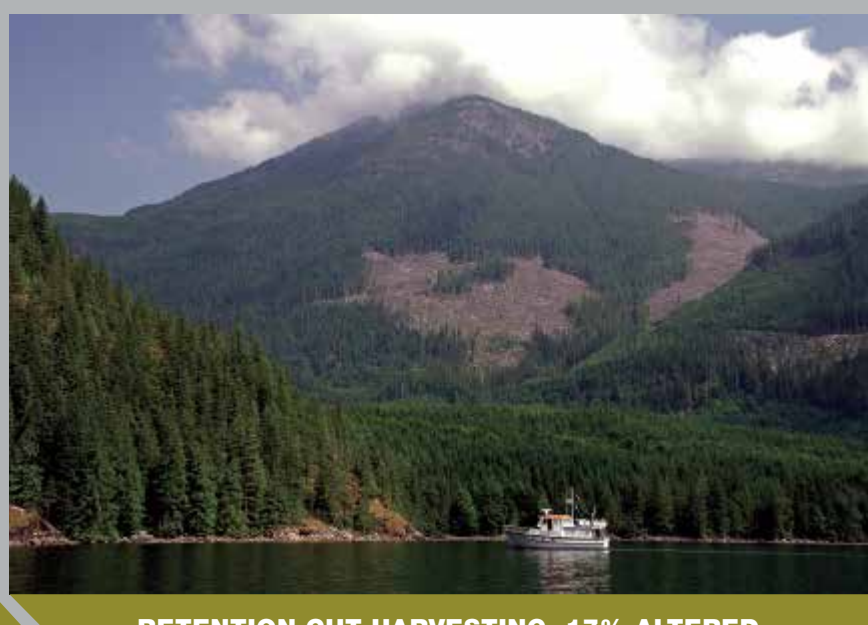
CLEARCUT HARVESTING 12.4% ALTERED



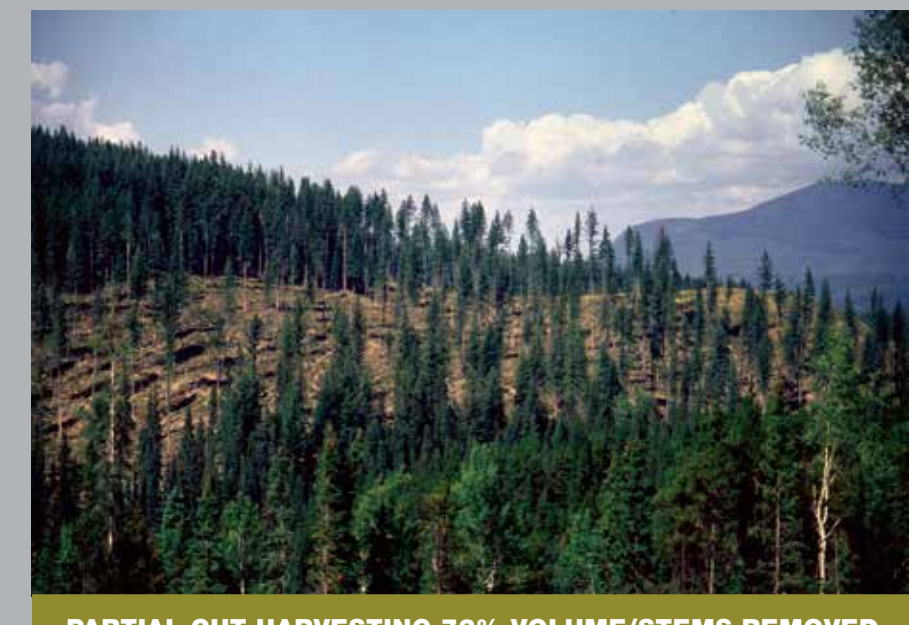
CLEARCUT HARVESTING 8.6% ALTERED



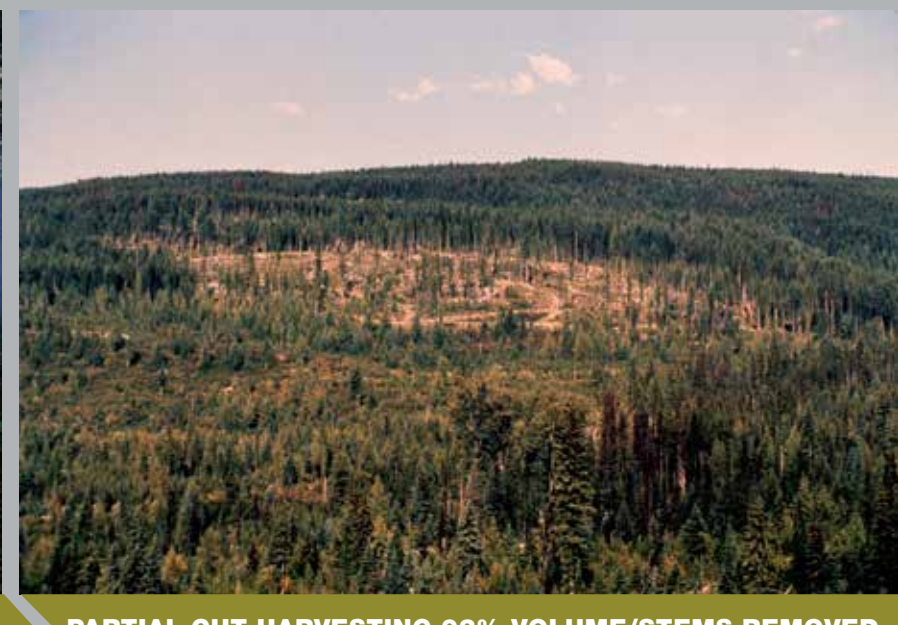
RETENTION CUT HARVESTING 15% ALTERED



RETENTION CUT HARVESTING 17% ALTERED



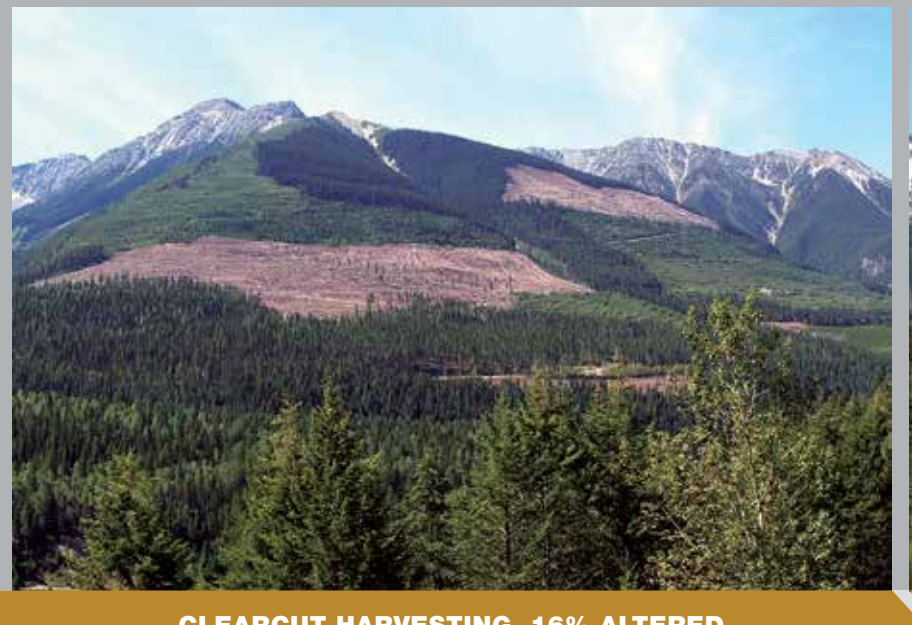
PARTIAL CUT HARVESTING 72% VOLUME/STEMS REMOVED



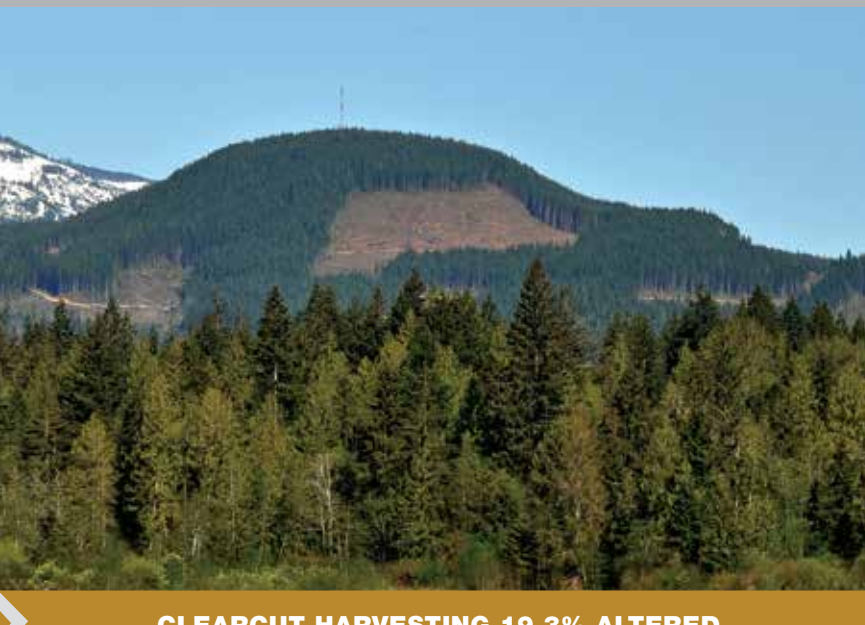
PARTIAL CUT HARVESTING 92% VOLUME/STEMS REMOVED

MAXIMUM MODIFICATION

Alteration is very easy to see, and is:
A very large in scale,
B rectilinear and geometric in shape, or
C both
 Percent alteration in perspective view: 18.1% to 30% of ground may be visible



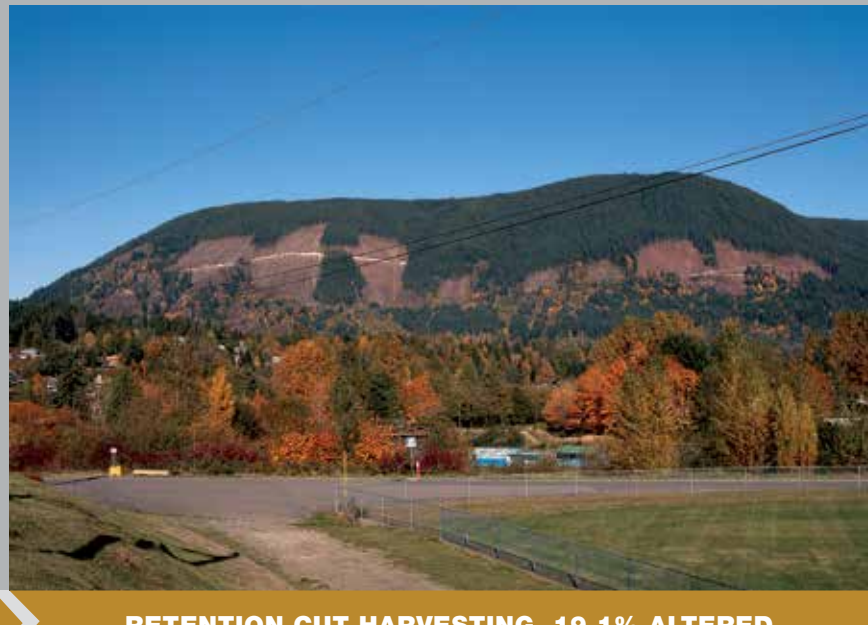
CLEARCUT HARVESTING 16% ALTERED



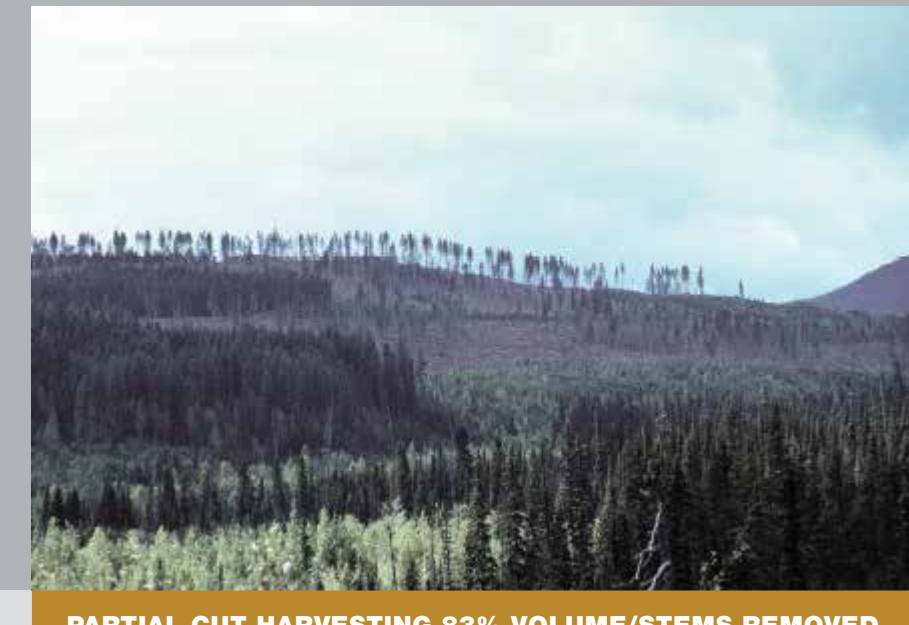
CLEARCUT HARVESTING 19.3% ALTERED



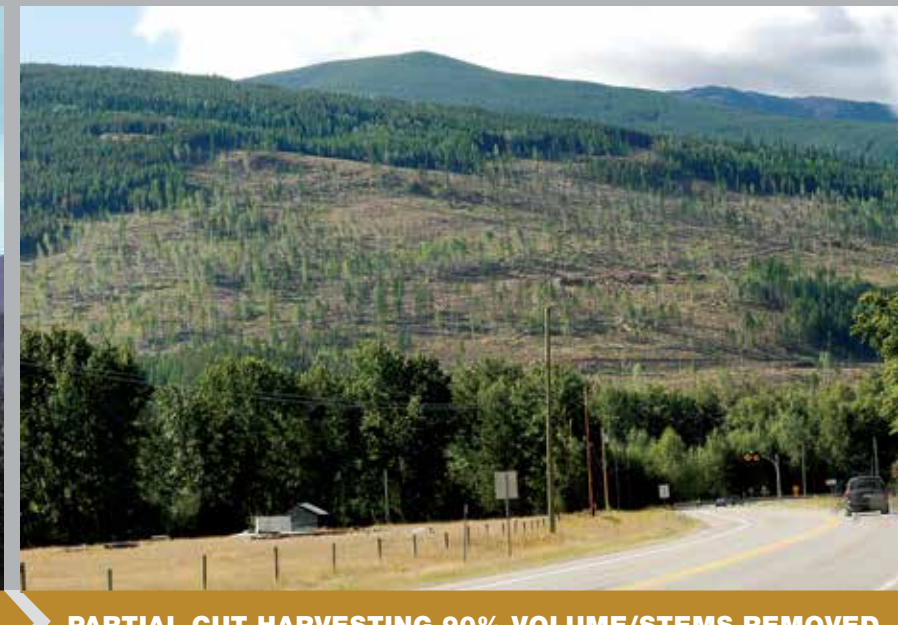
RETENTION CUT HARVESTING 12.5% ALTERED



RETENTION CUT HARVESTING 19.1% ALTERED



PARTIAL CUT HARVESTING 83% VOLUME/STEMS REMOVED



PARTIAL CUT HARVESTING 90% VOLUME/STEMS REMOVED

THE DEFINITIONS

Visual Quality Objectives
 Visual Quality Objectives are defined in the Forest Planning and Practices Regulation to provide qualitative descriptions of expected visual conditions.

Achieving Visual Quality Objectives
 The application of Visual Design Concepts and Principles are essential to the success of achieving Visual Quality Objectives.

Indicators for Achieving Visual Quality Objectives
 Visual Quality Research suggests that scale of alteration for clearcutting and remaining tree density (volume/stems per hectare) for partial cutting are useful indicators of achieved visual condition.

CLEARCUT HARVESTING ALTERATION GUIDE

The clearcut alteration percentages allowed for each Visual Quality Objective

Visual Quality Objective	0	5	10	15	20	25	30
Preservation	0%						
Retention	0 - 1.5%						
Partial Retention	1.6 - 7.0%						
Modification	7.1 - 18.0%						
Maximum Modification	18.1 - 30.0%+						

ALTERATION GUIDE APPLIED TO AN IDENTIFIABLE LANDFORM

Calculate percent alteration using this equation:

$$\left(\frac{\text{CUTBLOCK B} + \text{CUTBLOCK C}}{\text{LANDFORM A}} \right) \times 100 = \% \text{ ALTERATION}$$

Percentage alteration numbers must be applied to readily identifiable landforms (not applied against an entire visible landscape). A landform is a distinct topographic feature, is three-dimensional in form, and is generally defined by ridges, valleys, shorelines, and skylines. Landform examples include hills and mountains. For more information: www.for.gov.bc.ca/hfp/values/visual/index.htm

PARTIAL CUT HARVESTING ALTERATION GUIDE

Use this table to calculate volume/stems per hectare removed for partial cutting

This Partial Cut Harvesting Alteration Guide may be applied across the landscape as this measure is landform independent.

Harvest Types

- RETENTION
- PARTIAL RETENTION
- MODIFICATION

TREE HEIGHT (m) OF RESIDUAL TREES	VOLUME (STEMS) REMOVED (m³)										
	0	5	10	15	20	25	30	35	40	45	50
10	R	R	R	R	R	R	R	R	R	PR	PR
20	R	R	R	R	R	PR	PR	PR	PR	PR	PR
30	R	R	R	R	PR	PR	PR	PR	PR	PR	PR
40	R	R	PR	PR	PR	PR	PR	PR	PR	M	M
50	PR	PR	PR	PR	PR	PR	PR	M	M	M	M
60	PR	PR	PR	PR	PR	M	M	M	M	M	M
70	PR	PR	M	M	M	M	M	M	M	M	M
80	PR	PR	M	M	M	M	M	M	M	M	M
90	M	M	M	M	M	M	M	M	M	M	M