





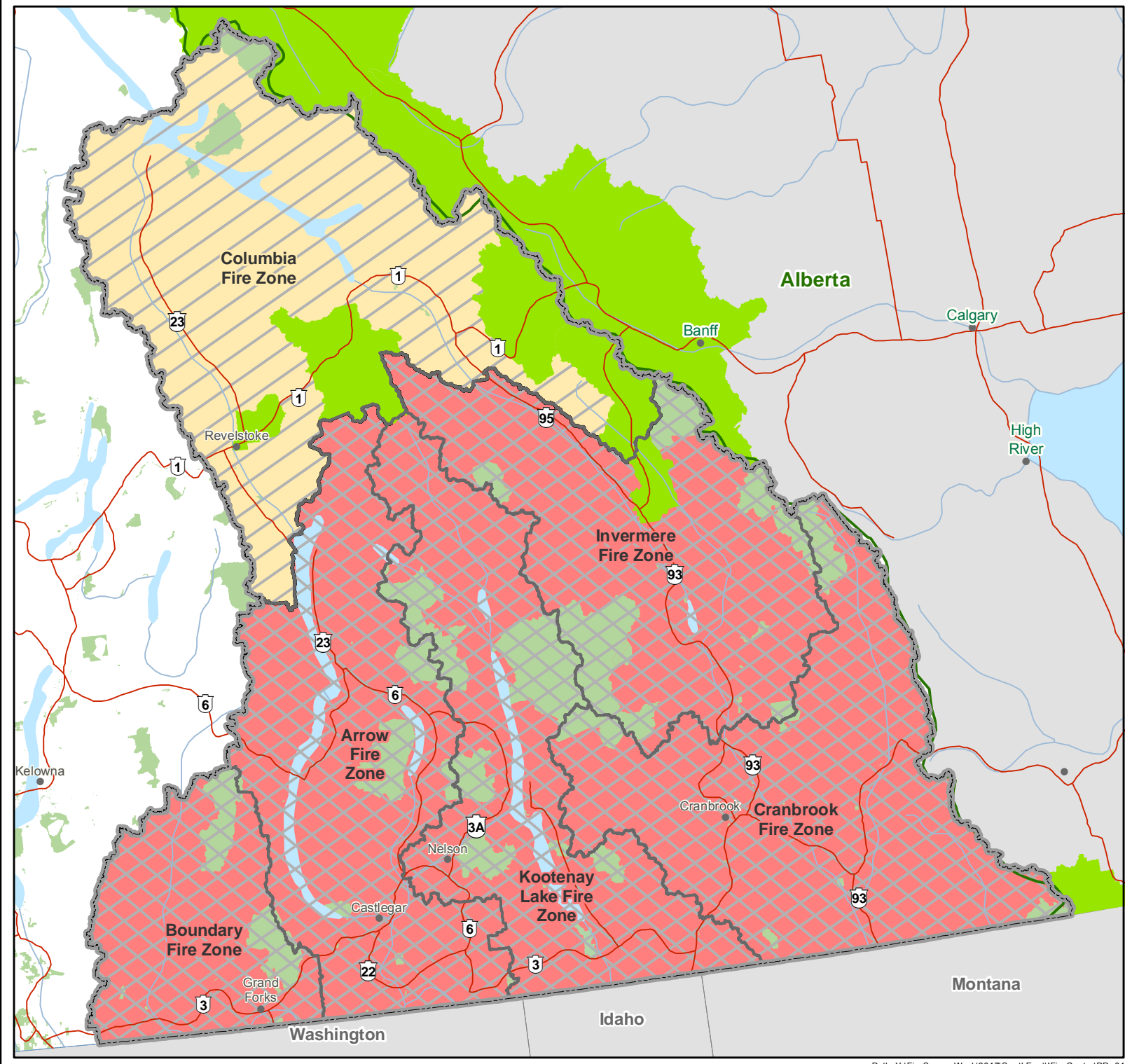
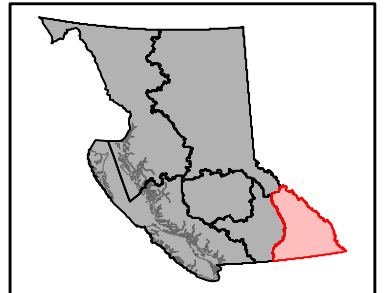


# Southeast Fire Centre Prohibition Areas

 **Prohibition Area A\***  
 **Prohibition Area B\***  
 Southeast Fire Centre  
 Fire Zone Boundary  
 BC Parks / Protected Area  
 National Park

1:2,050,000

0 12.5 25 50 75 Km



**Effective Date:**  
12:00 noon (PDT) September 18, 2017


**\*Prohibition Area A** restricts the following:

- Campfires
- Category 2 open fires
- Category 3 open fires
- Tiki and similar kinds of torches
- Outdoor stoves and portable campfire apparatus that are not CSA or ULC approved or if the flame exceeds 15 cm in length
- Chimineas
- Burn Barrels or Burn Cages of any size or description
- Air Curtain Burners
- Sky Lanterns
- Fireworks
- Binary Exploding Targets

**\*Prohibition Area B** restricts the following:

- Category 2 open fires
- Category 3 open fires
- Burn Barrels or Burn Cages of any size or description
- Air Curtain Burners
- Sky Lanterns
- Fireworks
- Binary Exploding Targets

Produced By:



**BRITISH COLUMBIA**

www.gov.bc.ca

Ministry of Forests, Lands & Natural Resource Operations  
BC Wildfire Service

Created Date: September 15, 2017  
Created by: rstohman  
Coordinate System: NAD 1983 Albers

