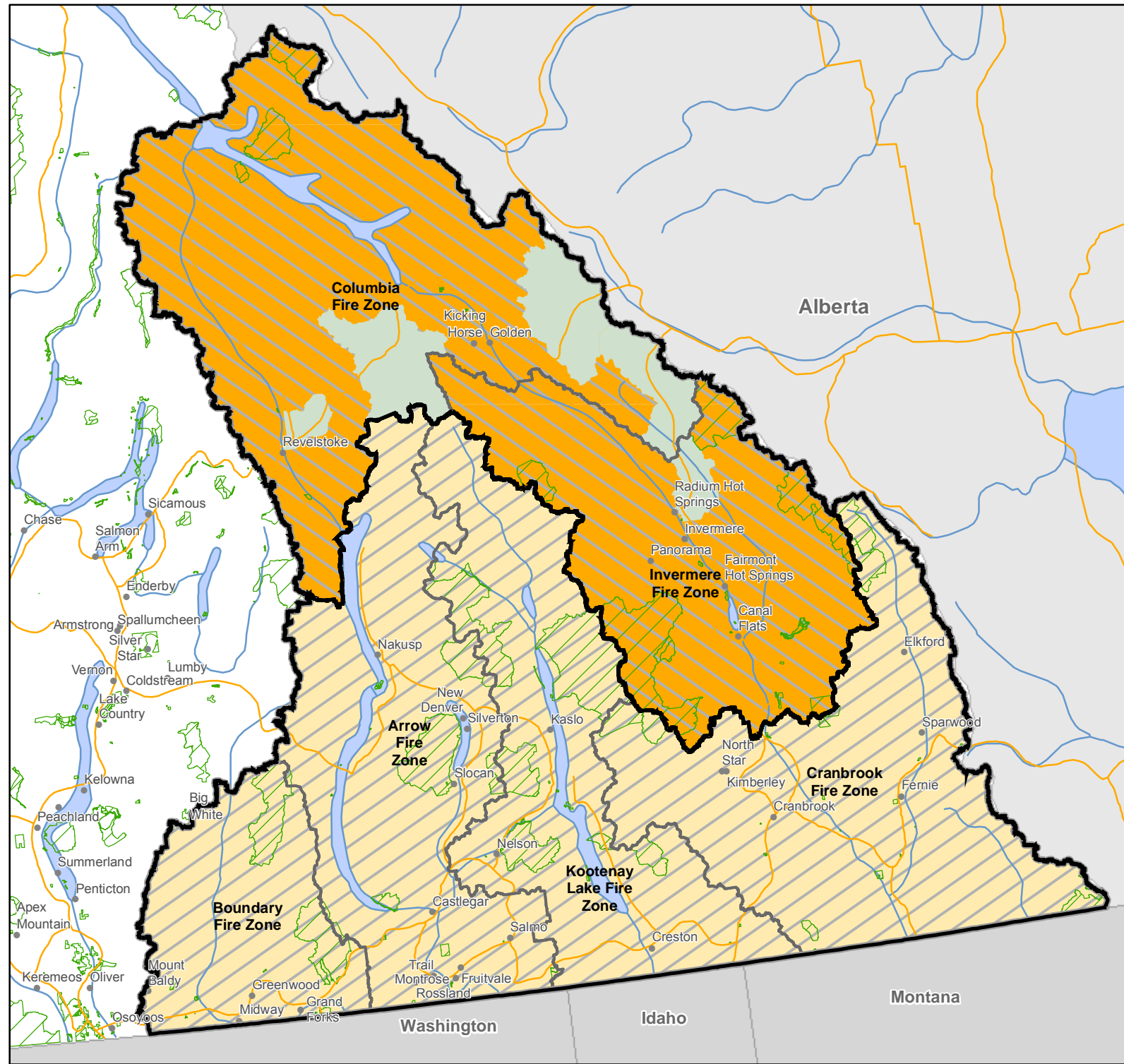


# Southeast Fire Centre Open Fire Prohibitions, Restricted Equipment and Activities

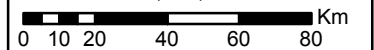


- Southeast Fire Centre
- Fire Zone Boundaries
- BC Parks / Protected Areas
- National Parks

Prohibition Area 1

Prohibition Area 2

1:2,100,000



- \*Prohibition Area 1 restricts the following:**
- Category 2 open fire
  - Category 3 open fire
  - Fireworks, including fire crackers
  - Sky lanterns
  - Air curtain burners
  - Burning barrels or burn cages of any size or description
  - Binary exploding targets
- \*Prohibition Area 2 restricts the following:**
- Category 3 open fire

Produced By:  
**BRITISH COLUMBIA**  
[www.gov.bc.ca](http://www.gov.bc.ca)  
 Ministry of Forests, Lands & Natural Resource Operations  
 BC Wildfire Service

Date/Time Created/Revised: **Sep 09, 2015 1659**  
 Created by: imcdouga  
 Coordinate System: NAD 1983 Albers