



# EVACUATION ALERT

August 4, 2017 1600

Columbia Shuswap Regional District has been advised of the wildfire burning in close proximity to Heather Mountain Lodge, located within the Electoral Area A of the Columbia Shuswap Regional District.

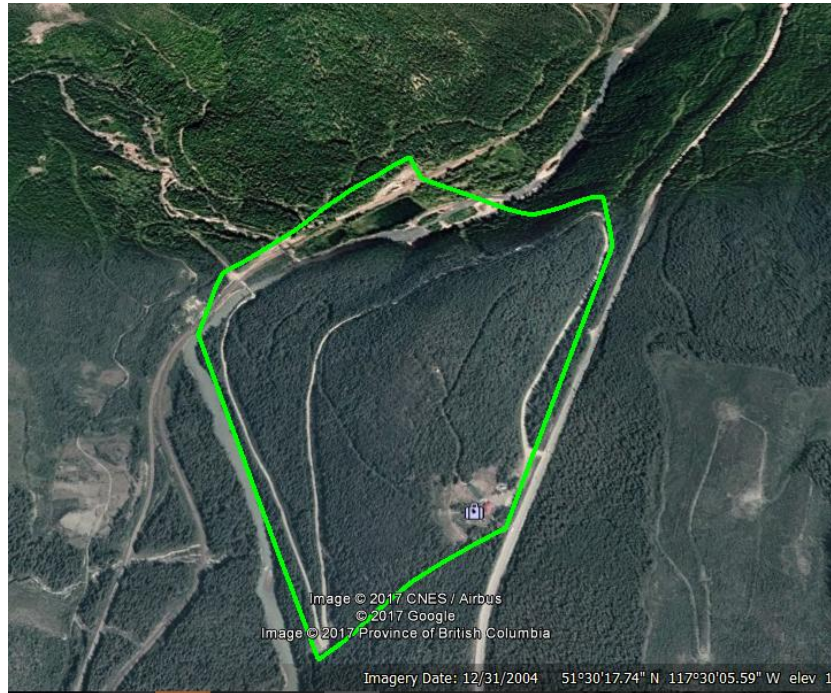


Figure 1. Evacuation Elert Area

The Golden and Area Emergency management program asks that staff and guests of Heather Mountain Lodge, prepare for immediate evacuation on very short notice. Be prepared for worsening conditions.

Parks Canada and BC Wildfire are actively working the fire. Information will be updated as it is received. For additional information please contact

Kyle Hale  
Golden and Area  
Emergency Program Coordinator  
[kyle.hale@goldeneoc.ca](mailto:kyle.hale@goldeneoc.ca)  
Office 250.344.7473  
Cell 250.344.8495