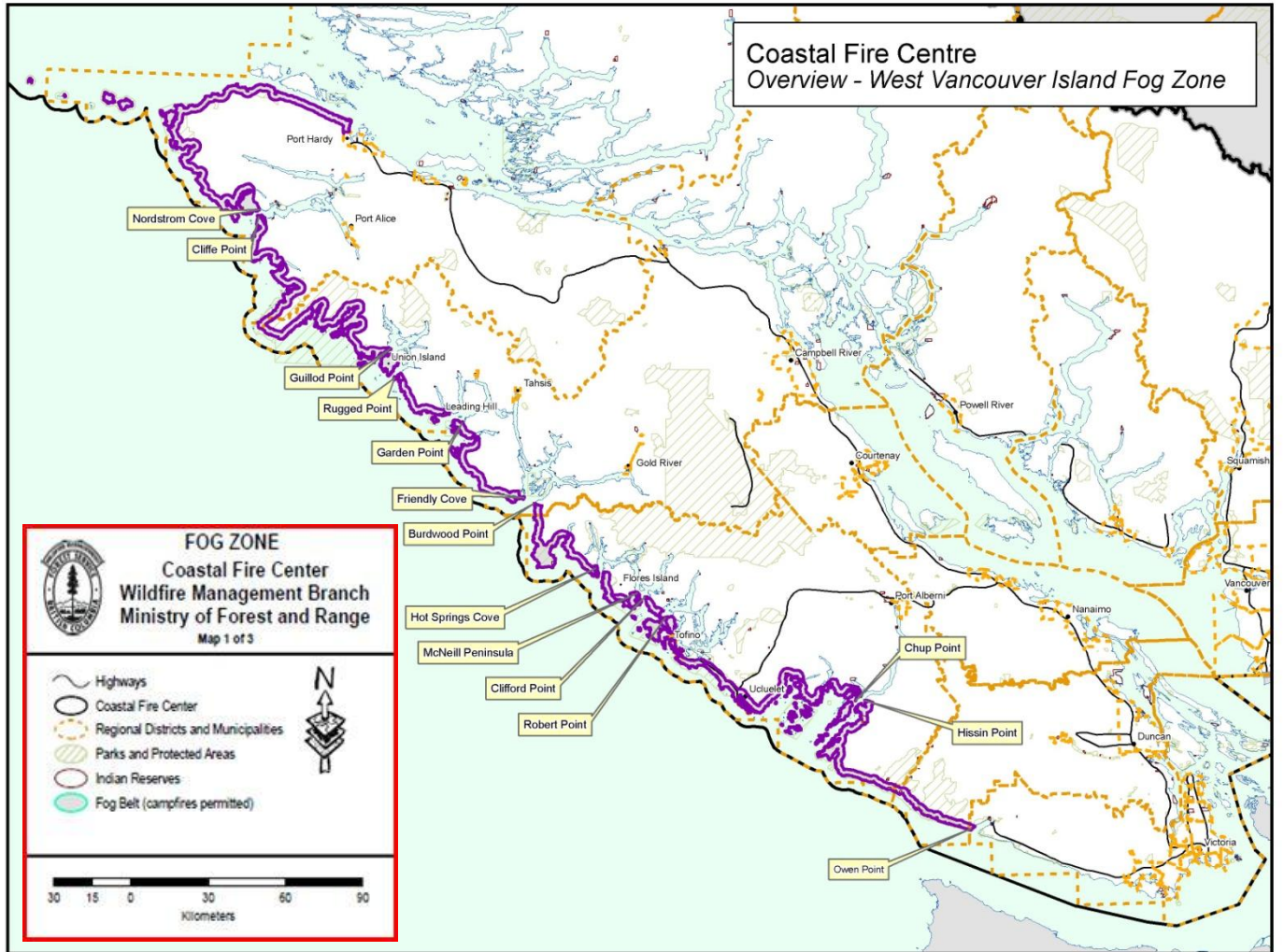


FOG ZONE MAP



BC FOREST SERVICE - COASTAL FIRE CENTRE	O.G. #1.07.01
TITLE: OPEN BURNING & PROHIBITED ACTIVITY GUIDELINE	Appendix D Page 1 of 1

APPENDIX D
DEFINITION OF FOG ZONE

In the Coastal Fire Centre the attached map depicts the fog zone based upon the following description.

The West Coast Fog Zone includes all land running inland 2 kilometres inland from a line commencing at:

- Owen Point near Port Renfrew and continuing north past Cape Beale to Hissin Point, then;
- across Alberni Inlet to Chup Point to exclude the headwaters of Alberni Inlet, then;
- following the shoreline around Toquart Bay to Ucluelet and Tofino, then;
- north to Opitsat IR, Robert Point and Kraan Head to exclude the inner waters of Clayoquot Sound, then;
- along Catface Mountain to Clifford Point then across Millar Channel to McNeill Peninsula to exclude the inner waters of Herbert Inlet, then along the west coast of Flores Island to the northern boundary of Flores Island Provincial Park, then;
- across Sydney Inlet to the northern end of Hot Springs Cove to exclude the inner waters of Shelter and Sydney Inlets, then along the shoreline through Boat Basin Harbour and Estevan Point to Burdwood Point, then;
- across the entrance to Nootka Sound to Friendly Cove to exclude the inner waters of Nootka Sound including Tahsis and Gold River then north along the shoreline of Nootka Island to Garden Point, then;
- across Esperanza Inlet to Leading Hill to exclude the inner waters of Zeballos, Espinosa and Port Eliza Inlets, then north to Rugged Point, then;
- across Kyuquot Channel to Union Island then north to the narrows of Crowther Channel and across to Surprise Island and to Guillod Point to exclude the inner waters of Kyuquot Sound, then;
- west through McKay Cove to Malksope and Ououkinsh Inlet to Brooks Peninsula Provincial Park, then;
- around Brooks Peninsula Provincial Park to Klaskish Inlet and along the shoreline north to Cliffe Point, then;
- north across Quatsino Sound to Nordstrom Cove to exclude Holberg and Neroutsos Inlets, then west to Winter Harbour and San Josef Bay to Cape Scott Provincial Park, then;
- around Cape Scott Provincial Park and the northern end of Vancouver Island to Shushartie Bay then east along Goletas Channel ending at the boundary of the District of Port Hardy.