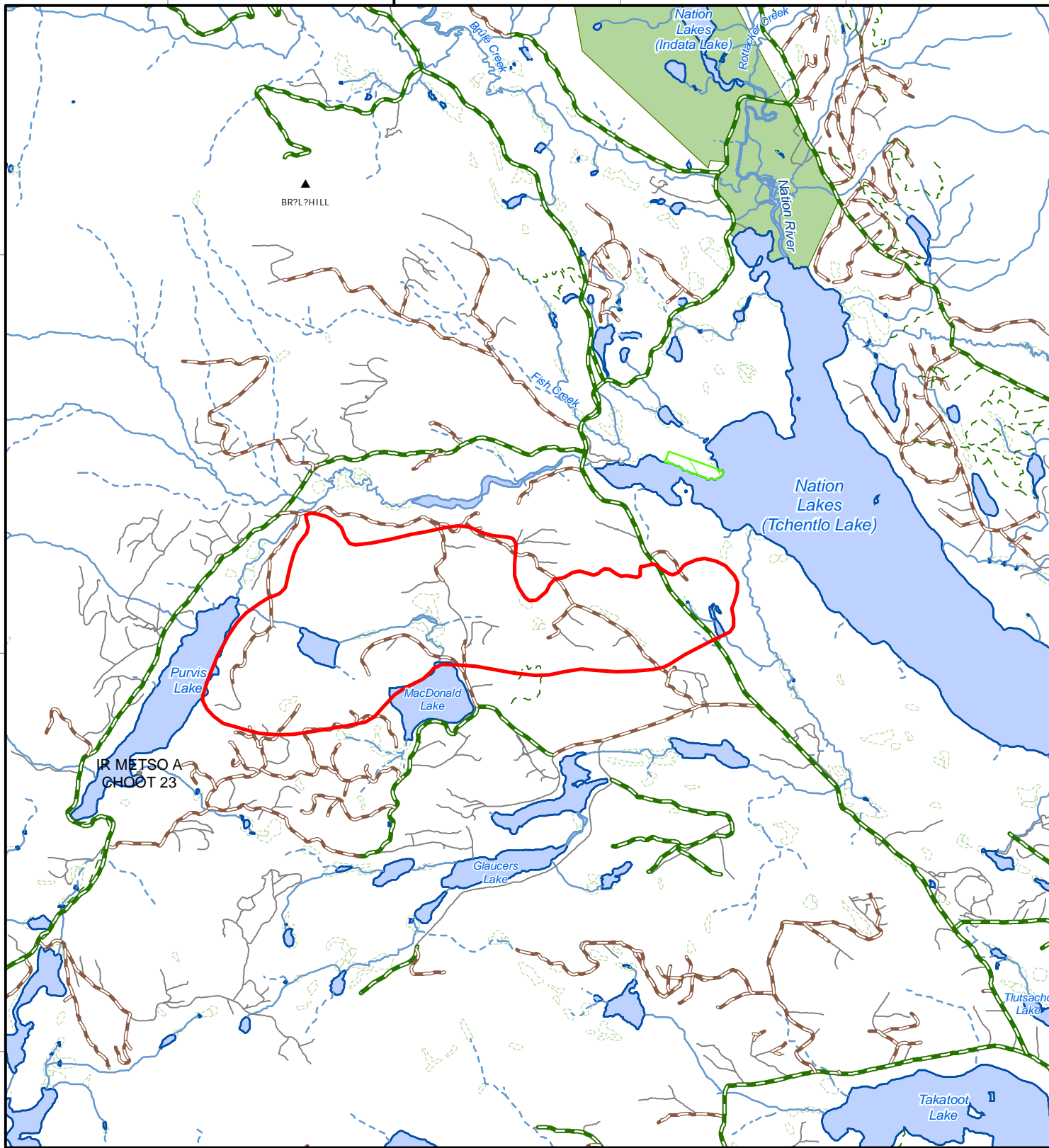


125°20'W



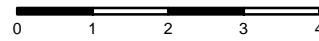
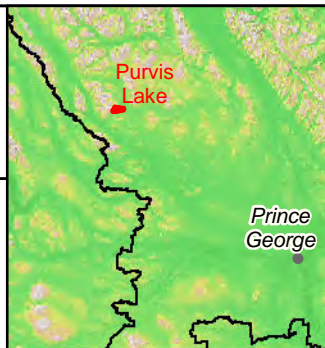
125°20'W

**G51634**  
**Purvis Lake**  
**Public Information Map**

Perimeter Date:  
 August 14, 2018  
 Fire Size:  
 2290.3 Ha



Ministry of  
 Forests, Lands, Natural  
 Resource Operations  
 and Rural Development  
 BC Wildfire Service



Kilometers  
 1:100,000

**Disclaimer:**  
 Wildfire perimeters for the current fire season, including both active and inactive fires, are supplied from various sources. The data is refreshed from operational systems nightly to the public map. Wildfire data may not reflect the current fire situation, and therefore should only be used for reference purposes.  
 Wildfire data from the incident is updated when practicable and the occurrence of individual fire updates will vary. The information is intended for general purposes only and should not be relied on as accurate because fires are dynamic and circumstances may change quickly. The levels of current fire