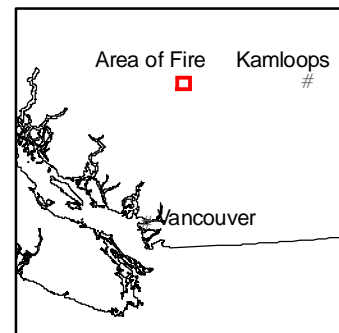


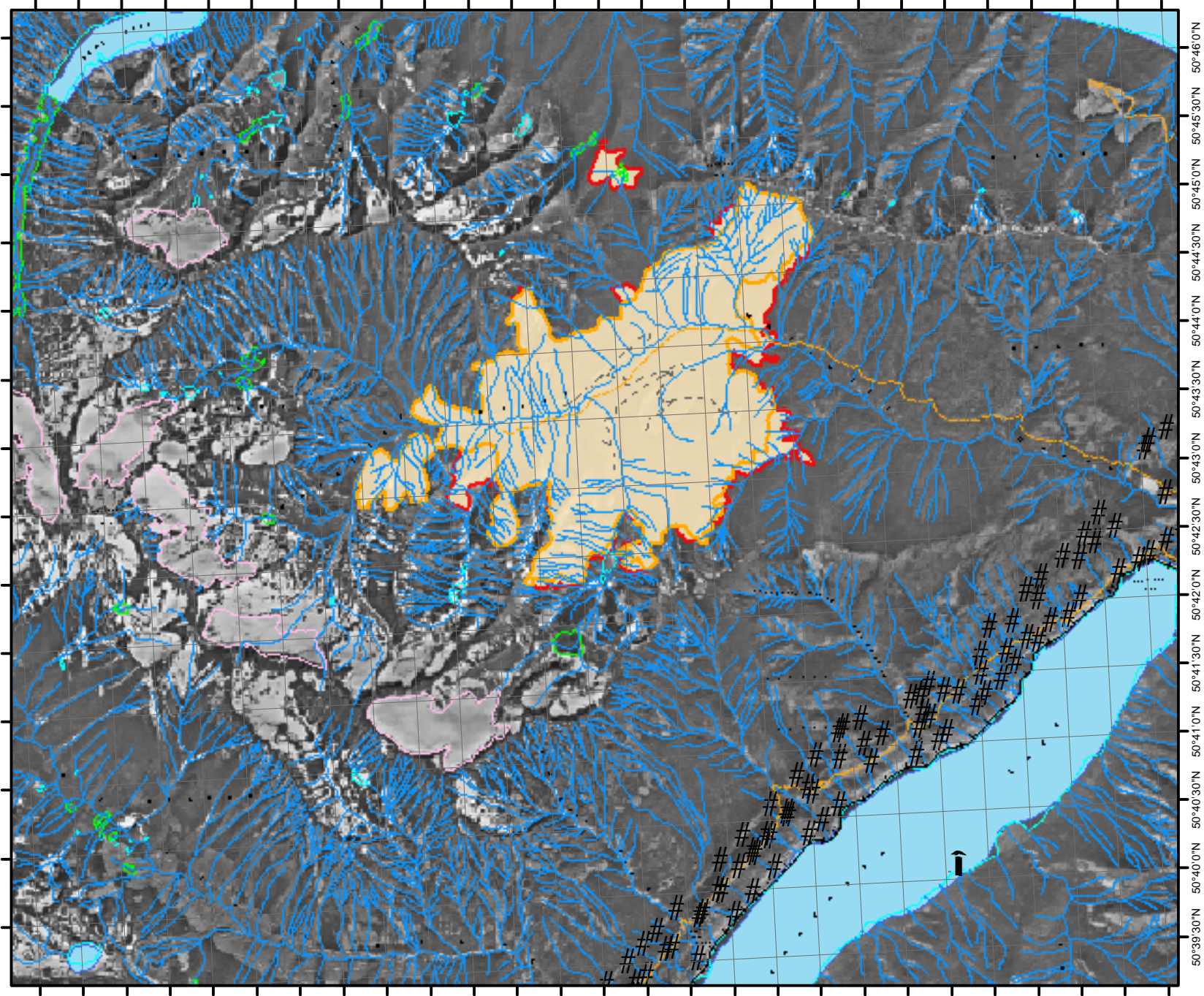
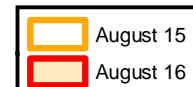
Fire Information: K70198

122°31'0"W 122°30'0"W 122°29'0"W 122°28'0"W 122°27'0"W 122°26'0"W 122°25'0"W 122°24'0"W 122°23'0"W 122°22'0"W 122°21'0"W 122°20'0"W 122°19'0"W 122°18'0"W



Fire perimeter - August 16, 0100
Fire size: 1540.1 ha
Fire perimeter: 40.2

Fire perimeter - August 15, 0700
Fire size: 1358.6 ha
Fire perimeter: 33.8



Cultural Points	Transportation Lines
Cultural Points	Airport
Transportation Points	Ferry Route
Airport	Road (Gravel)
Ferry Route	Road (Paved)
Helipoint	Road (Unimproved)
Water Points	Cut (Roadway)
Falls	Embankment/Fill (Roadway)
Rapids	Retaining Wall
Dam	Snow Shed (Railway)
Flooded Land - Inundated	Trail
Marsh	Bridge
Swamp	Tunnel
Breakwater	Rail Line (Multiple Track)
Sand/Gravel Bar	Light Rail Line
Flow Arrow	Rail Line (Single Track)
Arrowhead	Rail Line (Abandoned Track)
Island	Spur
Water Level	Built-Up Area
Sinkhole	Designated Areas
Cultural Lines	Parks and Protected Areas
Man-made Features	Major Watershed
Electrical Transmission Line	River/Stream
Pipeline	Flooded Land
Water Lines	Lake
Canal	Quarry
Dam	Reservoir
Beaver Dam	Marsh
Ditch	Island
Falls	Fuel Types
Flume	C-2
Rapids	C-3
Rivers	C-4
Spillway	C-7
Flooded Land (Inundated)	D-1
Lake	I
Reservoir	M-2
Marsh / Swamp	N
Glacier / Icefield	O-1b
Dyke/Levee	S-1
Island	S-2
Sand Bar	S-3
Sea Wall	U
Coastline	W
Contour Lines	
Index Contour	
Intermediate Contour	

