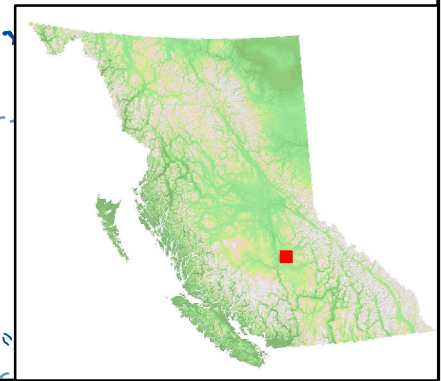
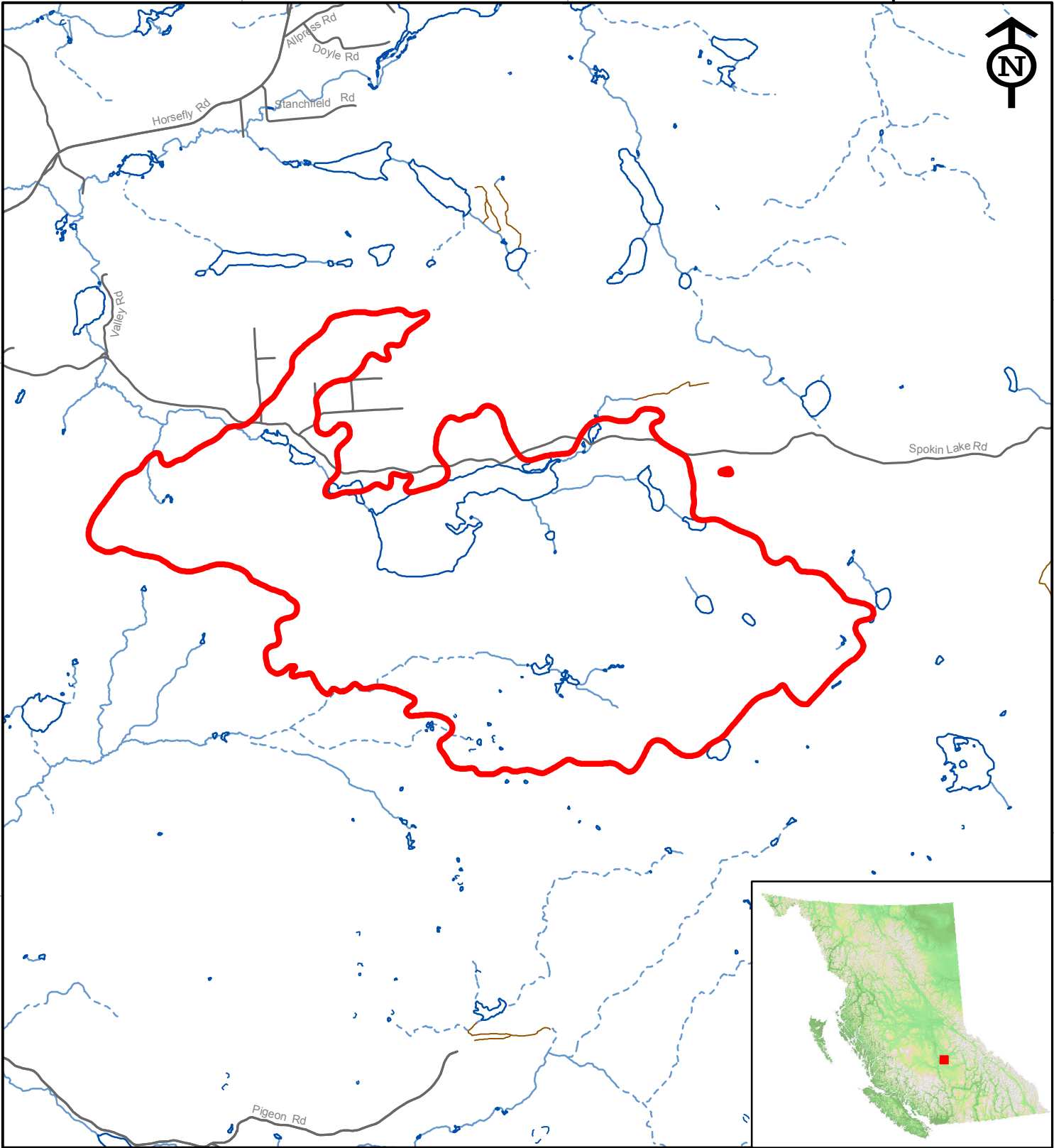


121°40'W



121°40'W

**Spokin Lake Rd
C20645
Public Information Map**

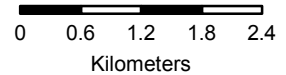
Perimeter Date: Aug 05, 2017
Fire Size: 3,387.4 Ha



BRITISH COLUMBIA
www.gov.bc.ca
Ministry of Forests, Lands & Natural Resource Operations
BC Wildfire Service

Disclaimer:
This map is intended for general public information only. Best efforts have been made to provide the most accurate fire information at the time of creation of this map. However, fires are dynamic, and the information shown on the map may no longer reflect the most current fire situation. Accordingly, this map only should be used for reference purposes.

 Fire Perimeter



1:75,000