



WILDFIRE UPDATE

Okanagan Complex

Mt. Eneas Wildfire (K51264)

Fire Size: 1793 hectares (estimated)

Status: Out of Control

Cause: Lightning-caused

Resources: 74 personnel, a night shift is assigned to this fire

Objectives: Small excursion on the north side was dealt with and tied back into the fire perimeter. Today's objectives are to continue to tie the merged fires with control lines, burn out any fuels as needed and mop up. Crews continue to build hose line from north and south flanks. Danger Tree Assessment and Falling will continue. Night shift will mop up and patrol around Garnet staging.

Evacuations: All Evacuation Orders have been downgraded to an Alert in Garnet Valley. BC Hydro has re-established electricity to the 350 homes. Central Okanagan Regional District (CORD) - For an interactive map of the affected areas, go to cordemergency.ca/map.

Area Restriction Order: For areas south of the Mt. Eneas wildfire, please contact Regional District of Okanagan-Similkameen for details.

For information about the order in place north of the fire, please contact the Central Okanagan Regional District. At 250-490-4225.



Peachland Creek (K51247)

Fire Size: 23 hectares

Status: Being Held

Cause: Lightning-caused

Resources: 15 personnel, 2 water tenders

Objectives: This fire is in very steep terrain. The ground is largely shale with a cliff adjacent to the worksite. DTA/DTF has been completed on all workable ground. Black line (guard) has been completed on the east flank, from north side working to south face and to top of slope. Building hand guard down the west flank, down the ravine, on to workable ground.

Evacuations: Evacuations Alerts are in effect. Details available online at and Central Okanagan Regional District (CORD) at 250-469-8490.

ADDITIONAL CONTACT INFORMATION:

Information Officers: Noelle Kekula or Shelley Zupp | 250-319-4815 or 250 320-1124



www.bcwildfire.ca



BC Forest Fire Info



@BCGovFireInfo



WILDFIRE UPDATE

Law Creek Wildfire (K51248)

Fire Size: 1793 hectares (estimated)

Status: Under Control

Cause: Lightning-caused

Resources: 28 personnel, 1 water tender, air support as needed

Objectives: Crews will continue to mop up 100 ft off of each side of hose lays that are going through the interior of the fire. Some smoke was found inside the black. Crews will continue to burn out additional fingers as necessary.

Evacuations: None

Goode's Creek (K51242)

Fire Size: 577 hectares

Status: Out of Control

Cause: Lightning-caused

Resources: 33 personnel, and air support as needed

Objectives: Crews will work on establishing water delivery. Crews are working in the area and running operations from the lake to hill, as well as mopping up. On the east side of the fire, crews are working on the southeast flank building guard.

Evacuations: None

Other: No homes or infrastructure are currently threatened.

Mount Conkle (K51243)

Fire Size: 118 hectares

Status: Being Held

Cause: Lightning-caused

Resources: 32 personnel, 1 water tender and air support as needed

Objectives: Crews will continue to extend hose lays and mop up perimeter to 100 feet. DTA/DTF continues. This fire has lots of fingers and bays that crews are dealing with.

Evacuations: None

Other: This fire experienced an isolated shower yesterday.



Glenfir Fire (K51256)

ADDITIONAL CONTACT INFORMATION:

Information Officers: Noelle Kekula or Shelley Zupp | 250-319-4815 or 250 320-1124



www.bcwildfire.ca



BC Forest Fire Info



@BCGovFireInfo



WILDFIRE UPDATE

Additional Information:

The fire that was originally named Paradise Ranch fire (K51344) has been renamed Frederick Creek fire to better reflect the location of the fire. The fire is burning less than Rank 1 which is a smoking, ground fire.

Glenfir Fire (K51256) - this fire is burning on rocky ground but burned into a drainage and has produced a visible column of smoke. Crews are onsite and actively working on this incident and support from aircraft is available as needed.

Chance of Lightning or Dry Lightning for today is 0%.

Crews are patrolling areas where lightning strikes occurred last evening.

9 aircraft are assigned to this complex with more available when and as needed.

260 personnel are currently assigned to this Complex.



Glenfir Fire (K51256)

Fire Status

Status	Definition of New Stage of Control
Out of Control	Describes a wildfire that is not responding (or only responding on a limited basis) to suppression action, such that the perimeter spread is not being contained.
Being Held	Indicates that (with the resources currently committed to the fire) sufficient suppression action has been taken that the fire is not likely to spread beyond existing or predetermined boundaries under the prevailing and forecasted conditions.
Under Control	The fire has received sufficient suppression action to ensure no further spread of the fire.
Out	The fire has been extinguished.

ADDITIONAL CONTACT INFORMATION:

Information Officers: Noelle Kekula or Shelley Zupp | 250-319-4815 or 250 320-1124



www.bcwildfire.ca



BC Forest Fire Info

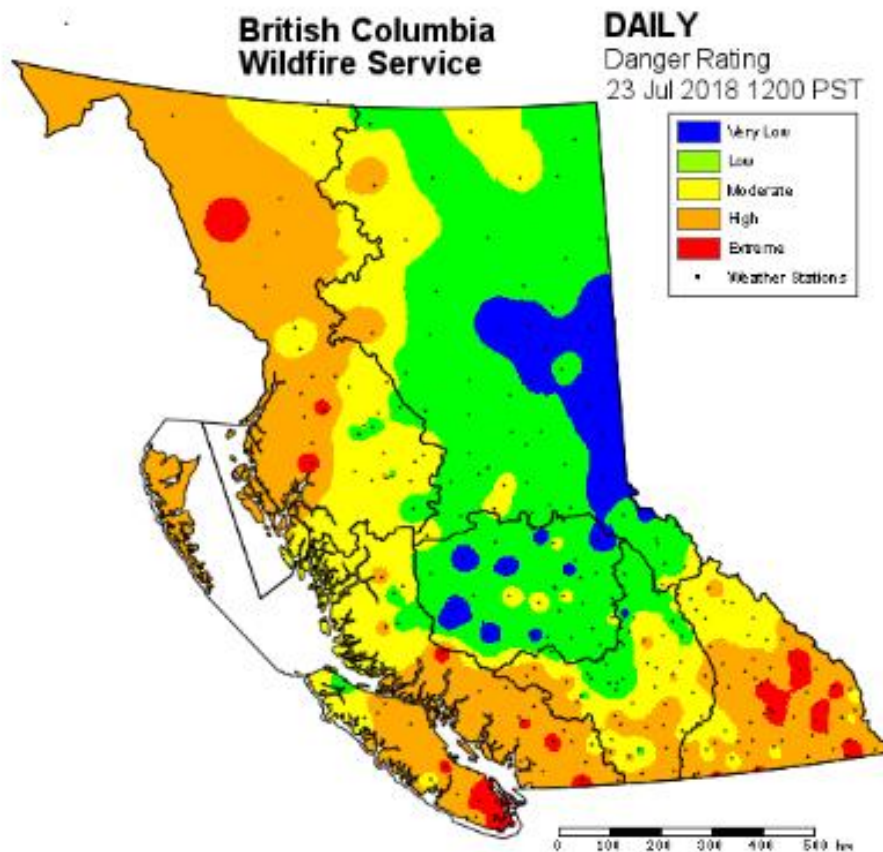


@BCGovFireInfo



WILDFIRE UPDATE

Fire Danger Rating:



Spot a wildfire, smoke or illegal fire activity?

Call 1-800-663-5555 or *5555 on your cell phone

HELPFUL RESOURCES:

Drifting Smoke: www.bcairquality.ca/bluesky/west/index.html

Smoke Health Concerns: HealthLink BC | dial 8-1-1 | www.healthlinkbc.ca/kbaltindex.asp