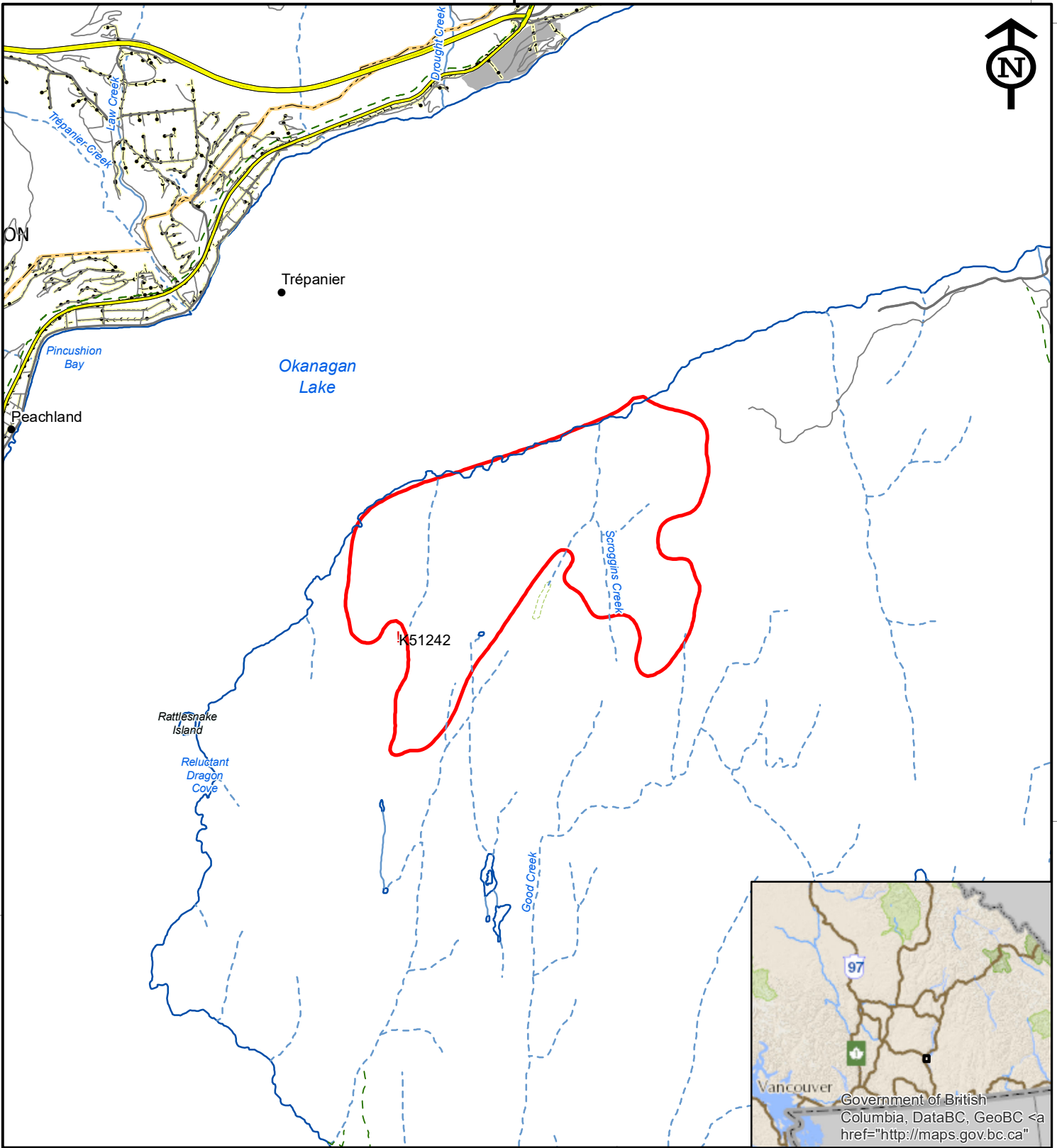


119°40'W



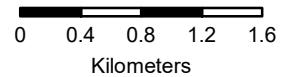
Government of British Columbia, DataBC, GeoBC

119°40'W

Goode's Creek K51242 Public Information Map



Ministry of
Forests, Lands, Natural
Resource Operations
and Rural Development
BC Wildfire Service



1:50,000

Perimeter Date: July 21, 2018

Fire Size: 577.2 ha

Disclaimer:
Wildfire perimeters for the current fire season, including both active and inactive fires, are supplied from various sources. The data is refreshed from operational systems nightly to the public map. Wildfire data may not reflect the current fire situation, and therefore should only be used for reference purposes.
Wildfire data from the incident is updated when practicable and the occurrence of individual fire updates will vary. The information is intended for general purposes only and should not be relied on as accurate because fires are dynamic and circumstances may change quickly. The levels of current fire