

120°30'W 120°20'W 120°10'W 120°0'W 119°50'W 119°40'W

56°40'N

56°30'N





56°40'N

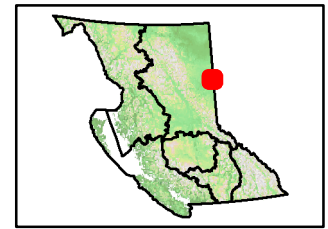
56°30'N

56°20'N



Siphon Creek Fire G80068 Public Information Map

-  Fire Perimeter
-  Indian Reserves
-  BC Parks, Protected Areas, Eco Reserves
-  Conservation Lands
-  Private Land
-  Crown Municipal

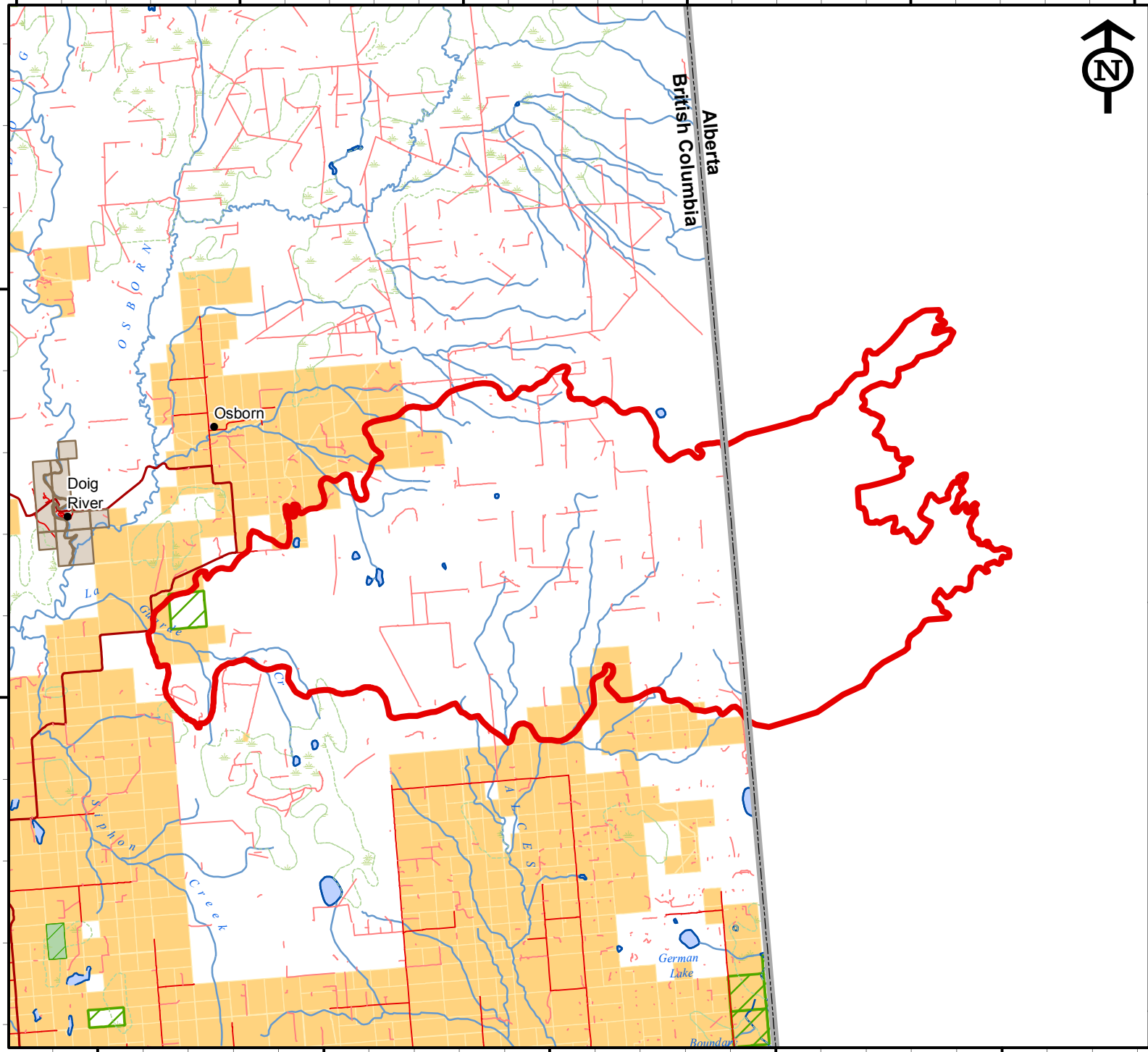


Disclaimer:
This map is intended for general public information only. Best efforts have been made to provide the most accurate fire information at the time of creation of this map. However, fires are dynamic, and the information shown on the map may no longer reflect the most current fire situation. Accordingly, this map only should be used for reference purposes.



Kilometers
1:250,000

Filename: G80068_PublicInfo_8.5x11L_2
 Projection: NAD 1983 BC Environment Albers
 Datum: North American 1983
 Date/Time Created/Revised: May 07, 2016 1847



120°30'W 120°20'W 120°10'W 120°0'W 119°50'W 119°40'W