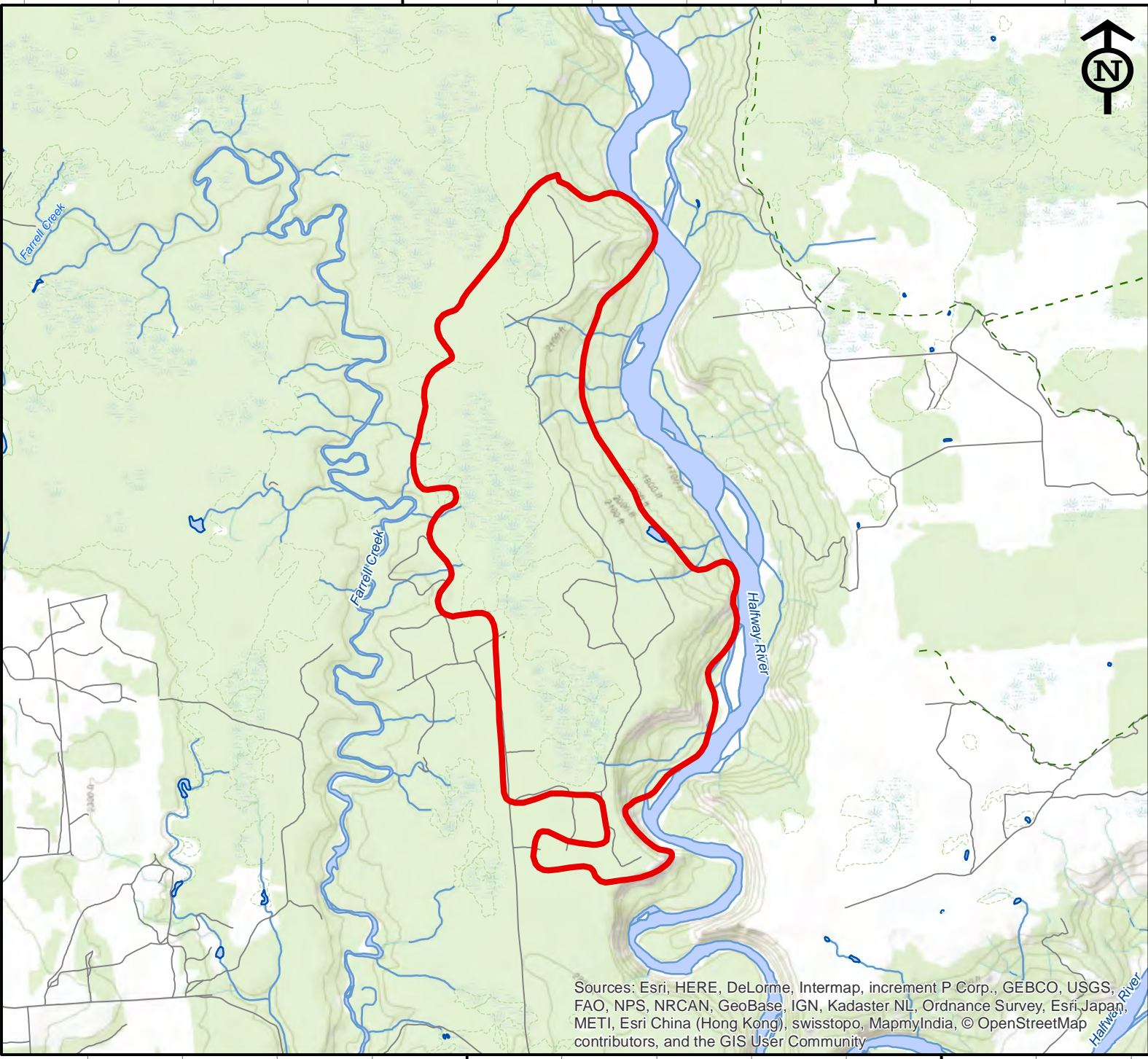


121°40'W

121°35'W

56°20'N

56°20'N



56°15'N






56°15'N

121°40'W

121°35'W

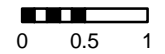
Banks of Halfway River G80074 Public Information

Perimeter Date: May 9, 2016
Perimeter Area: ~ 1,434 Ha

-  Fire Perimeter
-  Road
-  Lake
-  River or Stream
-  Wetland



Disclaimer:
This map is intended for general public information only. Best efforts have been made to provide the most accurate fire information at the time of creation of this map. However, fires are dynamic, and the information shown on the map may no longer reflect the most current fire situation. Accordingly, this map only should be used for reference purposes.



Kilometers
1:60,000

Filename: G80074_PublicInfo_8.5x11L
Projection: NAD 1983 BC
Environment Albers
Datum: North American 1983
Date/Time Created/Revised: May 10, 2016 1007
Created by: wessmith

Sources: Esri, HERE, DeLorme, Intermap, increment P Corp., GEBCO, USGS, FAO, NPS, NRCAN, GeoBase, IGN, Kadaster NL, Ordnance Survey, Esri Japan, METI, Esri China (Hong Kong), swisstopo, MapmyIndia, © OpenStreetMap contributors, and the GIS User Community

