

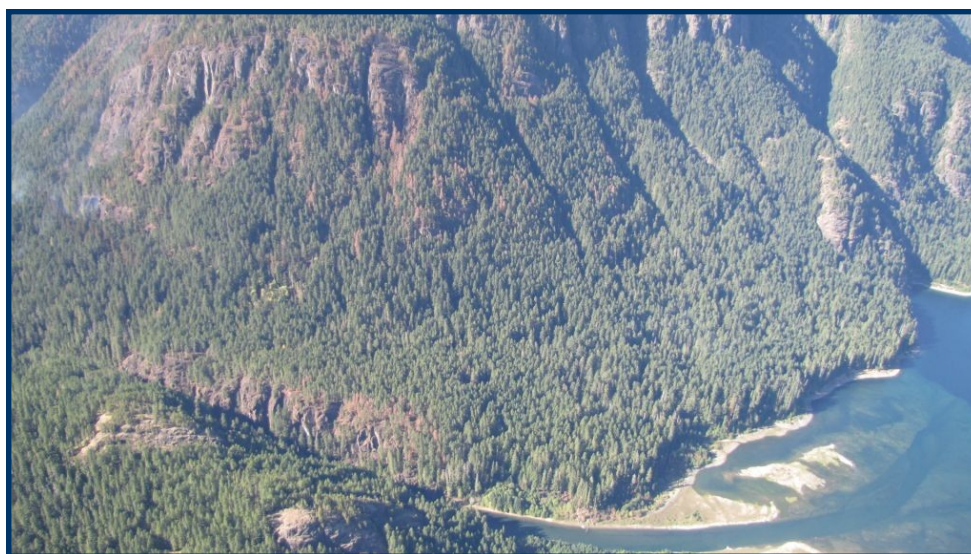


Coastal Wildfire Bulletin

October 4, 2012

V80481 Wolf River Drainage / Strathcona Park

A fire located within the Wolf River drainage adjacent to Buttle Lake in Strathconal Park has had relatively quiet fire behaviour in the last week. The fire periodically produces smoke, which may be visible from Buttle Lake and the Western Mine road, and smoke may drift as far as Campbell River. The fire is now mapped at 313 hectares in size, and was caused by lightning in the area on August 18 and 19.



This fire is burning in steep and rocky ground, in terrain that is not safe for wildfire crews to work. The fire is being managed in cooperation with BC Parks, and continues to meet the land manager's ecological objectives. The majority of the fire

impacts have been to surface fuels and the forest understory.

The wildfire management strategy, tactics and potential fire behaviour are being assessed as required. A fire management plan was developed in partnership with BC Parks, and the fire has stayed well within trigger points.

The fire does not presently pose any safety concerns or restrictions to park users. The fire has, and will, produce visible smoke especially if it burns actively in the afternoon. This fire is expected to continue to burn for the foreseeable future, as weather forecasts are predicting continued unseasonably dry conditions in the area for the next few weeks.

Smoke emissions have not impacted Highway 28 or Strathcona Park. The public should be aware of the potential danger of debris rolling down the slope from the wildfire activity and are asked to avoid this area.

For further information, please call:

North Island / Mid Coast Fire Zone at 250-286-7560