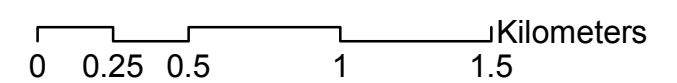
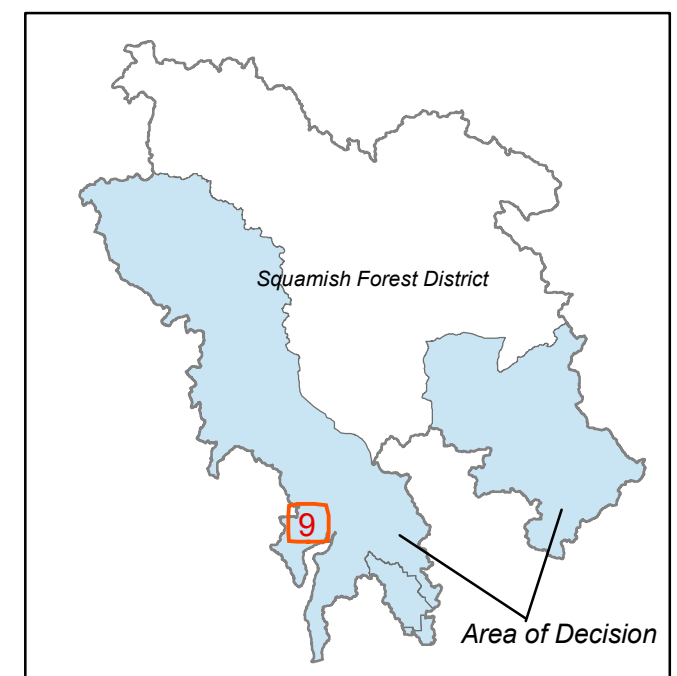
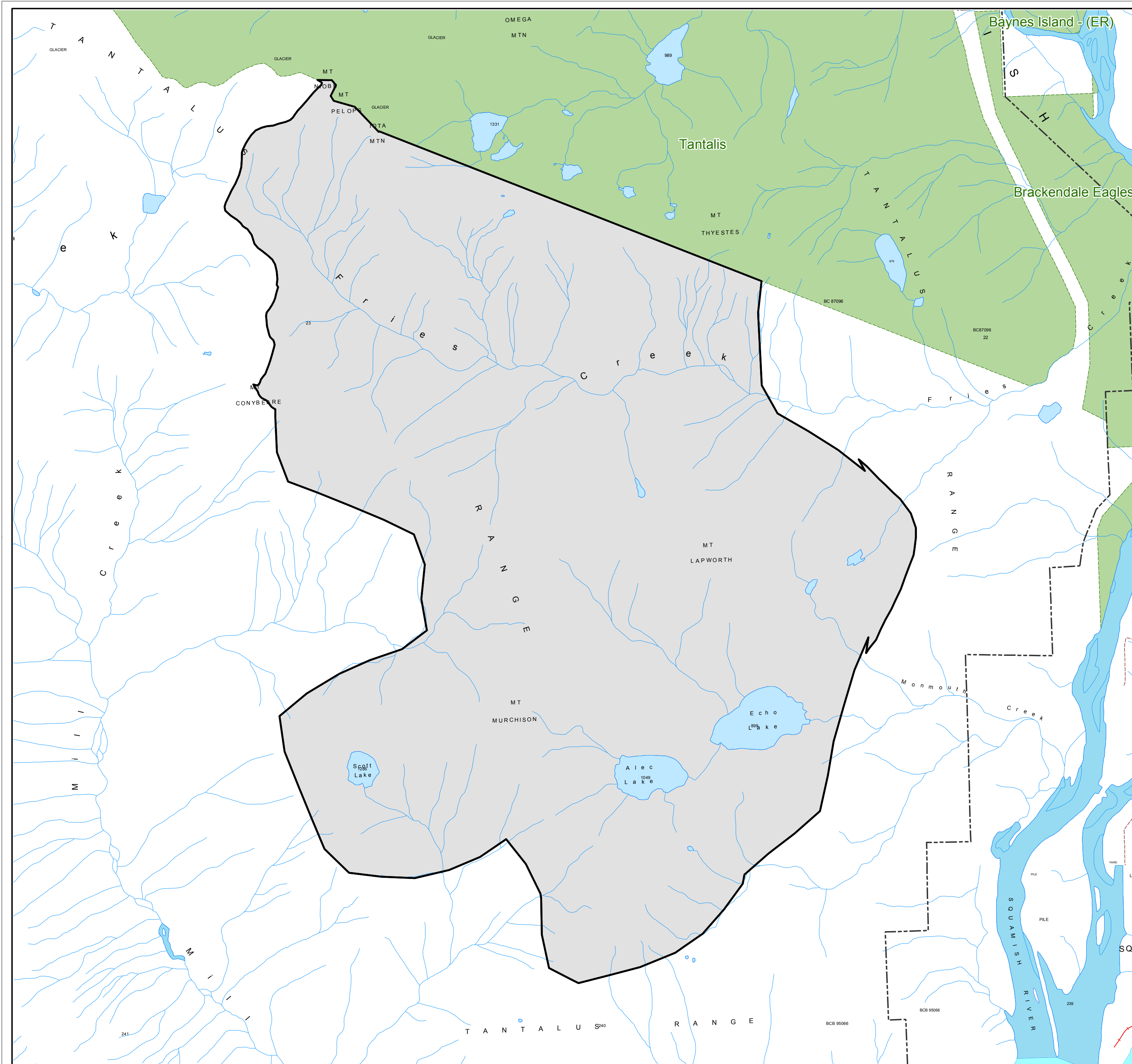


# Sea-to-Sky LRMP Designated Area Schedule 9 of 17

*Fries Creek - Echo Lake*

 Sea-to-Sky LRMP  
Designated Area



1:25,000

Map produced on March 30, 2007  
Map Layout: GS  
Integrated Land Management Bureau  
Lower Mainland Service Centre

Projection: Albers Datum: Nad 83  
Data Source: ILMB Data Warehouse

Filename: S2S\_PHASE1\_PT13\_20070901

Filepath: \$PROJLIB/rmd/s2s/g2g/lrmp\_wide/part13

Ratio Scale correct at 17" x 22" pagesize