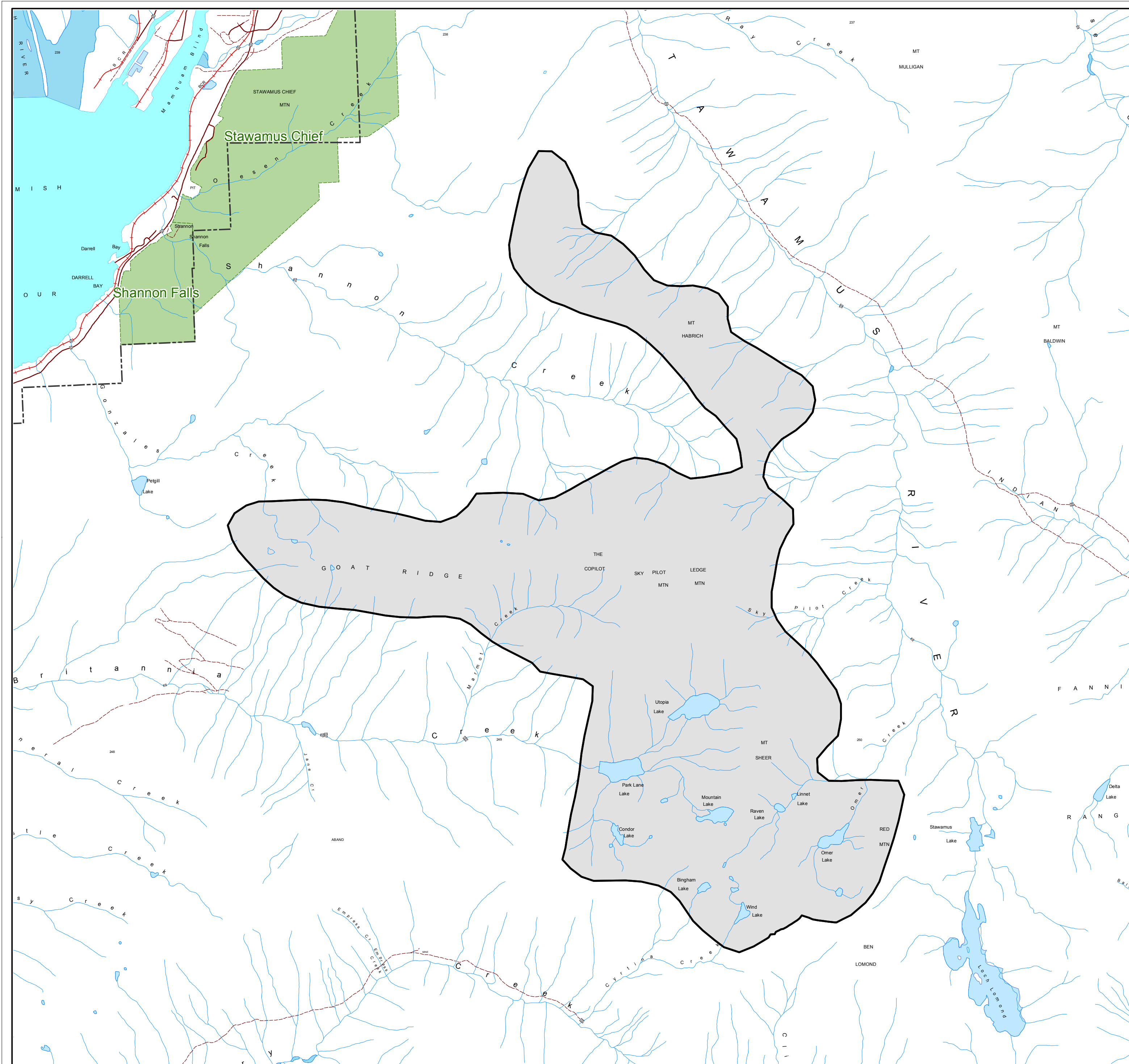
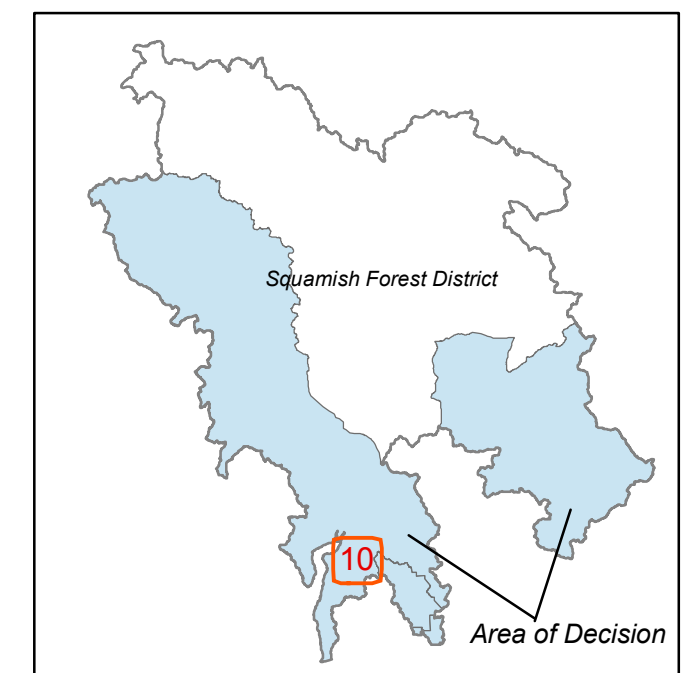


Sea-to-Sky LRMP Designated Area Schedule 10 of 17

Sky Pilot Mountain

 Sea-to-Sky LRMP
Designated Area



0 0.25 0.5 1 1.5 Kilometers

1:30,000

Map produced on March 30, 2007
Map Layout: GS
Integrated Land Management Bureau
Lower Mainland Service Centre

Projection: Albers Datum: Nad 83
Data Source: ILMB Data Warehouse

Filename: S2S_PHASE1_PT13_20070901

Filepath: \$PROJLIB/rmd/s2s/g2g/lrmp_wide/part13

Ratio Scale correct at 17" x 22" pagesize

Sky Pilot Mountain