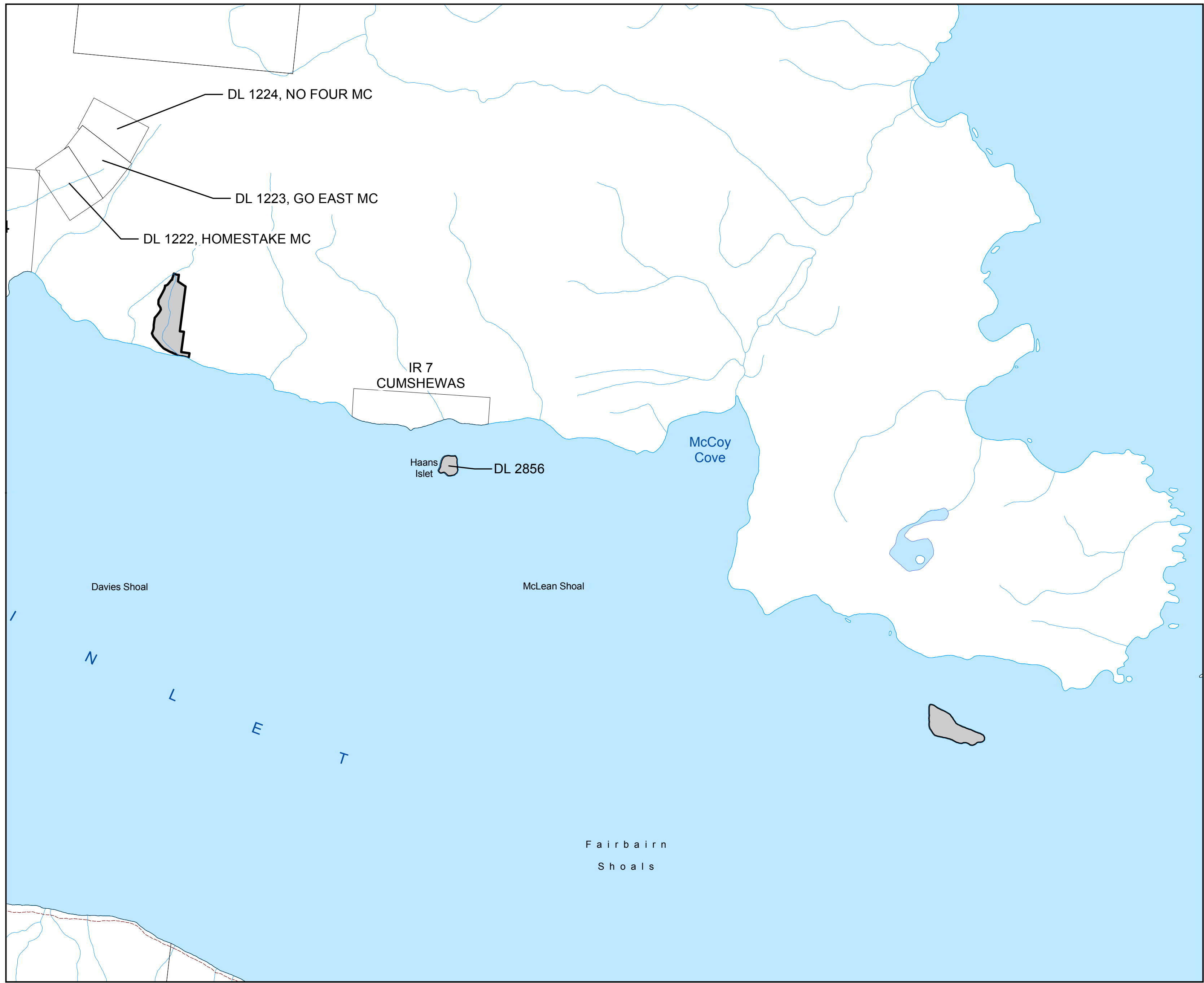


Haida Gwaii / Queen Charlotte Islands Designated Area No. 4

Schedule 16 of 19 - East Coast - Cumshewa Inlet Islands

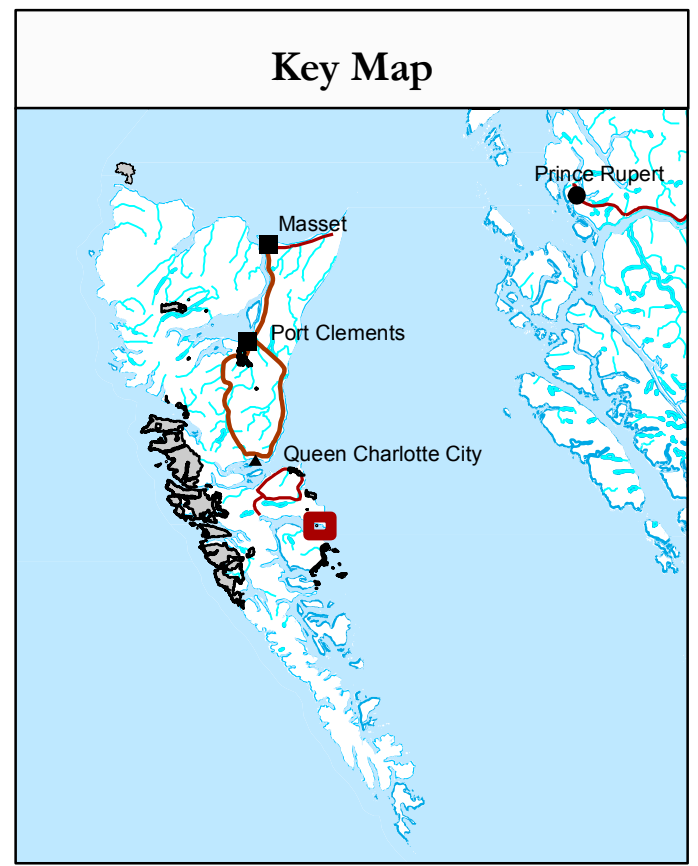


Legend

Haida Gwaii / Queen Charlotte Islands Designated Area No. 4

1:20,000

0 0.3 0.6 0.9 1.2
Kilometers



Produced by: Integrated Land Management Bureau

Filename: QCI_PT13_NO4_20080508_16

Filepath: Projects_2008\Misc\Part13\QCI_PT13_NO4_20080508_16.mxd

Projection/Datum: Albers/NAD83

Date Created/Revised: May 14, 2008

Created by: LIM Nan, SB

Ratio scale correct at 17" X 22" pagesize