

## Unknown 'green globs'

---

### Tips

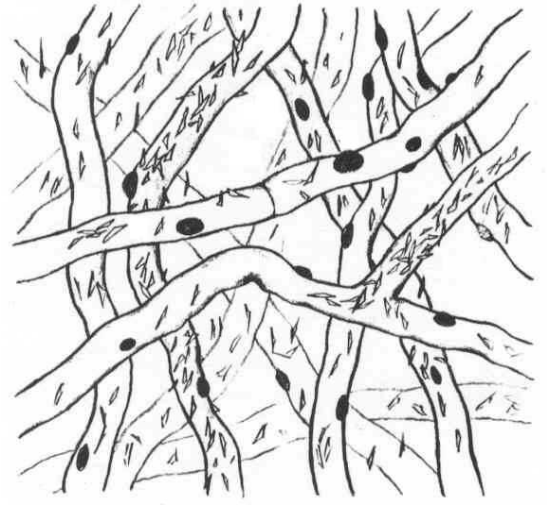
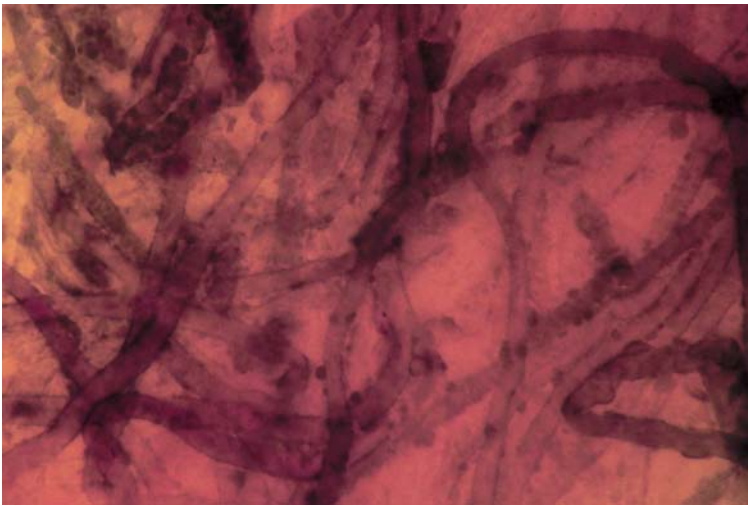
Usually single tips, sometimes branched, straight to slightly bent. White in colour, with stringy, matt texture, and host visible through the mantle. Flat angle mycelial strands and emanating hyphae common.



---

### Outer mantle

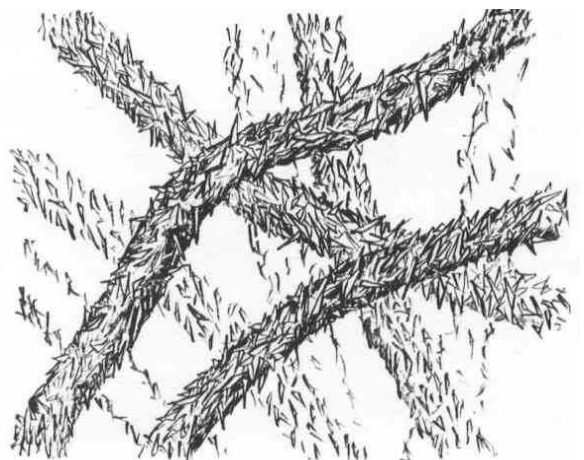
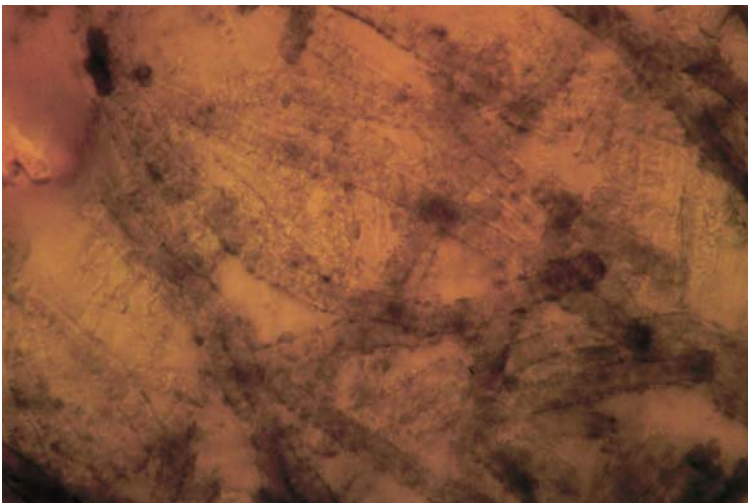
Felt prosenchyma, cell width 4  $\mu\text{m}$ , with slight crystalline ornamentation and green globular bodies on outer cell wall. Hyphal junctions common, with no clamps nor anastomoses.



---

### Inner mantle

Felt prosenchyma, width 4  $\mu\text{m}$ , strong crystalline ornamentation, no clamps, some H-shaped anastomoses without clamps.



---

### Mycelial strands

Loose-undifferentiated, hyphae width 4  $\mu\text{m}$ , some globular and crystalline ornamentation. No clamps, and H-shaped anastomoses without clamps present.

---

### Emanating hyphae

Emanating hyphae common, cell width 4  $\mu\text{m}$ , with green globular ornamentation and rarer crystalline ornamentation. No clamps, and H-shaped anastomoses without clamps present.

---