

Unknown 'glass shards'

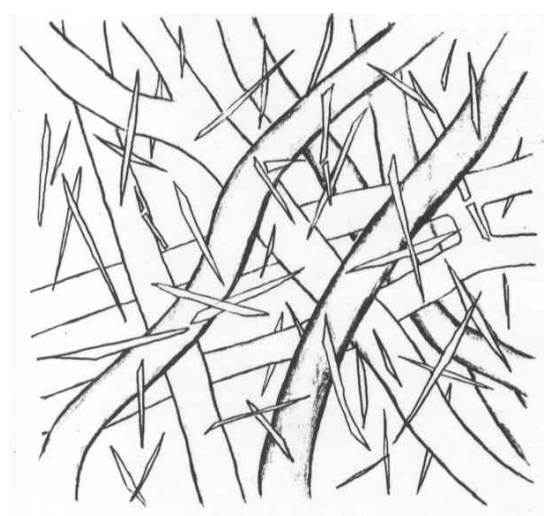
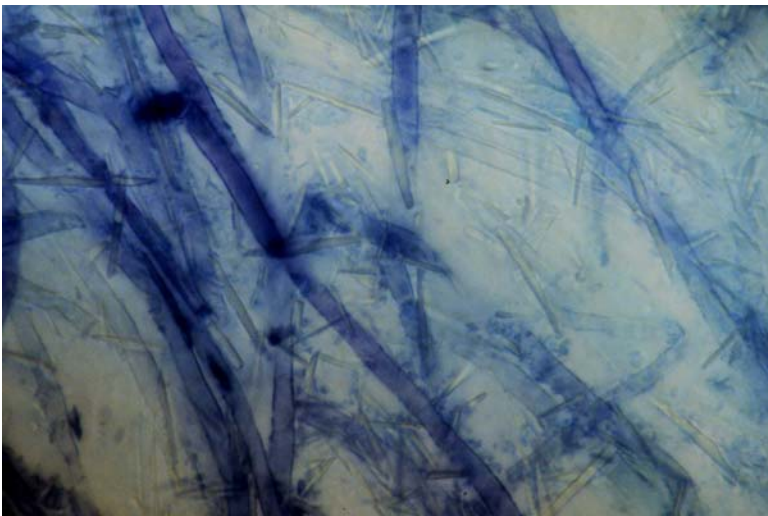
Tips

Irregularly branched root systems, with bent tips. White in colour, with stringy texture, and generally no host visibility. Restricted point mycelial strands and emanating hyphae are common.



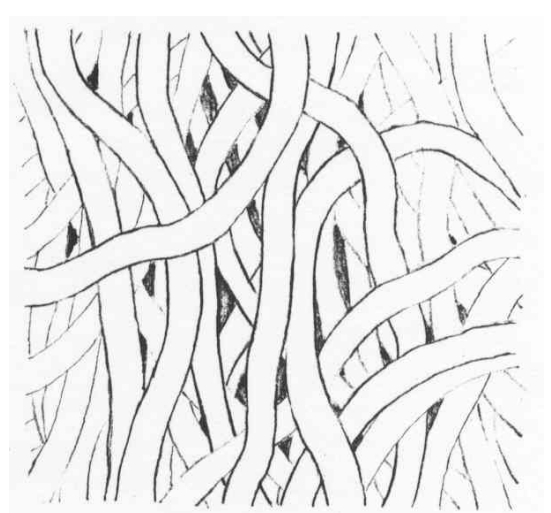
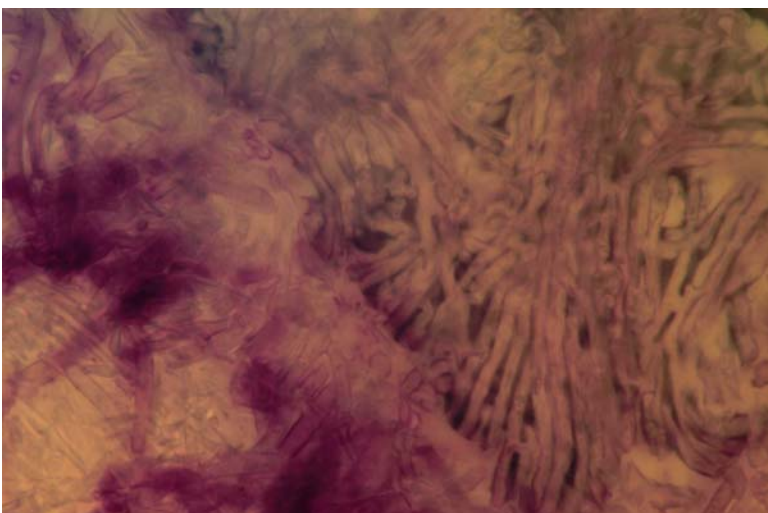
Outer mantle

Felt prosenchyma, cells 2-3 μm wide, with abundant, large crystalline ornamentation (15-25 μm long). Few hyphal junctions, no clamps, and some H-shaped anastomoses without clamps present.



Inner mantle

Usually difficult to see because of the thick outer mantle, the inner mantle is a net prosenchyma to net synenchyma, with cells 2-3 μm wide. No clamps nor ornamentation.



Mycelial strands

Loose undifferentiated strands, with no ornamentation and no clamps.

Emanating hyphae

Emanating hyphae common, with similar crystalline ornamentation but less frequent than mantle. Stains pink in toluidine blue, hyphae often twisted, hyphal junctions common. Some H-shaped anastomoses without clamps present.
