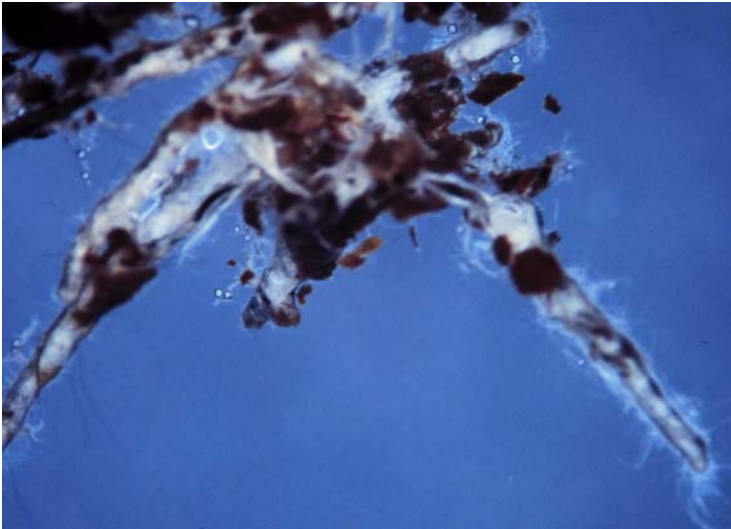


## Tricholoma virgatum

---

### Tips

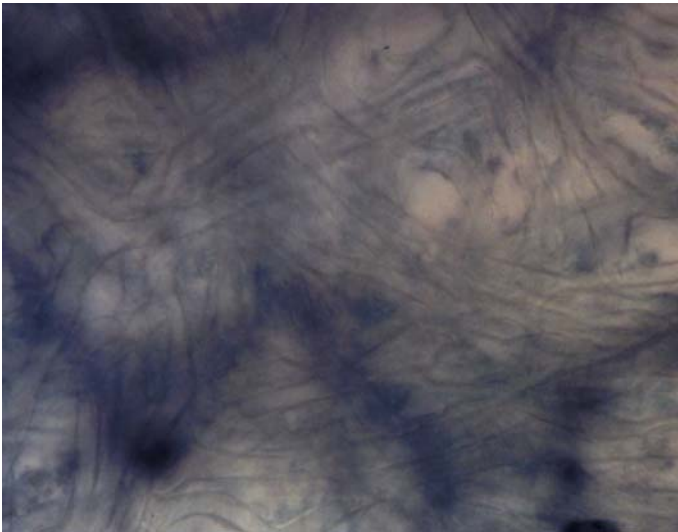
Monopodial pinnate tips, often bent, generally large colonies. Young tips white and stringy, becoming black and 'carbonized' with age. Flat angle mycelial strands and emanating hyphae common.



---

### Outer mantle

Net synenchyma, cell width 3  $\mu\text{m}$ . No contents, no ornamentation nor clamps. Few septas and hyphal junctions. Mantle has some gaps and swirl patterns, with bands of parallel hyphae.



---

### Mycelial strands

Loose-undifferentiated, hyphae width 4-5  $\mu\text{m}$ , no ornamentation nor clamps. Septa frequent and usually pinched in, few hyphal junctions.

---

### Emanating hyphae

Common, cell width 5 (4-7)  $\mu\text{m}$ , no ornamentation, although lots of debris. No clamps, few hyphal junctions, septa pinched in and hyphae often folded, some round ends apparent.

