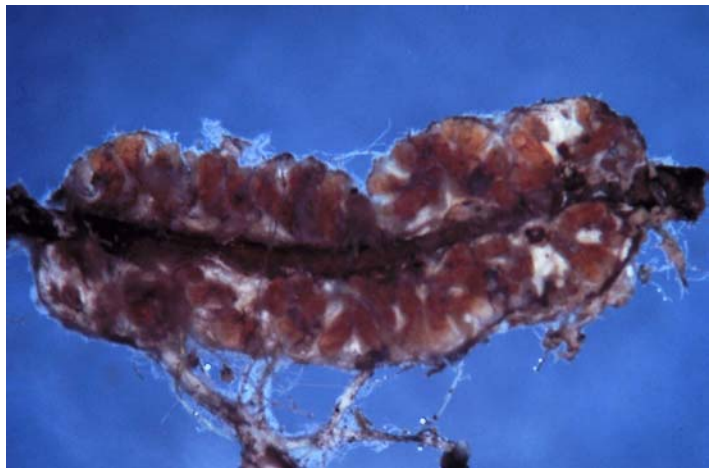
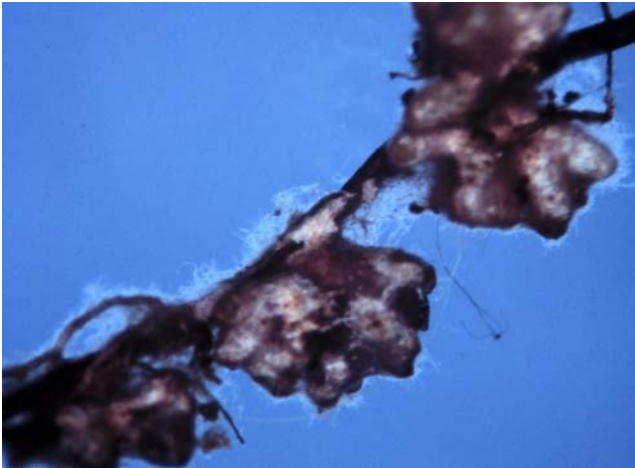


Suillus tomentosus

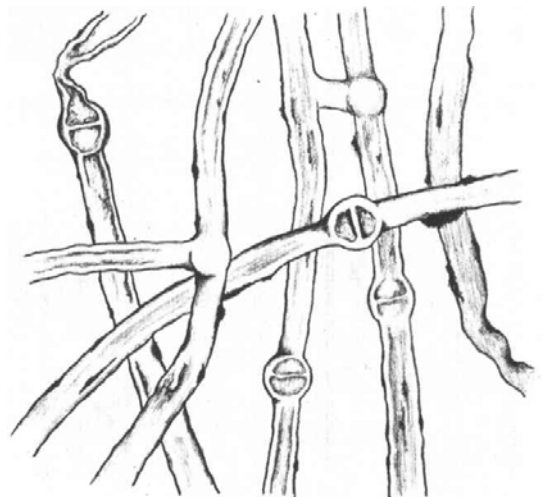
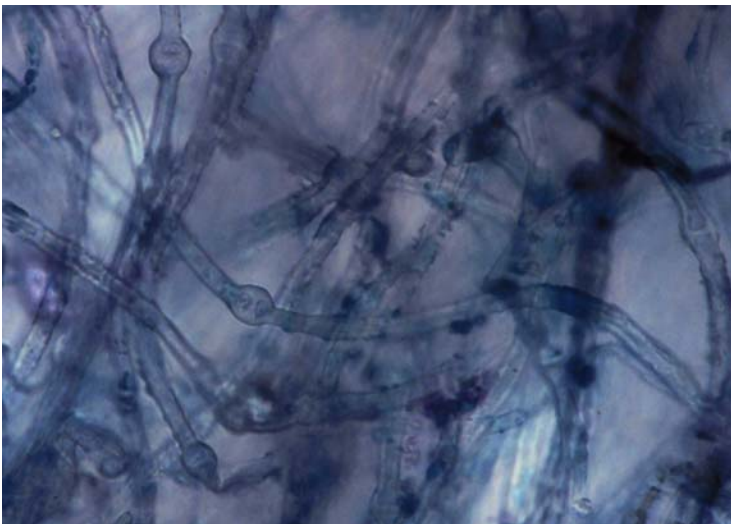
Tips

Root systems form tuberculates, filled with tortuous-shaped root tips. The fungi encasing the roottips are white, often with vinaceous tinges, and stringy in texture. A few flat angle mycelial strands are present.



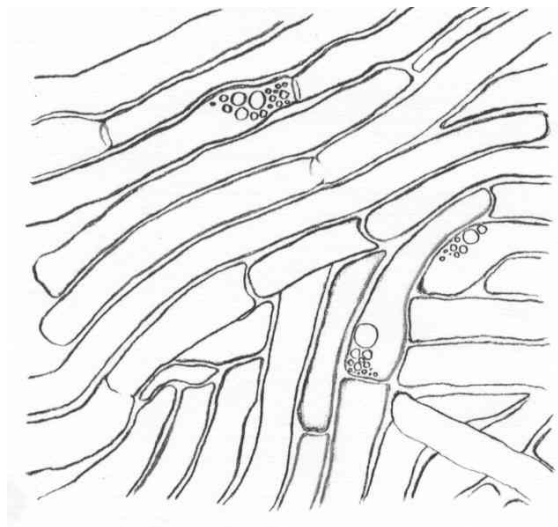
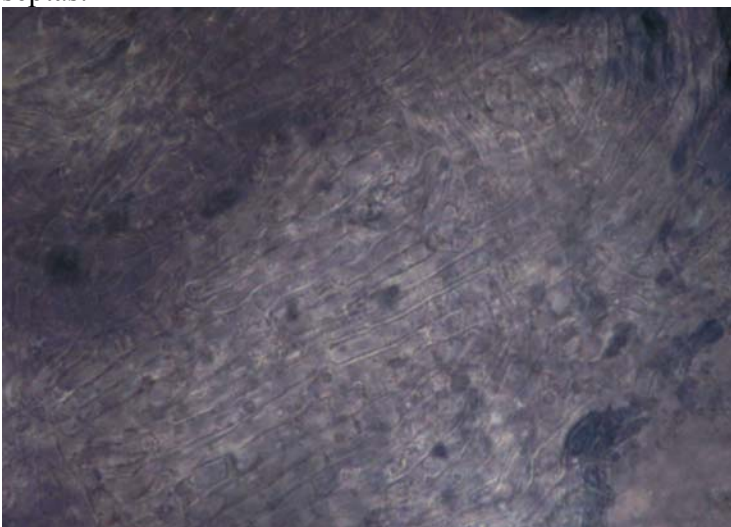
Outer mantle

Felt prosenchyma, cell width 4 μm wide (3-5 μm). Covered with encrusted crystals (oxalate?) that stain purple with toluidine blue. Contents are clear, with no clamps, and few enlarged septa are present. Hyphae are often bent or twisted, and H-shaped anastomoses are present.



Inner mantle

A net synenchyma, with cells 3 μm wide, often aligned in parallel, and generally does not stain well. No ornamentation, but some oil bodies. Some portions of the hyphae are swollen, with no clamps, and few septas.



Mycelial strands

Strands are smooth, undifferentiated, with encrusted or crystalline ornamentation, cells 3 μm wide. Contents are clear, with no clamps, and enlarged septa are common.
