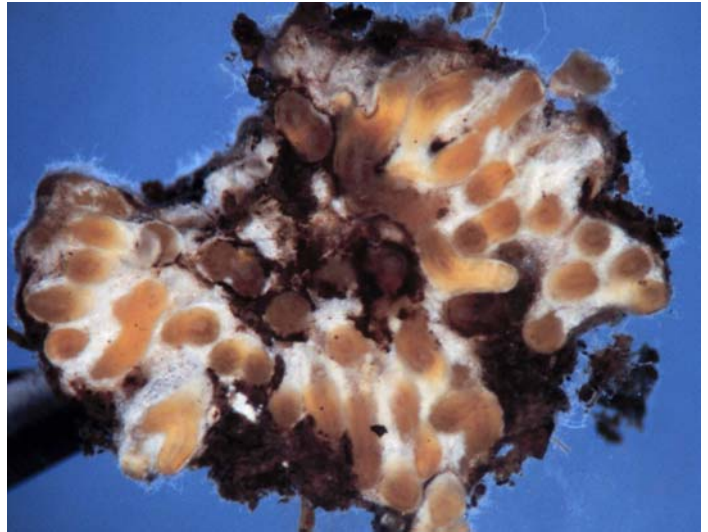
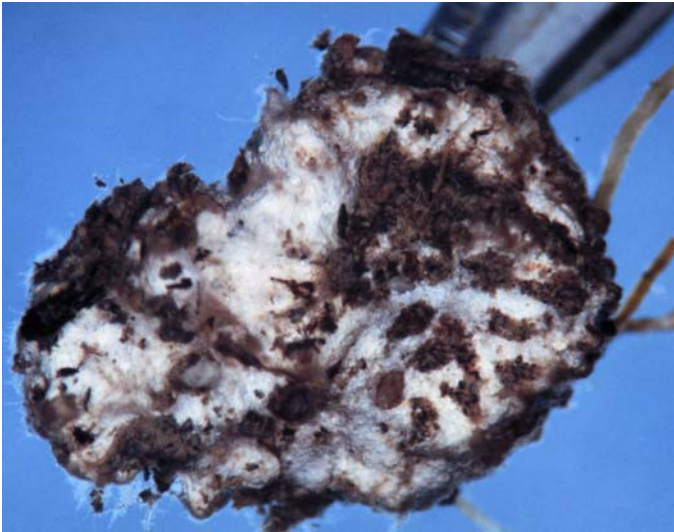


Suillus brevipes

Tips

Tuberculate systems, filled with tortuous-shaped root tips. The fungi encasing the root tips are silvery white, often with vinaceous tinges, and stringy in texture. Few restricted point mycelial strands present.

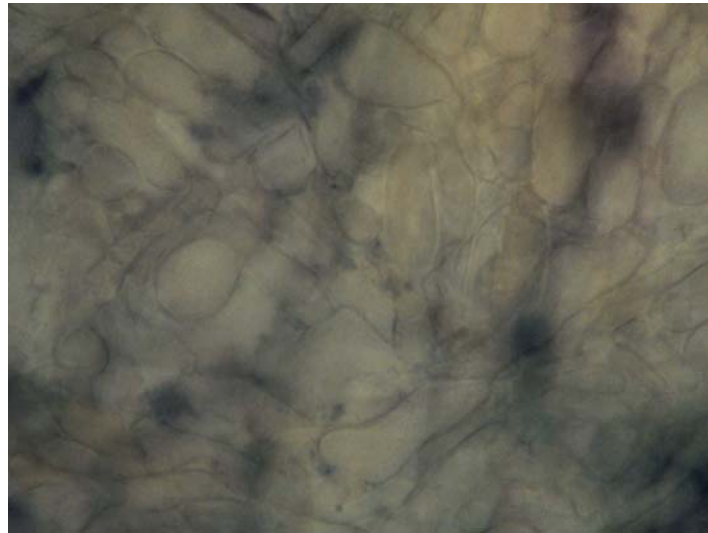
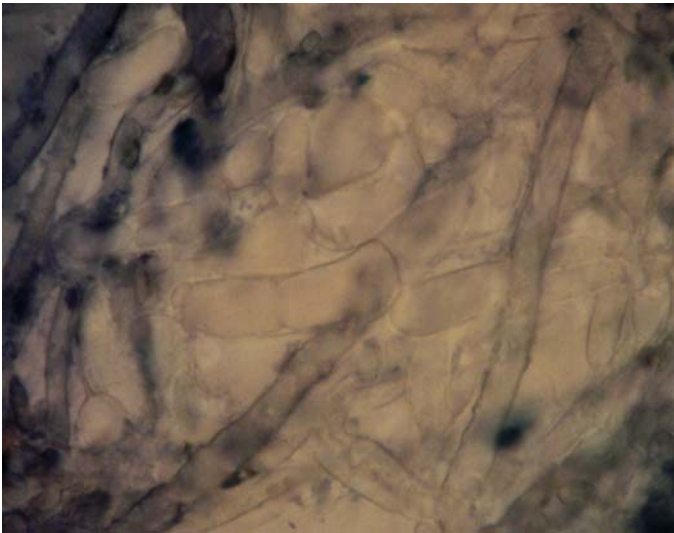


Outer mantle

Net synenchyma, cell width 5 μm . Covered with encrusted crystals (oxalate?) that stain purple with toluidine blue. Contents are clear, with no clamps, and few enlarged septa are present. Hyphae often twisted.

Inner mantle

A net synenchyma to non-interlocking irregular synenchyma, with linear cells (3-5 μm wide) and more round cells (10-20 μm wide). No ornamentation, no clamps, and few septas that are slightly pinched in.



Mycelial strands

Strands are smooth, undifferentiated, with crystalline ornamentation, cells 2 (3) μm wide. Contents are clear, with no clamps, and enlarged septa (6 μm wide) are common.

