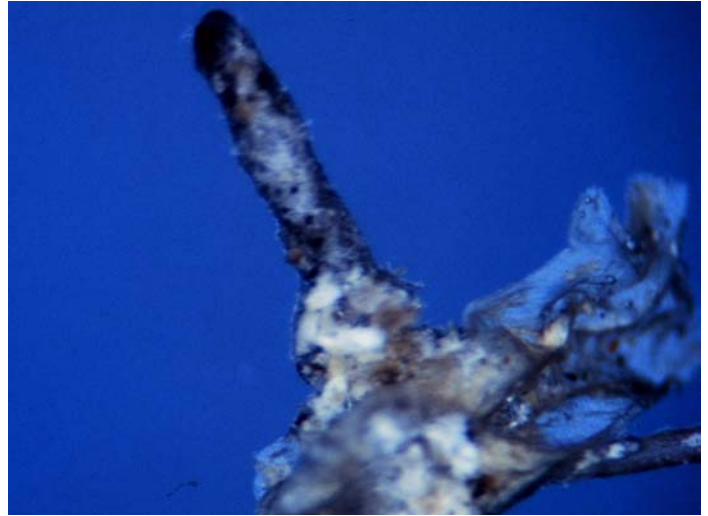
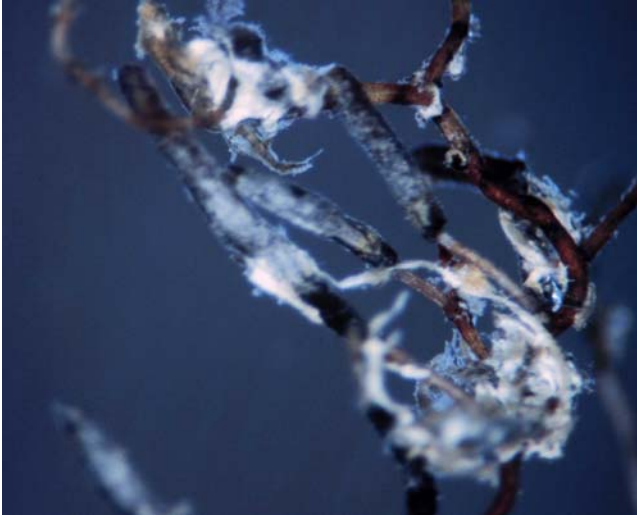


Sarcodon imbricatus

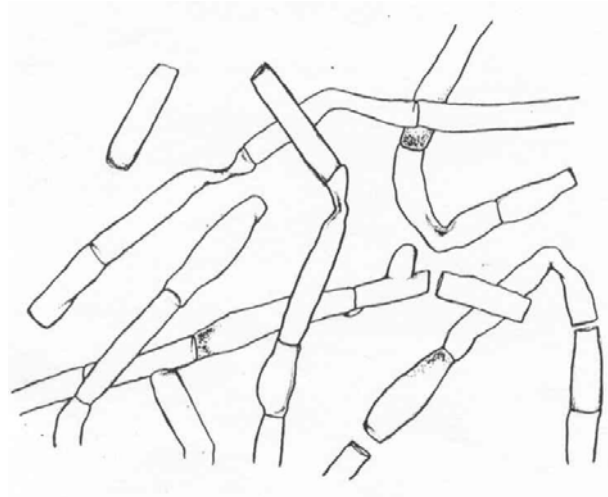
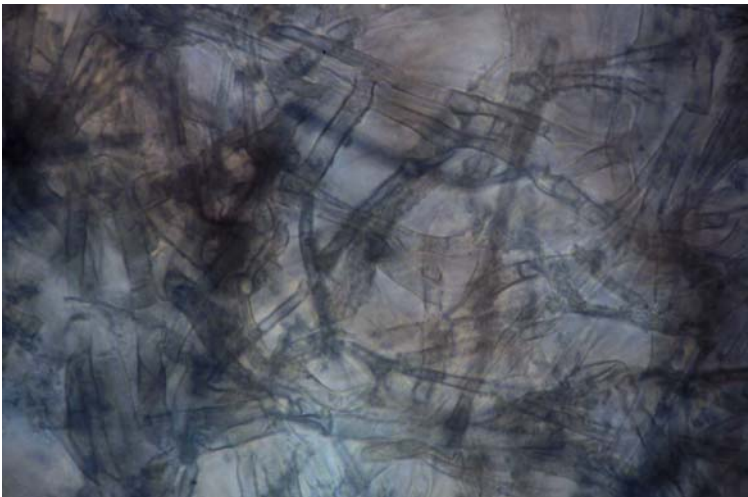
Tips

Monopodial pinnate root systems, with straight or sometimes bent tips. Young tips whitey-grey, becoming quite black ('carbonized') at the base. Emanating hyphae common. Large nest-like colony, with a lot of felty debris stuck amongst the tips.



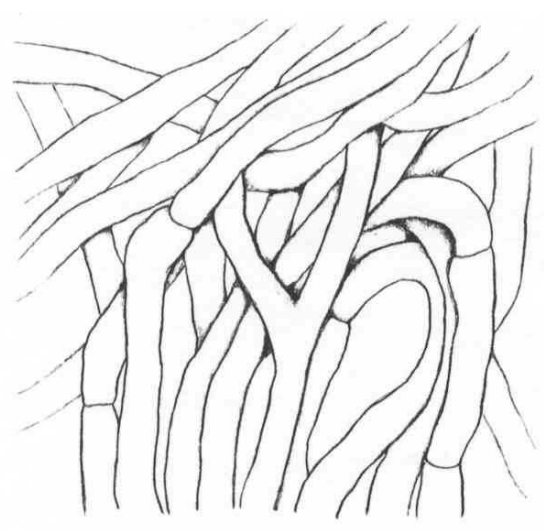
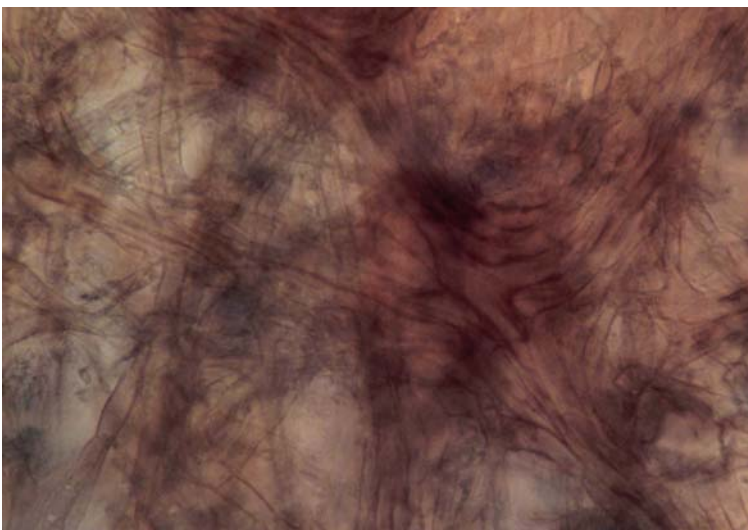
Outer mantle

Net prosenchyma, cells 3 μm wide, with occasional globular ornamentation and few clamps. Enlarged hyphal junctions common, as are H-shaped anastomoses with clamps.



Inner mantle

Net synenchyma, cells 4 μm wide, brown in colour, with no clamps nor ornamentation. The inner synenchyma is not always continuous.



Emanating hyphae

Common, 3 μm wide, with no ornamentation and no clamps. Cells are distinctly 'broken off', which appears to be the natural shape of the hyphae.
