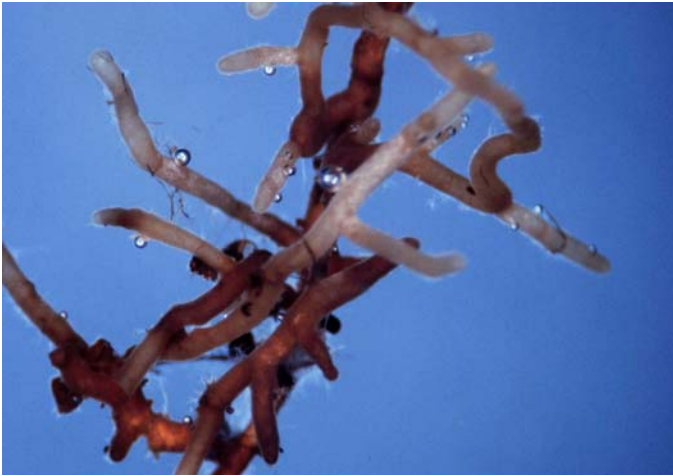


Russula xerampelina

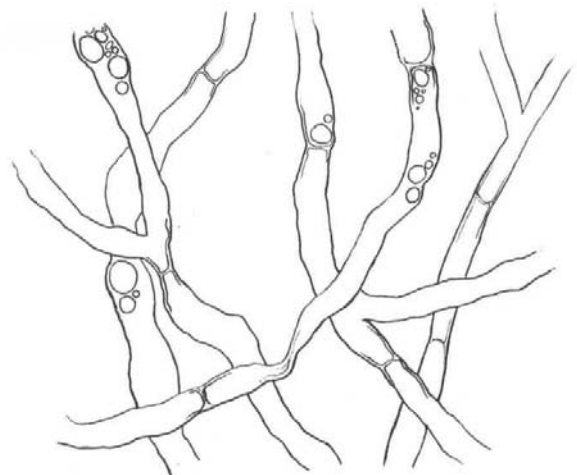
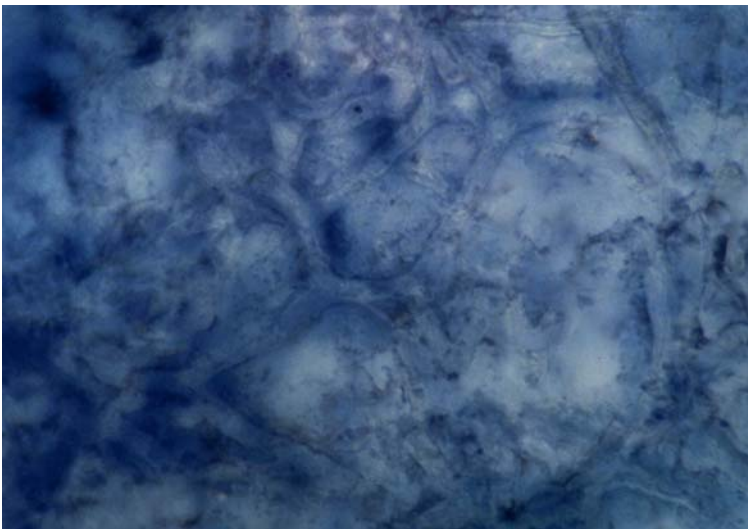
Tips

Monopodial pinnate root systems, with straight to bent tips. Young tips pearly white, becoming pinky orange with age. Smooth texture with shiny lustre, no mycelial strands nor emanating hyphae.



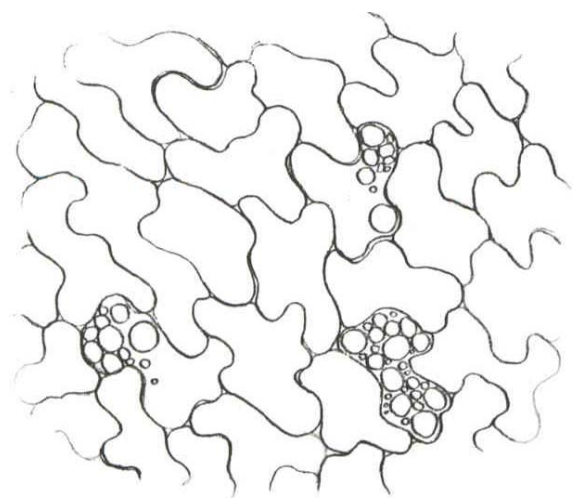
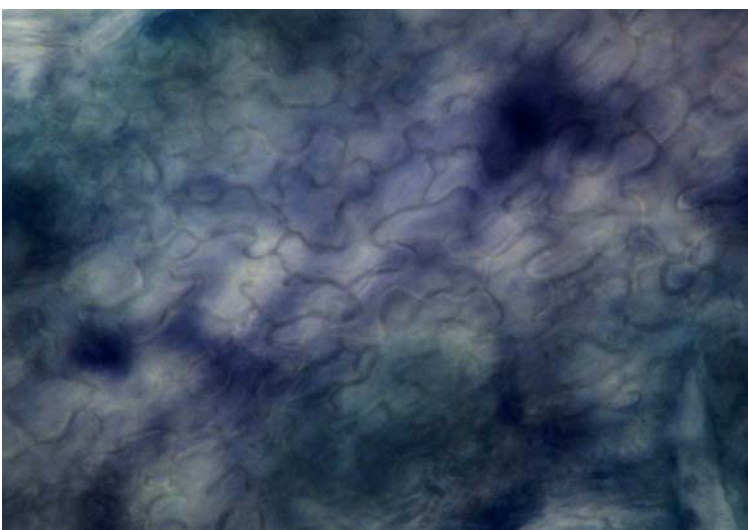
Outer mantle

Net prosenchyma, cells 3 to 4 μm wide, with no ornamentation nor clamps. Septas common, and hyphal junctions common, with occasional oil bodies.



Inner mantle

Interlocking irregular synenchyma, cells 5 μm wide and 10 to 15 μm long, with no contents or ornamentation. Tightly packed, with thin walls, and occasional oil bodies.



Emanating hyphae

Few to common, 1.5 to 2 μm wide, often twisted and bent. No ornamentation nor clamps, few septas.
