

Russula occidentalis

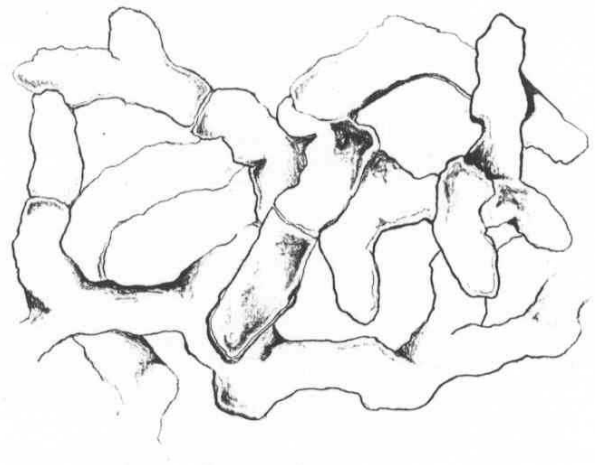
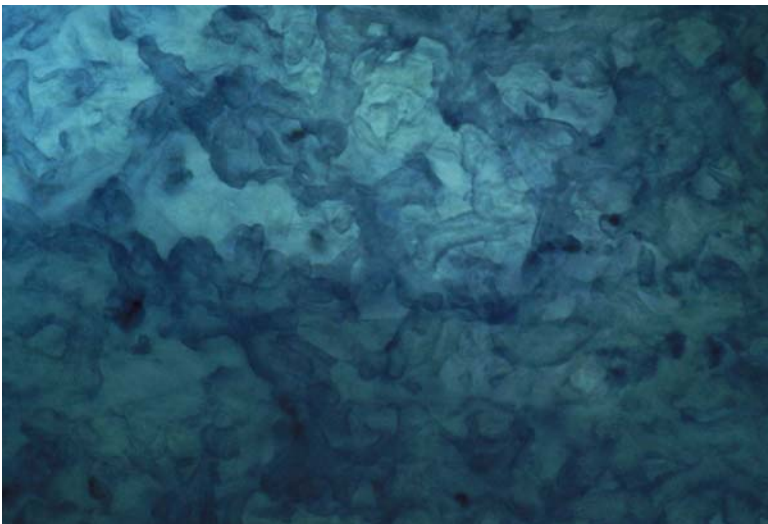
Tips

Monopodial pinnate systems with bent tips. Golden-yellow colour with pearly cream apices, becoming gray with age. Fine grainy to warty texture, matte lustre, no visibility of host, no mycelial strands nor obvious emanating hyphae.



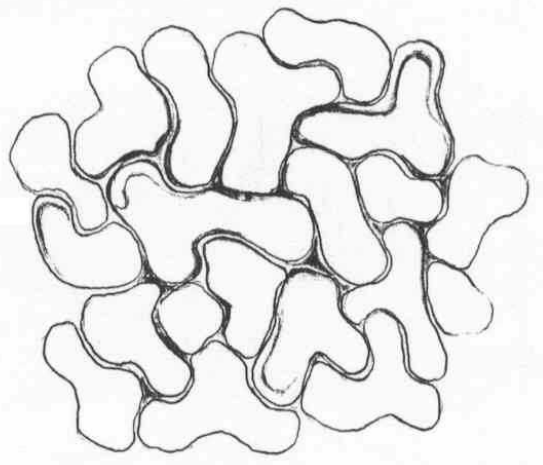
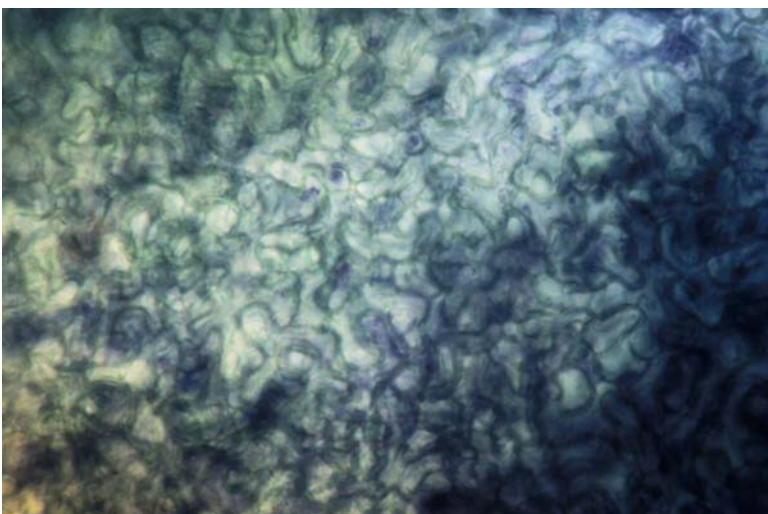
Outer mantle

Sporadic net prosenchyma, with blunt or rough edges and 'creased' appearance. Cell width 3 to 4 μm , length 9 to 15 μm . No clamps nor ornamentation, and rare hyphal junctions.



Inner mantle

Interlocking irregular synenchyma, cell width 3 μm (2-4 μm), length 10 μm (8-12 μm), no ornamentation, no contents, and no clamps. Thick cell walls can often be seen.



Emanating hyphae

Rare, cell width 2 μm , with finely verrucose ornamentation, no clamps, and rare hyphal junctions.

Cystidia

Few, thin walled, slightly acuminate to blunt tip, length 15 μm , width 4 μm , no ornamentation, no clamps, rare septa. Some shorter cells of the outer mantle could be flattened cystidia.
