

Russula emetica

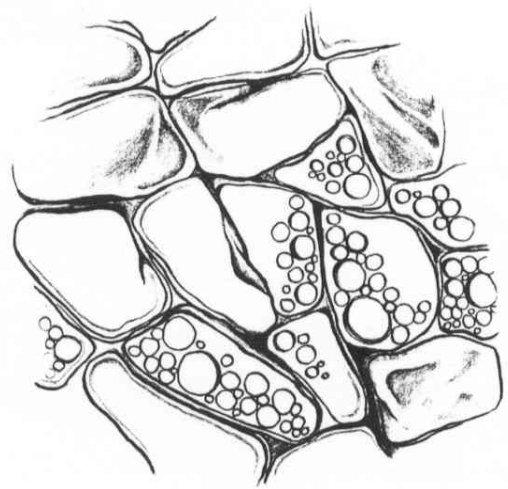
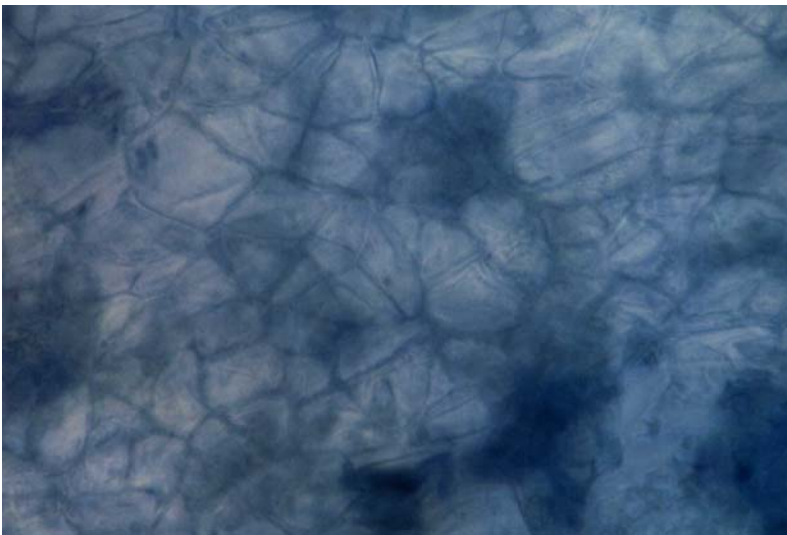
Tips

Monopodial pinnate root systems, with smooth bent tips, and an orangey-brown colour. Fine grainy texture becoming coarser on older tips.



Outer mantle

Regular synenchyma, occasionally non-interlocking irregular synenchyma, with oil-bodies. Some depth and texture creates a cube shape for each cell in the squash. Cells 10 μm wide by 15 μm long.



Inner mantle

Regular synenchyma, similar to outer mantle.

Emanating hyphae

Rare, thin hyphae (2 μm wide), no ornamentation, no clamps.

Cystidia

Rare, thin-walled, slight acuminate in shape. Length 15 to 20 μm , 3 to 5 μm wide. Some granular contents.

