

Russula decolorans

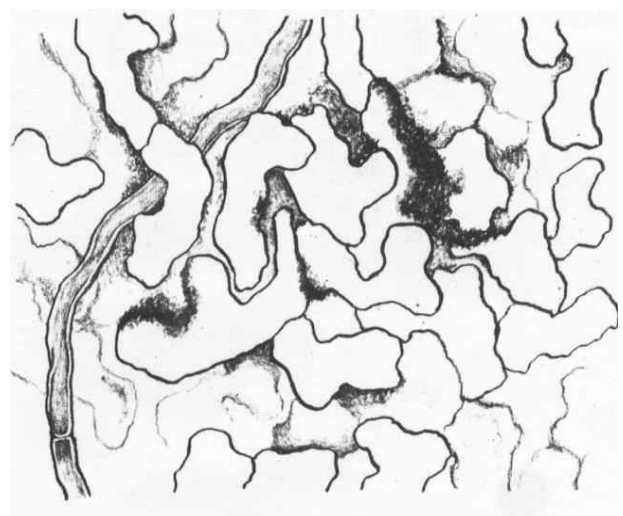
Tips

Monopodial pinnate root systems, with bent tips. Golden-yellow colour when young, changing to orangey-brown and then a gray-brown on older tips. Apices pearly white. Texture finely grainy, no mycelial strands nor emanating hyphae. Often in large colonies with trapped debris.



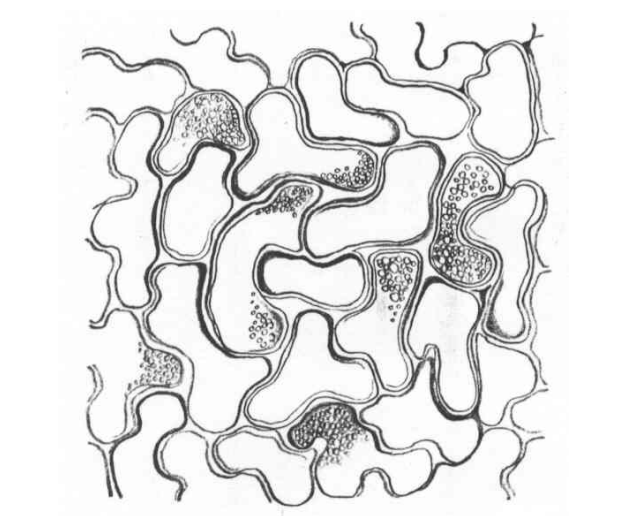
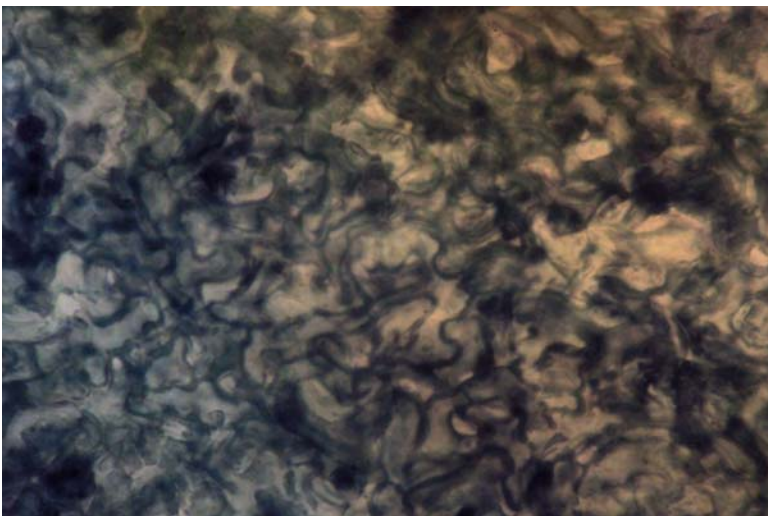
Outer mantle

A discontinuous layer, somewhat net synenchyma, with some granular material on cells, creating an uneven surface. Cells 5 μm wide, with no contents nor clamps. Hyphal junction frequency common.



Inner mantle

Interlocking irregular synenchyma, cells 5 μm wide, and 5 – 10 μm long. Oil-bodies common but not in every cell.



Emanating hyphae

Hyphae rare, cells 1-2 μm wide, with no ornamentation nor clamps.
