

## Russula claroflava

---

### Tips

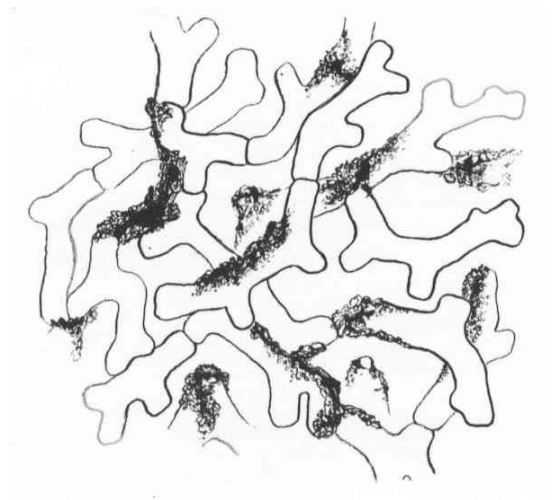
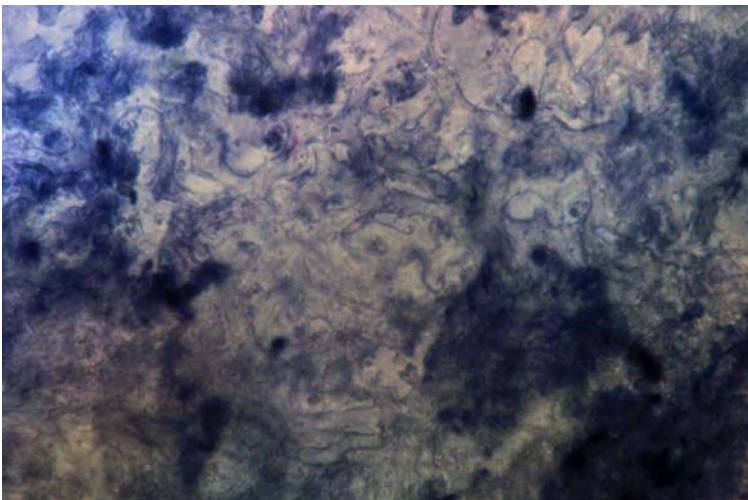
Monopodial pinnate, with bent tips. Young tips a golden-yellow colour, with pearly apices, becoming more brown and grey-brown with age. A finely grainy texture, with no mycelial strands nor emanating hyphae.



---

### Outer mantle

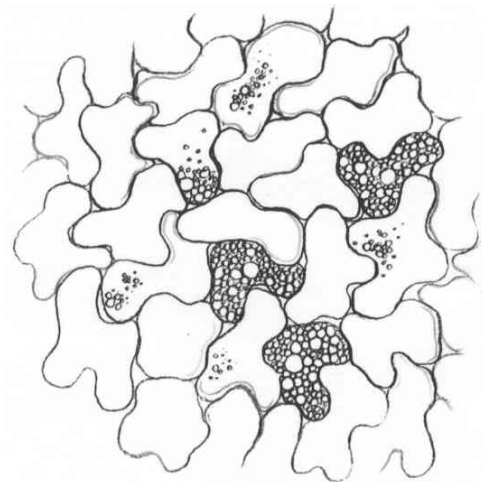
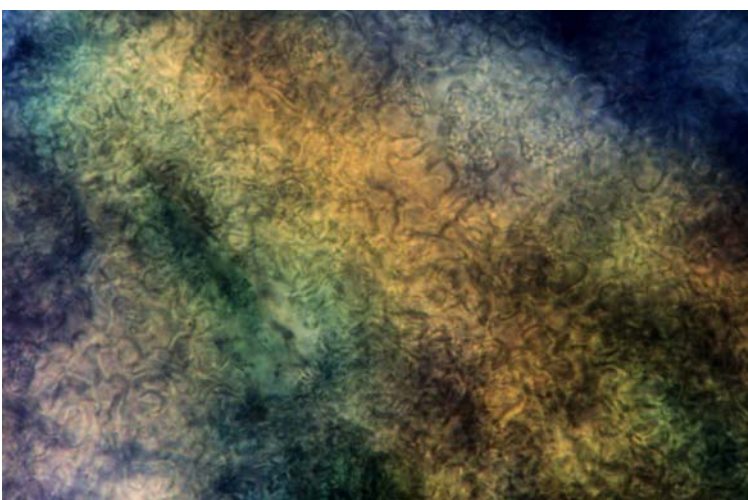
A net prosenchyma to net synenchyma arrangement of cells, often encrusted with granular material (does not appear to be just debris). Cells 4  $\mu\text{m}$  wide, with no clamps, this layer likely creates the pebbly texture of the mantle.



---

### Inner mantle

Interlocking irregular synenchyma, cells 3  $\mu\text{m}$  wide and 5 to 8  $\mu\text{m}$  long. Numerous cells with oil-bodies, no clamps.



---

### Emanating hyphae

Few emanating hyphae, 2 to 4  $\mu\text{m}$  wide, with no ornamentation, few septas, and no clamps.

---