

Russula aeruginea

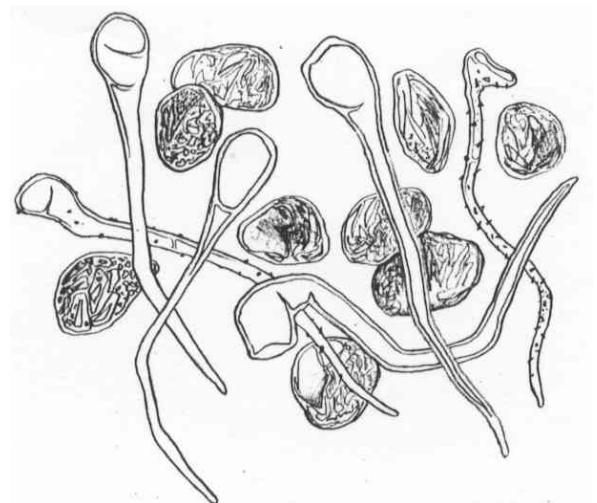
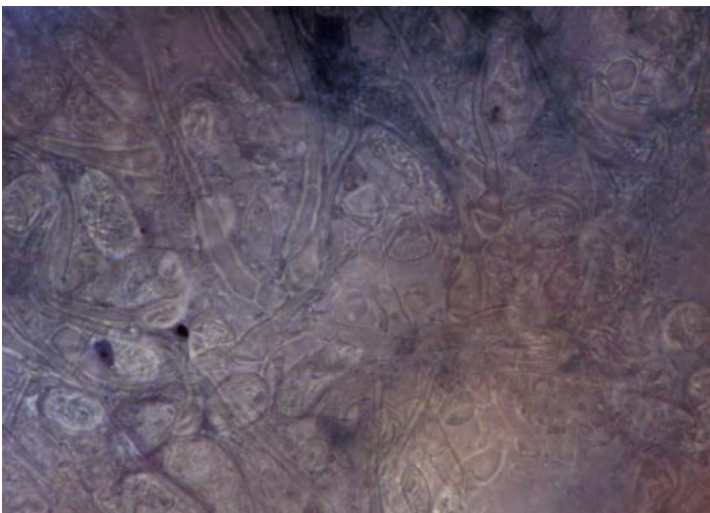
Tips

Monopodial pinnate root systems, with straight to bent root tips. Tips yellow-brown in colour, getting darker with age, with a short, spiny texture under high magnification. No mycelial strands nor emanating hyphae.



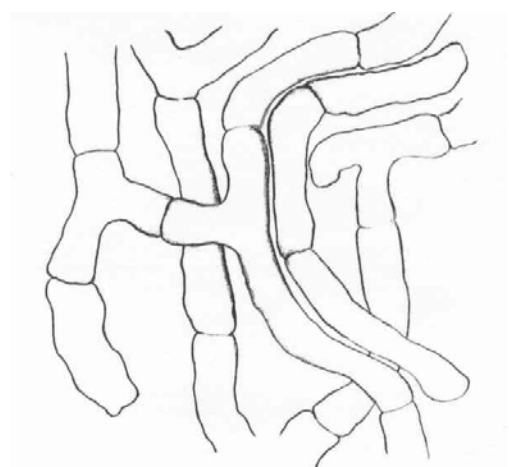
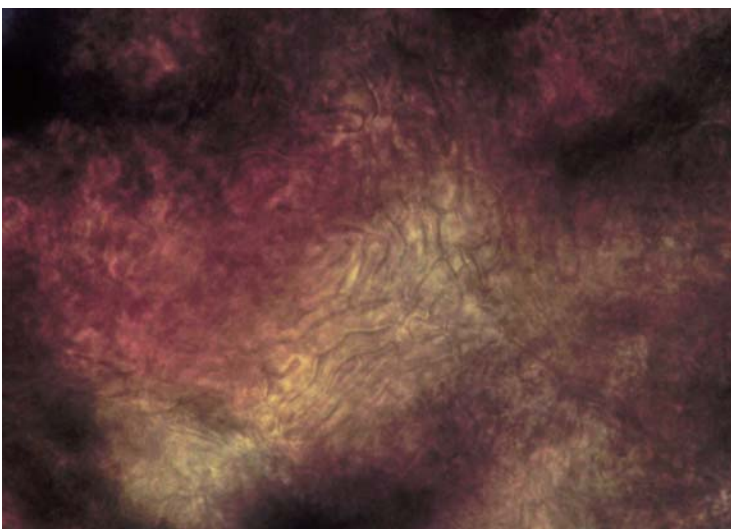
Outer mantle

Non-interlocking irregular synenchyma, 5 to 7 μm wide and 10 μm long. Egg-shaped cells, with granular contents, distributed discontinuously. No clamps, and no hyphal junctions (cystidia also included in figure).



Inner mantle

Net prosenchyma, cells 3 μm wide, 2 to 3 layers thick, with no ornamentation nor clamps. Septas common and quite obvious.



Cystidia

Common, bristle-like and awl shaped, 50 μm long (30 to 70 μm), and 2 to 3 μm wide. Mostly smooth, but sometimes with crystalline ornamentation and often bent and twisted. Cystidia shown in o.m. drawing.
