

Rozites caperata

Tips

Single tips, quite small, not branched, yellow to yellow-brown in colour with pearly-white apices. Tips are faintly woolly with few, light coloured emanating hyphae.

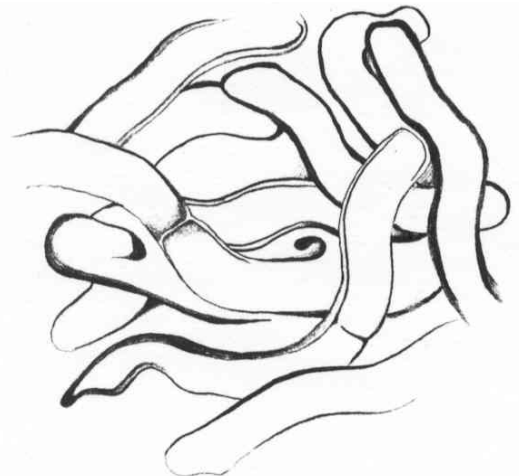
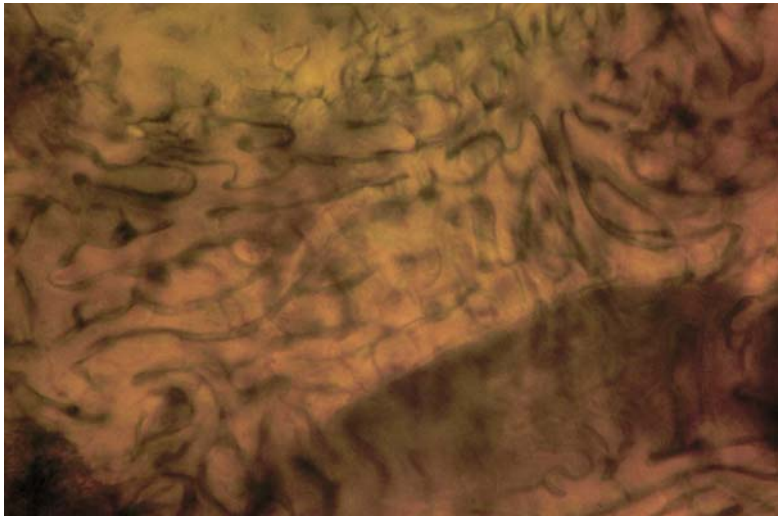


Outer mantle

Net prosenchyma, cells 3-4 μm wide, with some granular contents. Hyphal junctions are common, forms Y-like cells, no clamps.

Inner mantle

Net synenchyma, cells 6 μm (4-8 μm) wide, about 25 μm long, with thick cells walls, creates a 'swirl' effect. No ornamentation nor clamps.



Emanating hyphae

Few emanating hyphae, cells 6 μm wide, with clamps and occasional granular contents. Thick cell walls (1.5 μm wide), hyphae often twisted and occasionally branched.

