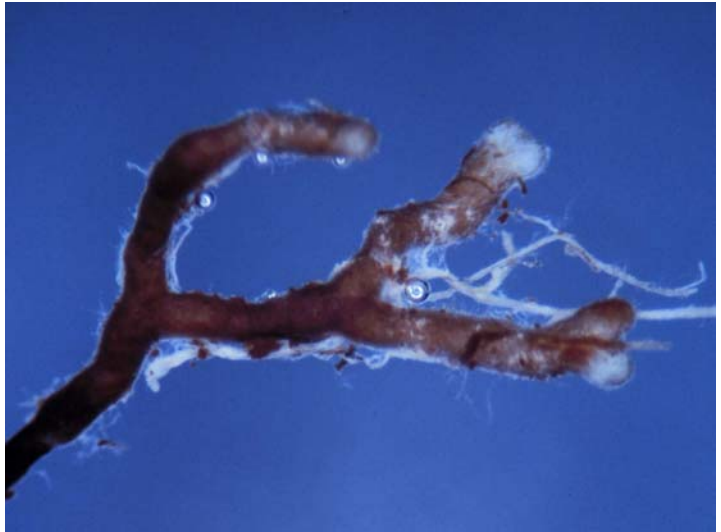


## Leccinum aurantiacum

---

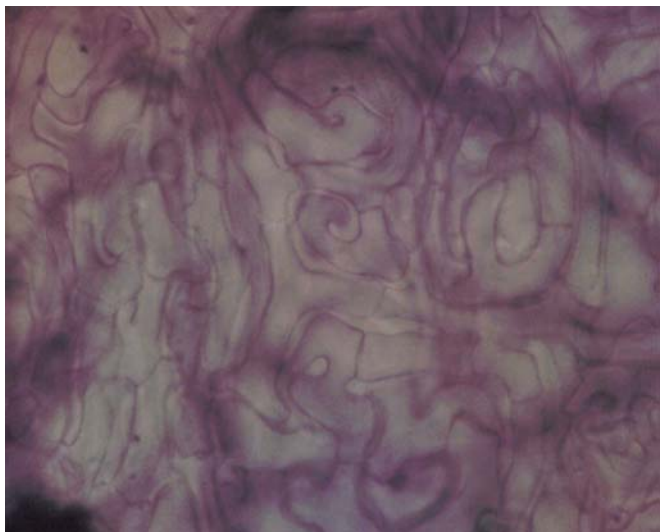
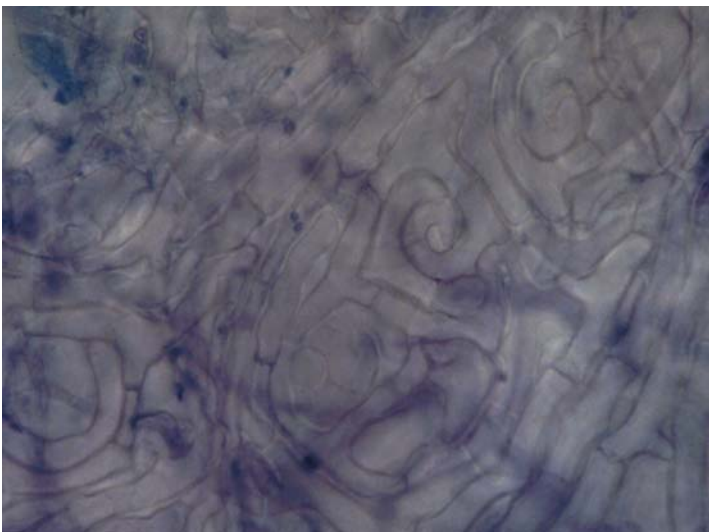
### Tips

Monopodial pinnate to irregular root systems. Tips bent, smooth and golden brown when young, somewhat felty and with white patches when older. Occasional flat angle mycelial strands.



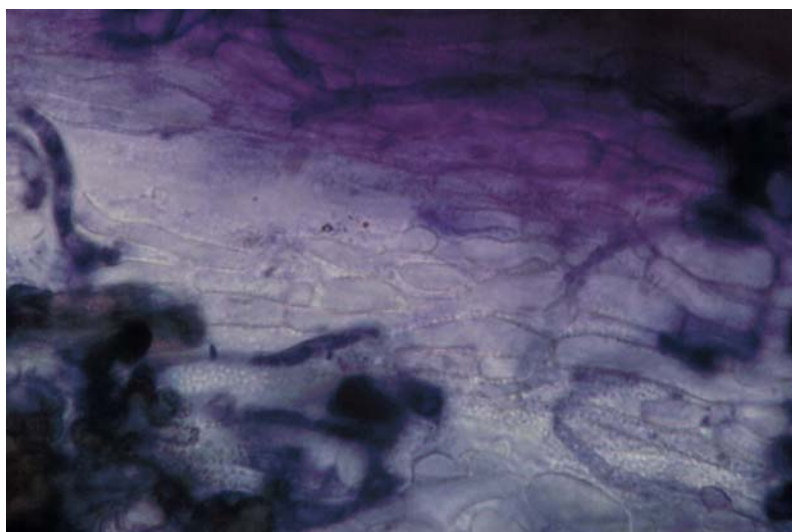
### Outer mantle

Net synenchyma, cells 5 (3-7)  $\mu\text{m}$  wide, with no ornamentation and no clamps. Mantle has swirl patterns, interspersed with some longer cells. Septa are common and sometimes elliptical and darkly stained.



### Mycelial strands

Smooth undifferentiated, with cells 4-6  $\mu\text{m}$  wide. Fine verrucose ornamentation along cell surface, no clamps, and frequent septas.



### Emanating hyphae

Common, cells 1.5 (1-2)  $\mu\text{m}$  wide. Few septas, no clamps, often flaccid, twisted and darkly stained.

---