

Lactarius rufus

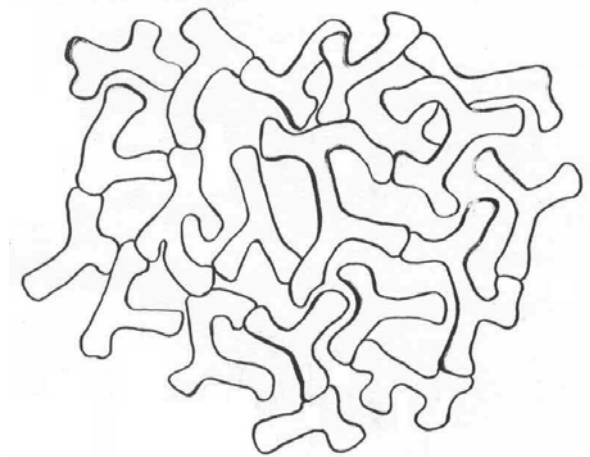
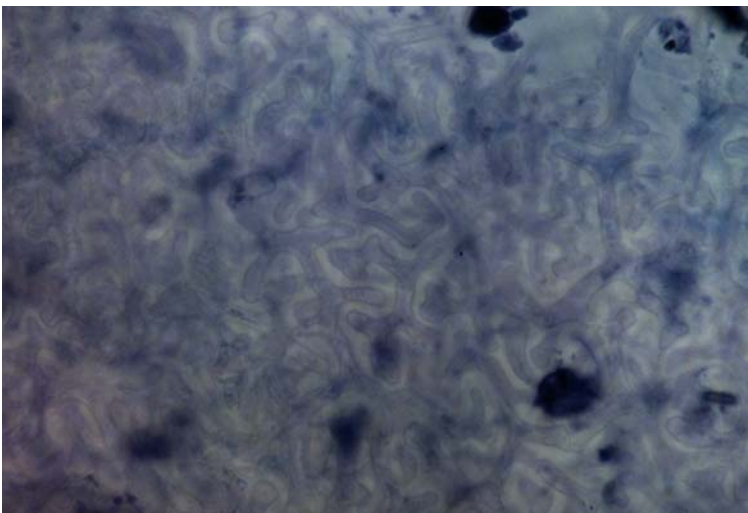
Tips

Monopodial pinnate root systems, with bent tips. Golden-yellow colour when young, and more pinky brown with age. Smooth texture, with no mycelial strands or emanating hyphae.



Outer mantle

Net prosenchyma, cell width 2-3 μm wide, with no ornamentation nor clamps. Frequent hyphal junctions, with cells butting up together.



Inner mantle

Interlocking irregular synenchyma, cells 4-6 μm wide, 10-15 μm long. Cells contents clear with no clamps nor ornamentation. Laticifers very common, often branched, and sometimes filled.

