

Lactarius resimus

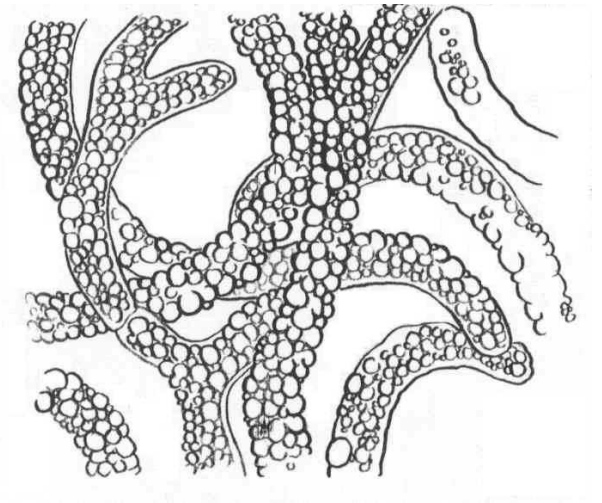
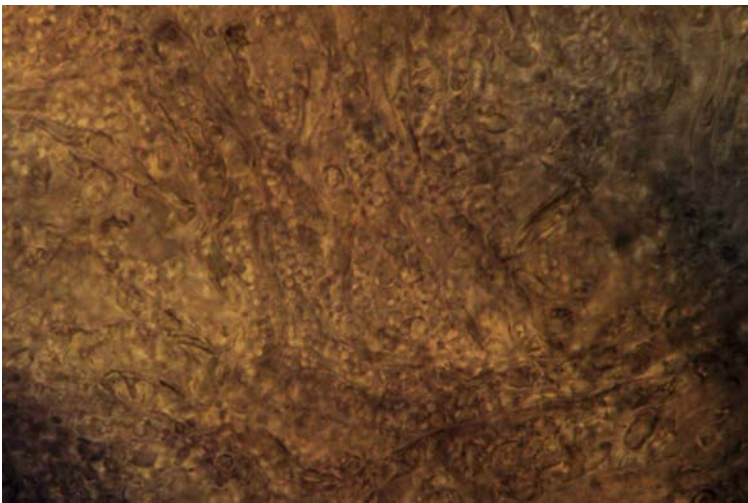
Tips

Monopodial pinnate root systems, with bent tips. Tips white in colour, with a 'frosted' appearance, creating a finely grainy texture. Some visibility of host, and frequent restricted point mycelial strands, with no emanating hyphae.



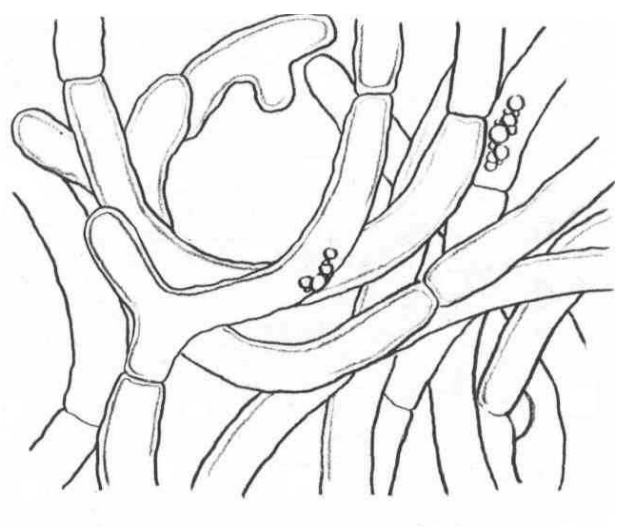
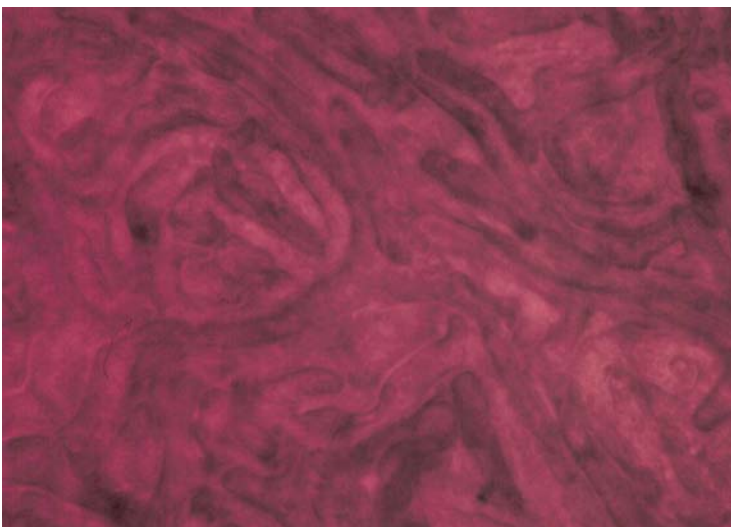
Outer mantle I

Net synenchyma to prosenchyma, with large cells, 5 μm in width (4 – 7 μm), creating a swirl effect. In young tips the cells are covered in oil bodies (ornamentation?), and laticifers are seen occasionally.



Outer mantle II

In older tips, the amount of oil bodies is reduced, and the net synenchyma is more apparent. Cells stain a dark fuscina colour.



Mycelial strands

Strands are smooth-undifferentiated, with cells 2-3 μm wide. No ornamentation nor clamps, the hyphae are unbranched with frequent septa.
