

# Lactarius pseudomucidus

---

## Tips

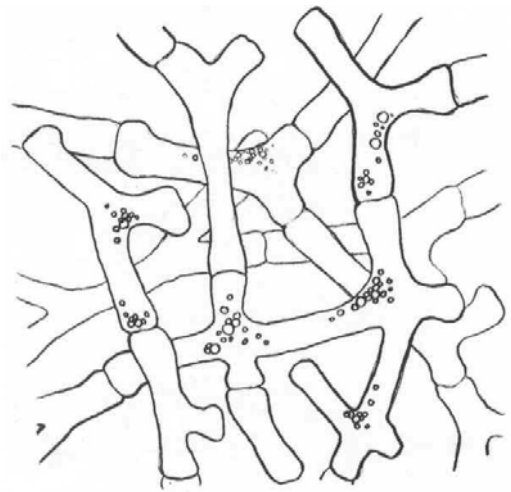
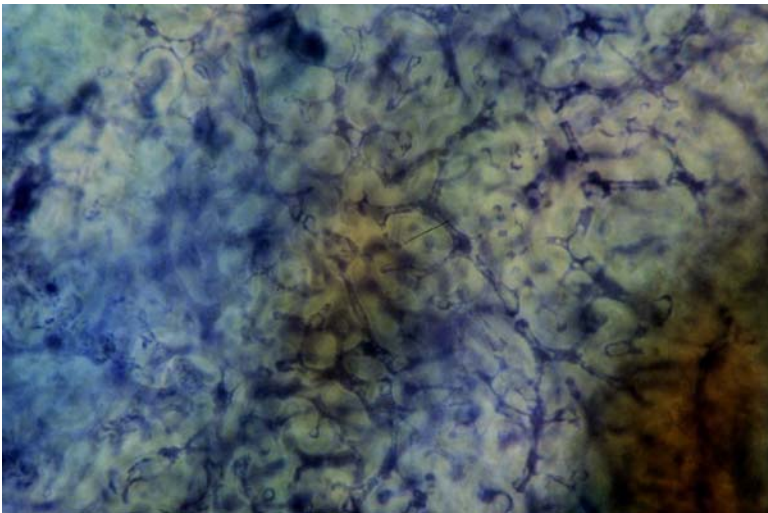
Monopodial pinnate root systems, sometimes not branched, tips straight to slightly bent. Golden orangey-yellow to golden brown in colour. Smooth texture with no mycelial strands and no emanating hyphae.



---

## Outer mantle

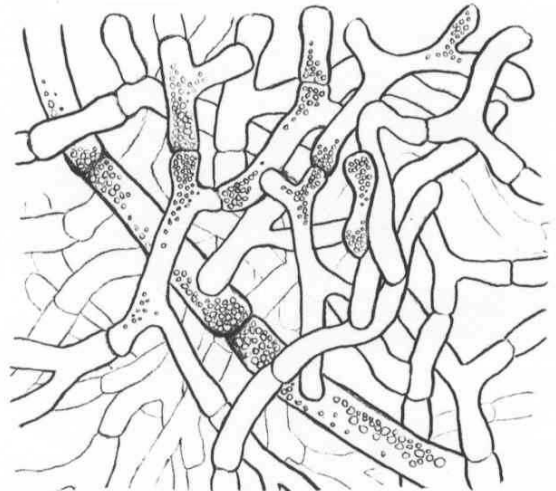
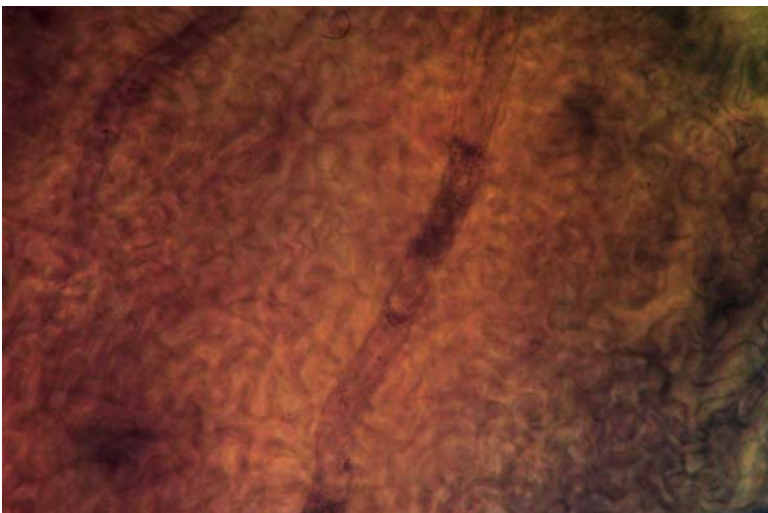
A connected net or felt prosenchyma, forms 'bone'-like cells, often with oil bodies. Cell width 2-3  $\mu\text{m}$ , length 15  $\mu\text{m}$  (10-20  $\mu\text{m}$ ). Hyphal junctions common, with no clamps nor anastomoses. This layer becomes more compact as it becomes the inner mantle.



---

## Inner mantle

Often blurry and cells indistinct, the inner mantle is a net synenchyma to interlocking irregular synenchyma, with oil bodies and laticifers. Cell width 2-3  $\mu\text{m}$ , and length 5-10  $\mu\text{m}$ . No clamps nor ornamentation.



---

## Emanating hyphae

Emanating hyphae are rare, 2-3  $\mu\text{m}$  wide, with no clamps nor ornamentation.

---