

Lactarius deliciosus

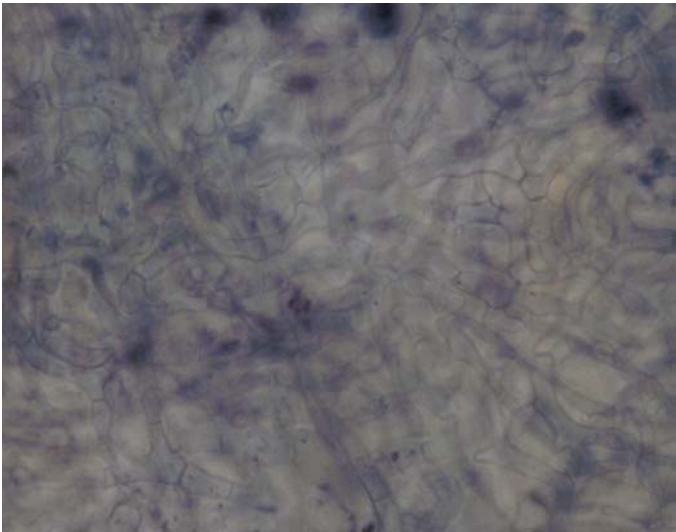
Tips

Monopodial pinnate root systems with bent tips. Tips smooth and orangey-brown, with pearl apices. Some green spots on older portions of the root tip, like the sporocarp. No mycelial strands nor emanating hyphae.



Outer mantle

Felt prosenchyma, cells 2 (1.5-2.5) μm wide, with no ornamentation and no clamps. Some oil bodies, few hyphal junctions, hyphae often parallel and somewhat knobby.



Inner mantle

Net synenchyma, 2 or 3 layers thick, cells 3 (2-4) μm wide, no clamps, and cells with common junctions and septa. Some oil bodies, and large, bright yellow laticifers are common.

