

Laccaria laccata

Tips

Monopodial pinnate root systems with bent tips. Young tips a golden-yellow colour, with pearl apices, becoming more golden-brown with age. Texture smooth, except for the cottony hyphae at the base of the root tips. No mycelial strands.

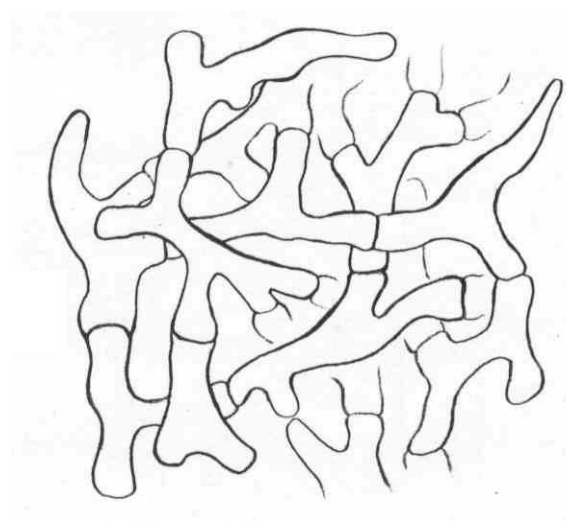
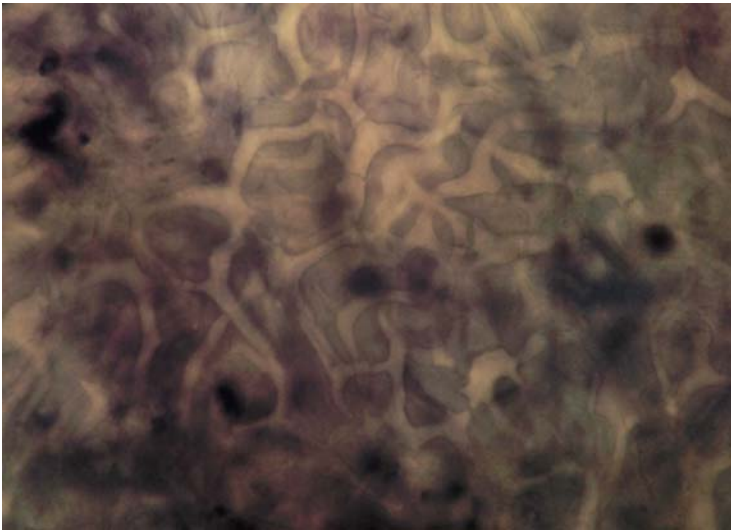


Outer mantle

A net prosenchyma, cells 2 to 3 μm wide, and approximately 15 μm long. Enlarged hyphal junctions common. No clamps nor ornamentation, cells often butt up together.

Inner mantle

Net synenchyma, cells 3 μm wide, up to 20 μm long. A progression from the outer mantle, becoming wider and thicker, often blurry. No clamps or ornamentation.



Emanating hyphae

Common, often stained a dark turquoise blue, cells 3 μm wide. Verrucose to globular ornamentation common, sometimes more encrusted. Clamps and septas common, with few hyphal junctions. H-shaped anastomoses without clamps can be found. Generally emanating hyphae more common at the base of the root tips.

