

Laccaria bicolor

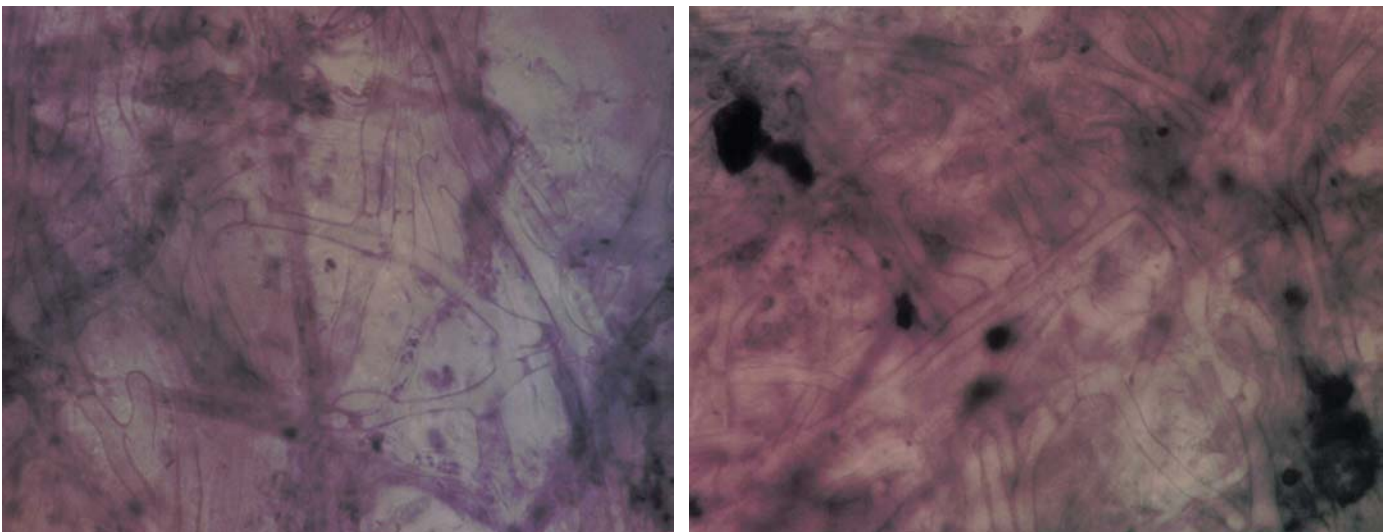
Tips

Monopodial pinnate root systems. Young tips quite smooth and brown, older tips with some white emanating hyphae. No mycelial strands.



Outer mantle

A net prosenchyma, cells 3 (2-4) μm wide, with no ornamentation and rare clamps. Hyphal junctions common, often enlarged, and occasional oil bodies. Septas common and often darkly stained.



Inner mantle

Net prosenchyma to net synenchyma, a tighter version of the outer mantle. Cells 2-3 μm wide, with common septas and no clamps.

Emanating hyphae

Scattered along surface of mantle, with clamps and enlarged hyphal junctions. Extension of outer mantle.

Cystidia

Few cystidia, 2-3 μm wide and quite long, with clamps and occasional oil bodies.

