

Hygrophorus saxatilis

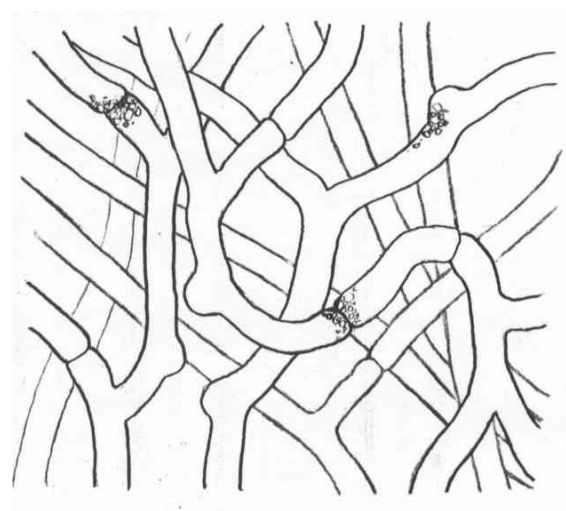
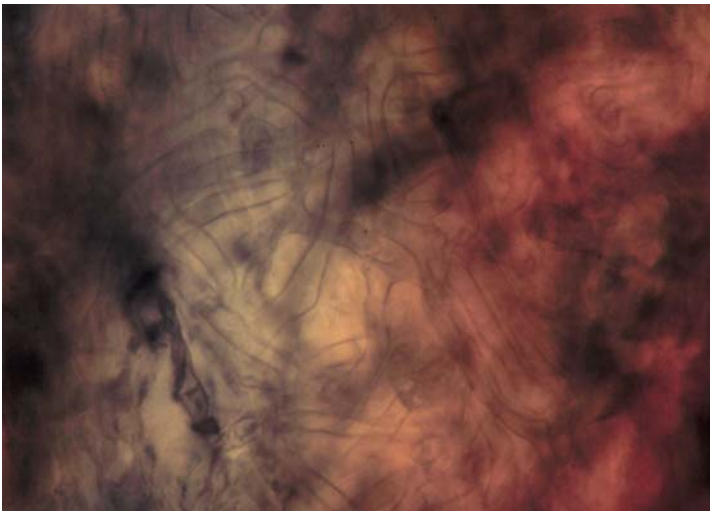
Tips

Unbranched root systems, often very long, forming large colonies, with a beaded tip shape. Young tips are a yellow-brown, becoming more golden-brown with age. A smooth texture, with no mycelial strands nor obvious emanating hyphae.



Outer mantle

A net prosenchyma, cells 3 μm (2-4 μm) wide, often with irregular shapes. No ornamentation, rare oil-bodies, and no clamps. Hyphal junctions and septa common.



Inner mantle

A net synenchyma, cells 3 μm wide, with no ornamentation nor clamps. Cells often aligned in parallel, generally blurry and difficult to see.

Emanating hyphae

Emanating hyphae common, cells 4 μm (3-6 μm) wide. No ornamentation, with rare oil-bodies, and few, large clamps. Hyphae have few junctions, and few septas, with large 'flakes' sometimes present.

