

# Hygrophorus piceae

---

## Tips

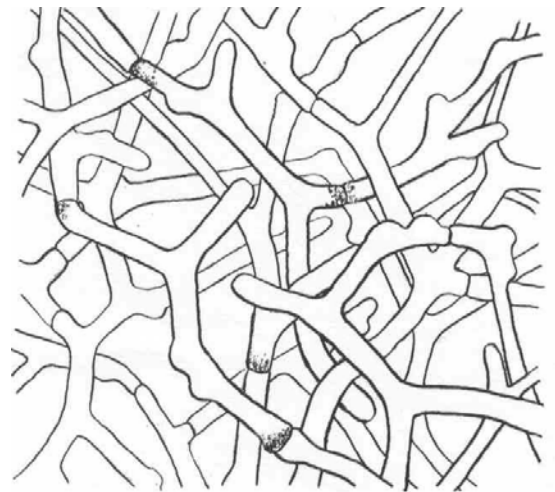
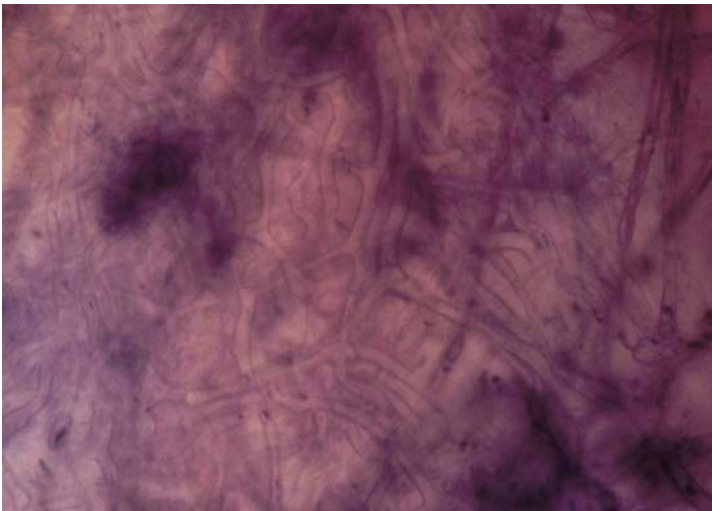
Unbranched root systems, with beaded root tips, sometimes a bit more swollen. Young tips a golden-brown, becoming more brown with age. Smooth texture, with no strands nor obvious emanating hyphae.



---

## Outer mantle

A net prosenchyma, cells 1.5 – 2  $\mu\text{m}$  wide, irregular in shape, with frequent septas. Y-shaped hyphal junctions common, with some oil-like bodies and no clamps.



---

## Inner mantle

A net synenchyma, cells 1.5 – 2  $\mu\text{m}$  wide, with fewer hyphal junctions and no clamps. A bit blurry and difficult to see in a root squash.

---

## Emanating hyphae

Emanating hyphae common, cells 3.5  $\mu\text{m}$  wide (2 – 4  $\mu\text{m}$ ), with no ornamentation and common clamps. Septas frequent, with few hyphal junctions, the hyphae often have darkly-stained granular material throughout the cells.

