

Hygrophorus camarophyllus

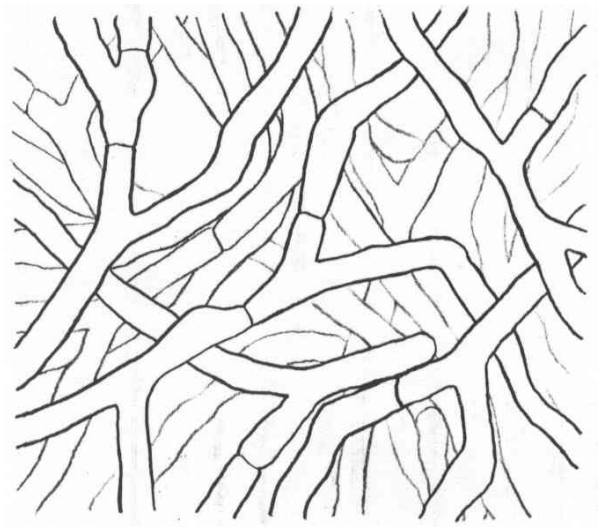
Tips

Root systems mostly not branched, sometimes limited monopodial pinnate. Tips long, thin, generally bent, with a slight 'bead' shape. Young tips yellow-brown in colour, to orangey-brown on older tips. A smooth texture, with no mycelial strands nor emanating hyphae (slight fuzz at high magnification).



Outer mantle

A net prosenchyma, becoming a net synenchyma, cells 3 (2) μm wide, with no ornamentation nor clamps. Hyphal junctions common, sometimes enlarged, and sometimes hyphal cells swollen in spots.



Inner mantle

A net synenchyma, cells 3 μm wide, with no ornamentation nor clamps. A tighter version of the outer mantle, sometimes gappy and difficult to see well.

Emanating hyphae

Emanating hyphae common, cells 4 μm wide (3-5 μm), with no ornamentation and few, large clamps (5 μm long). Hyphal junctions are common, with some H-shaped anastomoses with and without clamps. Hyphae often folded, sometimes flaccid.

