

# Hygrophorus bakerensis

---

## Tips

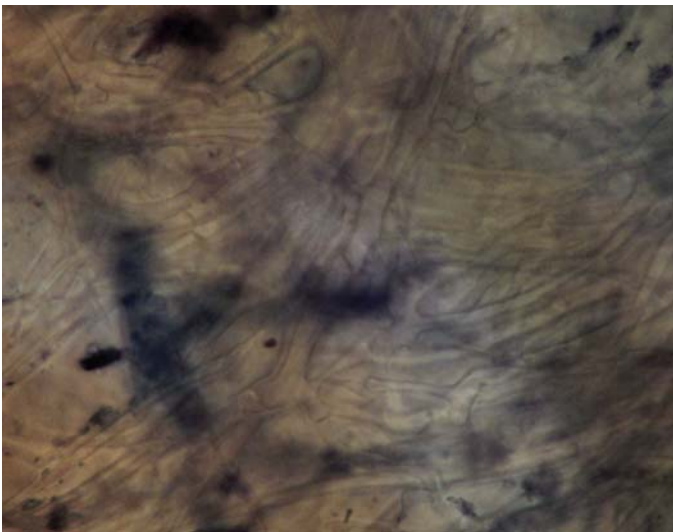
Root systems mostly not branched, generally bent or with a slight 'bead' shape. Young tips yellow-brown in colour, with light yellow apices. Finely grainy texture, with no mycelial strands nor emanating hyphae.



---

## Outer mantle

A felt prosenchyma, cells 2 (1-3)  $\mu\text{m}$  wide, with no ornamentation nor clamps. Hyphal junctions few, sometimes enlarged, and occasional oil bodies.



---

## Inner mantle

Difficult to see, likely a net synenchyma, cells 3  $\mu\text{m}$  wide, with no clamps.

## Emanating hyphae

Few emanating hyphae, cells 2 (3)  $\mu\text{m}$  wide, with no ornamentation and few clamps. No hyphal junctions, some portions of the hyphae look encrusted.

