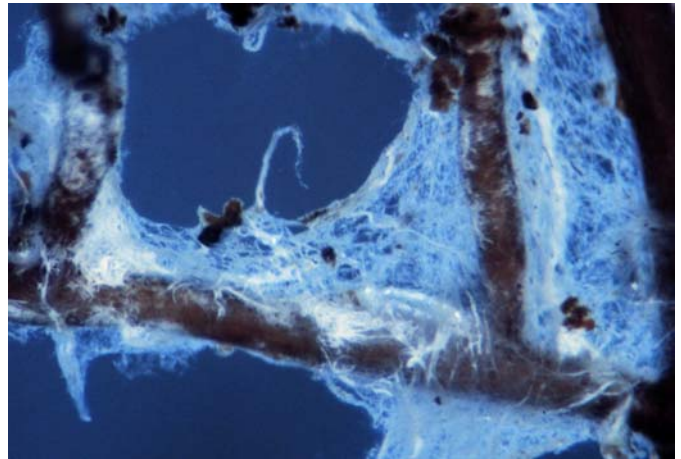


Hebeloma crustiliniforme

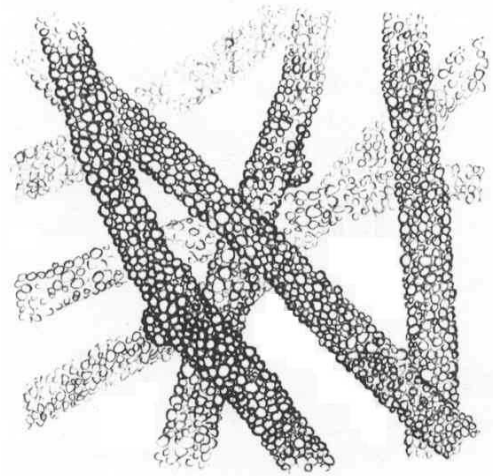
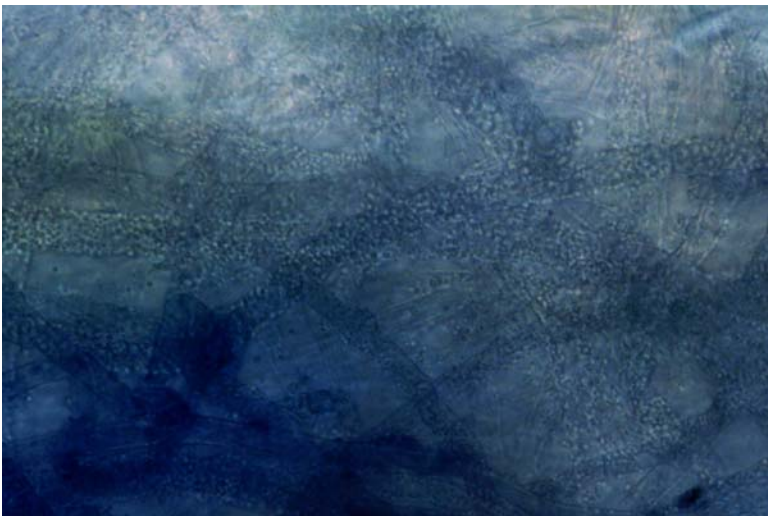
Tips

Monopodial pinnate root systems, sometimes not branched, with generally bent tips. White in colour, with distinct cob-webby texture as hyphal wefts form along axes. Host root often visible through mantle. Mycelial strands common as hyphal fans, and emanating hyphae common.



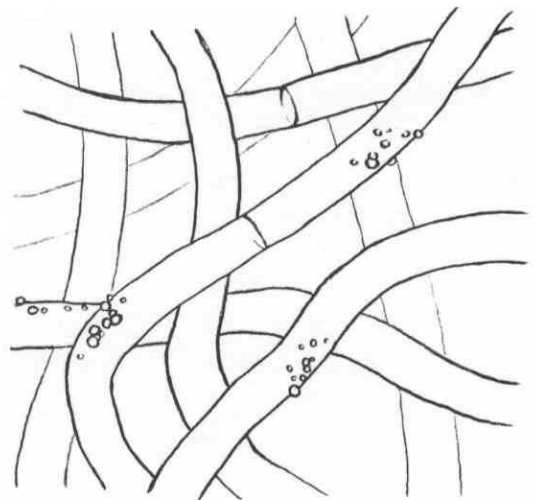
Outer mantle

Felt prosenchyma, cells 3-4 μm wide, with abundant globular ornamentation. Light yellow green in toluidine blue stain. Clamps present but rare, as are hyphal junctions.



Inner mantle

Felt prosenchyma, cells 3-4 μm wide, with little ornamentation and no contents. Clamps and septa rare.



Mycelial strands

Loose, undifferentiated strands, hyphae width 5 μm . Globular ornamentation, with few clamps and rare septa. Few hyphal junctions, with H-shaped anastomoses without clamps.

Emanating hyphae

Common, 5 μm wide, with globular ornamentation and few clamps. H-shaped anastomoses without clamps. Strong fuschia colour in toluidine blue stain, ornamentation often dark blue and clamps a darker purple.
