

## Cortinarius subscaurus

---

### Tips

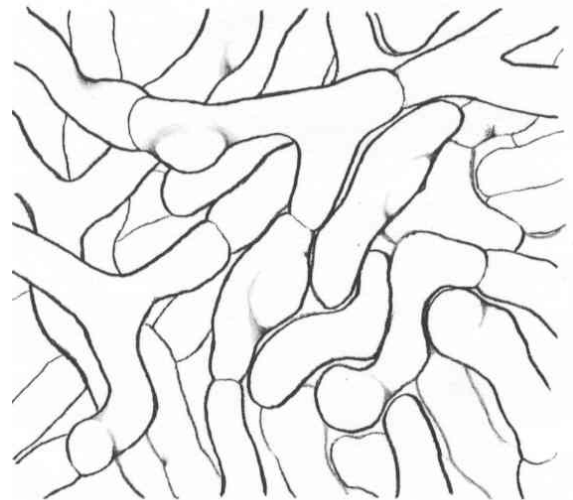
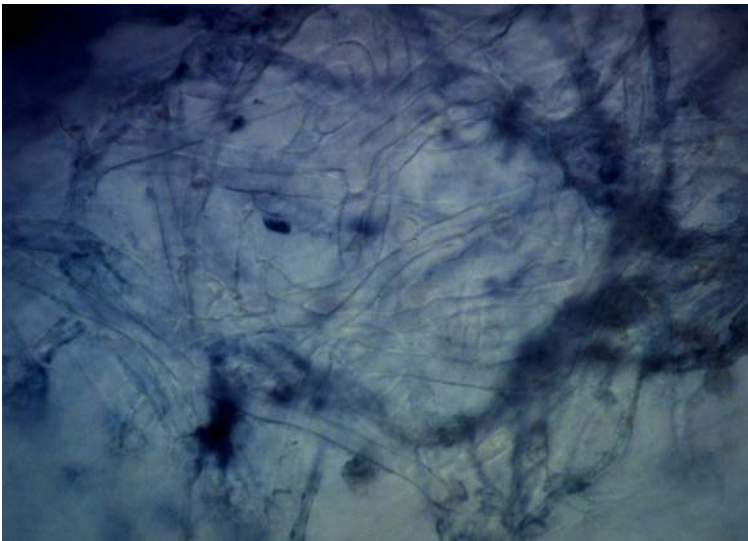
A coralloid- to tuberculate-shaped root system, with tortuous root tips. Tips are white in colour, with a faint yellow-greenish tinge. Emanating hyphae is tightly wound, creating a cottony texture with a shiny lustre. Host is sometimes visible, with a few restricted point strands.



---

### Outer mantle

A net prosenchyma to net synenchyma, cells 5  $\mu\text{m}$  wide (5-7  $\mu\text{m}$ ). No clamps, and few oil-like bodies, the outer mantle is generally difficult to see through the emanating hyphae.



---

### Mycelial strands

Loose-undifferentiated strands, with cells 3-4  $\mu\text{m}$  wide and clamps.

### Emanating hyphae

Emanating hyphae common, cells 3  $\mu\text{m}$  wide, with clamps and no ornamentation. Few hyphal junctions, with H-shaped anastomoses with clamps sometimes present. Outer edge of emanating hyphae and mycelial strands are often a translucent grey colour.

