

Cortinarius semisanguineus

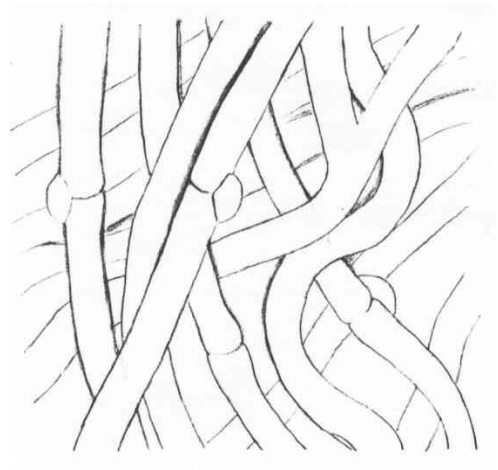
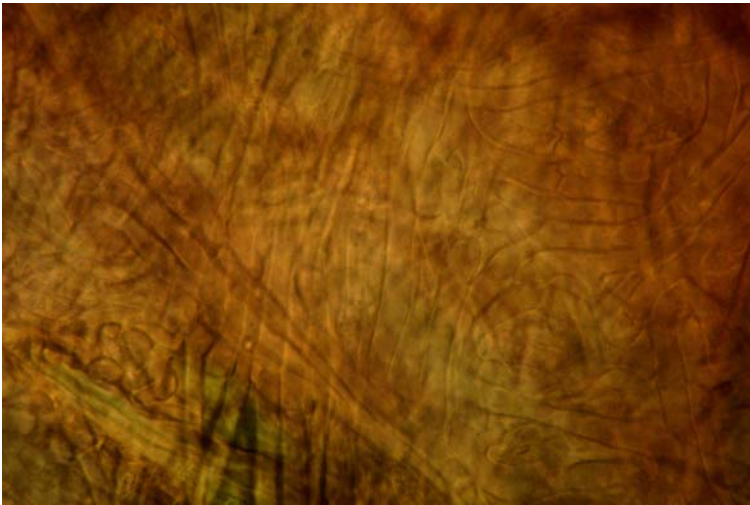
Tips

Monopodial pinnate to irregular root systems, tips bent and whitish-yellow in colour. Woolly to cottony texture, reflective lustre, with mycelial strands (restricted point to flat angle) and emanating hyphae common. Mantle covers approximately 50% of host root tip.



Outer mantle

Felt prosenchyma to net prosenchyma, cell width 3-5 μm , with no ornamentation. Few clamps, few hyphal junctions, with some shadow effect along cell walls and widening at septa.



Mycelial strands

Loose-undifferentiated, 4-5 μm wide, intermittent verrucose ornamentation. H-shaped anastomoses without clamps and with clamps present.

Emanating hyphae

Emanating hyphae common, 3.5-6 μm wide, with intermittent verrucose ornamentation and some flaccid and folded cells. Few clamps, few hyphal junctions, an occasional H-shaped anastomoses without clamps and with clamps also present.

