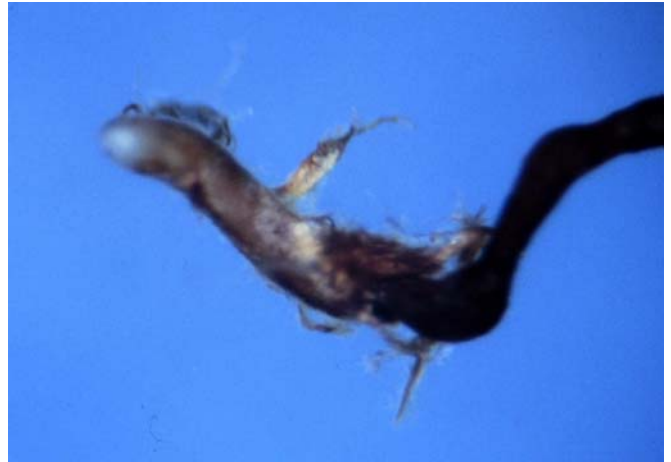
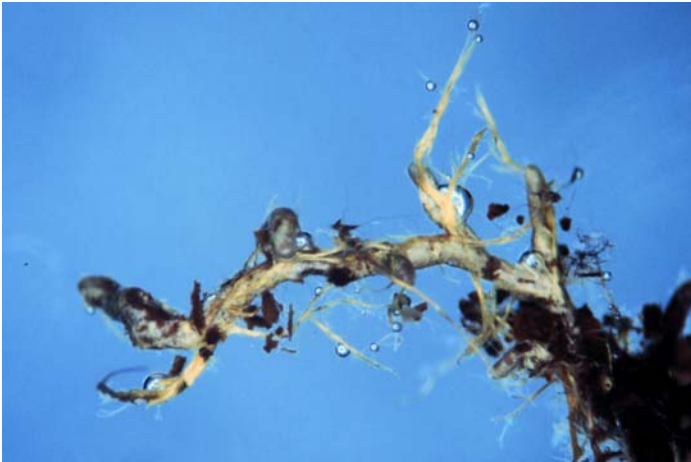


## Cortinarius croceus

---

### Tips

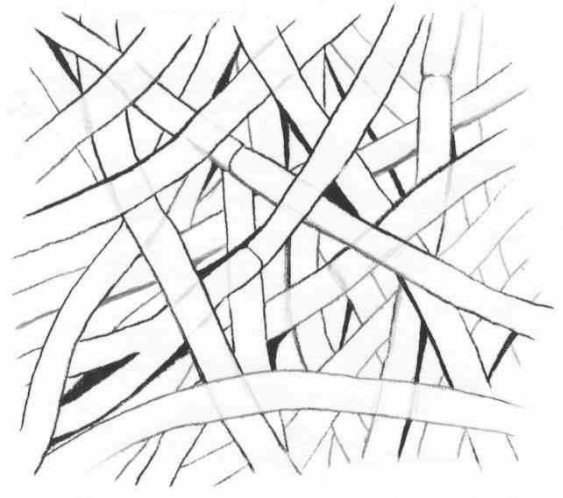
Bent to curvy root tips, with a lemon yellow colour. A felty, shiny texture, with some visibility of the host through the mantle. Restricted point mycelial strands common, with few emanating hyphae.



---

### Outer mantle

Net prosenchyma to net synenchyma, 4 to 7  $\mu\text{m}$  wide, with no ornamentation nor clamps. Two to three layers thick, it gives the appearance of stained glass.



---

### Inner mantle

Similar to outer mantle, becoming more compact in inner mantle.

### Mycelial strands

Loose-undifferentiated strands, with many clamps. Hyphae width 4  $\mu\text{m}$ , with few hyphal junctions.

### Emanating hyphae

Common, 2 to 4  $\mu\text{m}$  wide, with few clamps and few hyphal junctions. Hyphae are often flaccid and twisted, with keyhole clamps, and sometimes a bit encrusted.

