

## Cortinarius cotoneus

---

### Tips

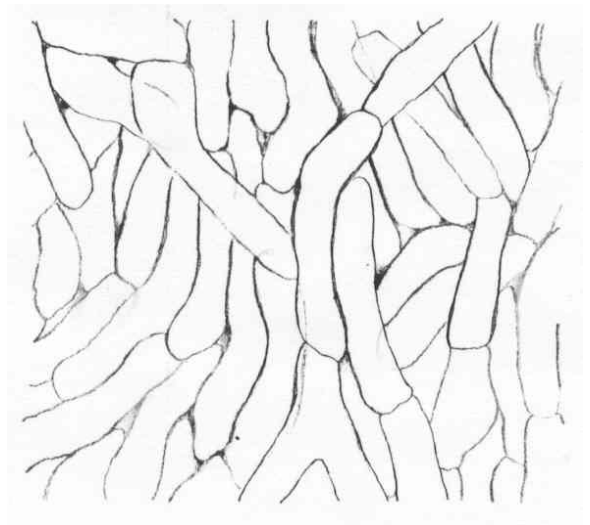
An irregularly branched root system, with bent to tortuous root tips. Tips are a yellow-olive colour, with a stringy texture, flat angle strands, and some visibility of the host. Colonies are large, with lots of debris trapped amongst the tips.



---

### Outer mantle

A net synenchyma, with cells 3  $\mu\text{m}$  wide (4–6  $\mu\text{m}$ ), and no ornamentation nor clamps. Rare septa frequency, with hyphal junctions somewhat enlarged.



---

### Mycelial strands

Smooth-undifferentiated strands, with hyphae 4  $\mu\text{m}$  wide, with no ornamentation, no contents, few septas and few clamps. Cell walls and septa often distinctly visible.

---

### Emanating hyphae

Common, cells 3–4  $\mu\text{m}$  wide, with knobby ornamentation, often twisted and flaccid. Few clamps, clear contents, and few hyphal junctions.

