

Cortinarius cinnamomeus

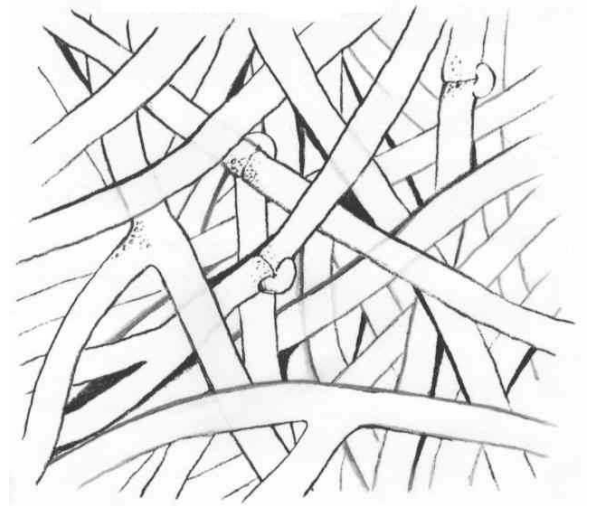
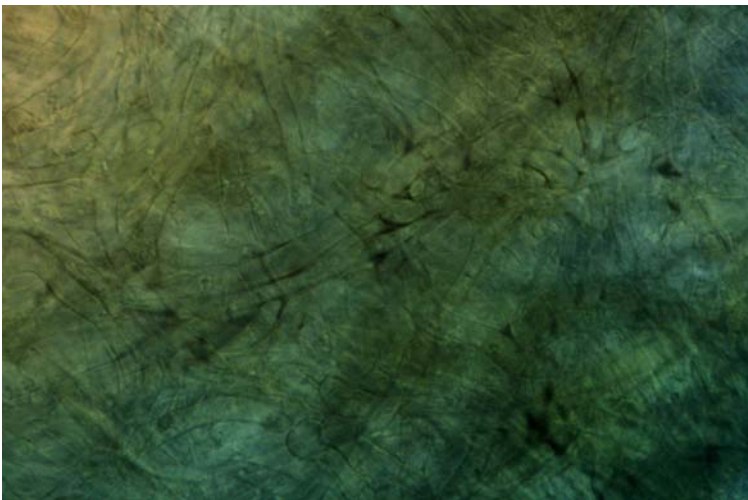
Tips

Monopodial pinnate, but often not branched, with tips tortuous to bent. Yellow-green colour, with root host visible in spots. Stringy, shiny texture, with long, restricted point strands and emanating hyphae.



Outer mantle

Net prosenchyma, cell width 3-5 μm , with no ornamentation. Clamps present, and enlarged hyphal junctions are common. Dinstinct 'shadow effect' along edges of cells.



Inner mantle

Similar to outer mantle, becoming more compact in inner mantle. Some oil-bodies near septa.

Mycelial strands

Smooth, undifferentiated strands, cell width 4 μm , with some oil-bodies or granular material in cells. Clamps are common, with few hyphal junctions and H-shaped anastomoses without clamps present.

Emanating hyphae

Common, cell width 4 μm , with some oil-bodies or granular material in cells and often flaccid and twisted. Clamps are common, and are occasionally 'key-hole' shaped. Few hyphal junctions and H-shaped anastomoses without clamps.

