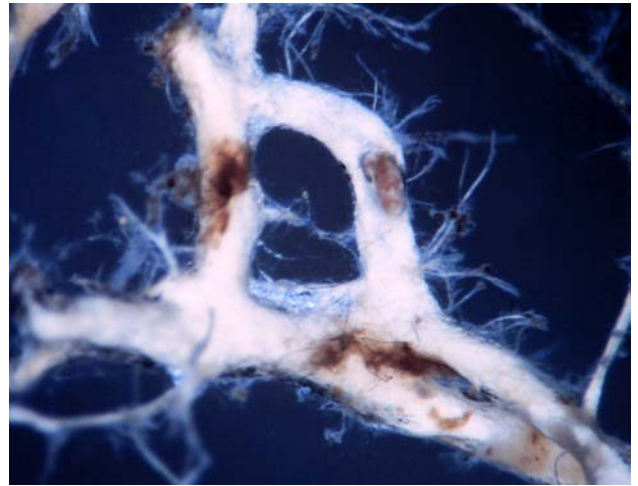
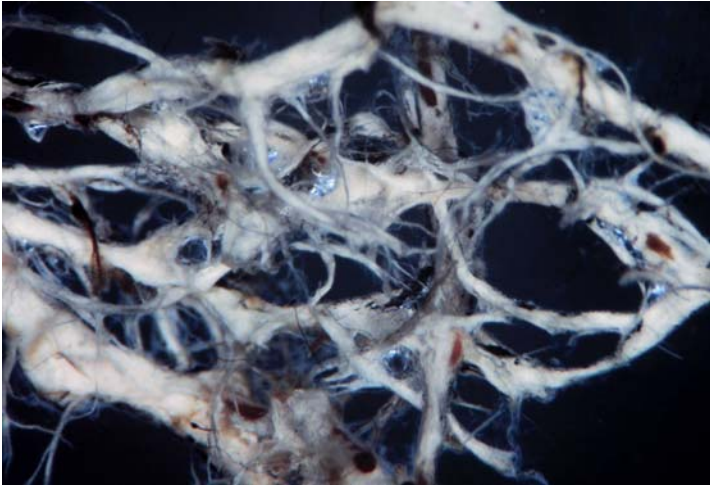


Cortinarius armillatus

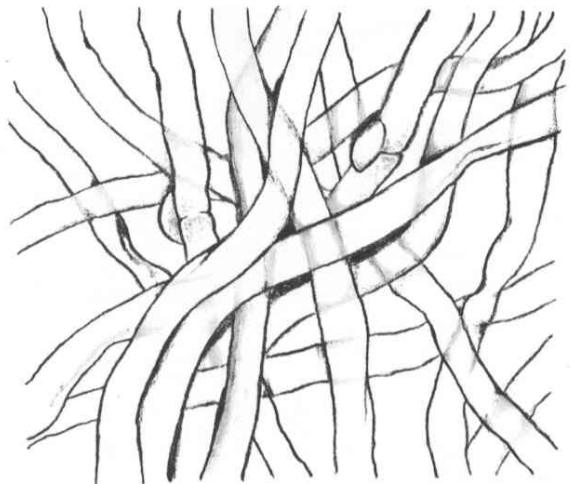
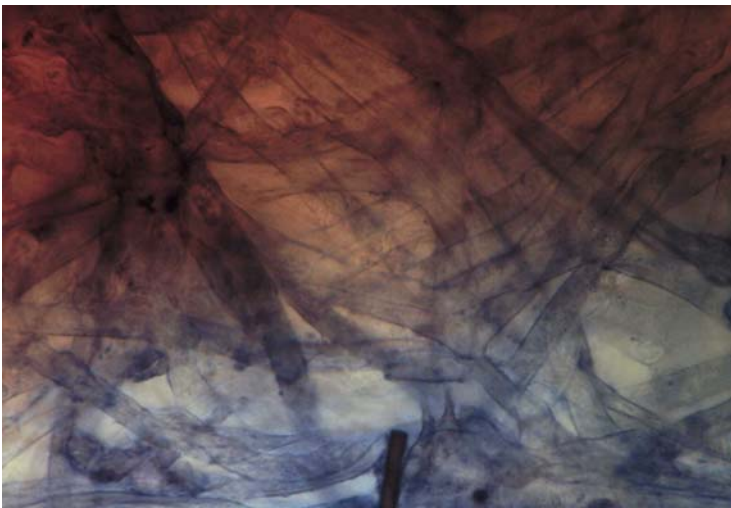
Tips

Monopodial pinnate root systems, with bent tips. White tip colour with a slight pinkish hue. Thick stringy texture, with many flat angle mycelial strands. Emanating hyphae also common.



Outer mantle

Felt prosenchyma, cells 4 μm wide, with some granular or oil-like bodies. Similar to emanating hyphae, but more compact and with some shadow effect.



Mycelial strands

Loose-undifferentiated mycelial strands, hyphae 4 μm wide, with few clamps and H-shaped anastomoses without clamps.

Emanating hyphae

Common, cells 4 μm wide, with granular contents at the septas, and few clamps. Few hyphal junctions, the hyphae are slightly swollen at clamped septa, and sometimes twisted and folded. H-shaped anastomoses without clamps are present.

