

Chroogomphus tomentosus

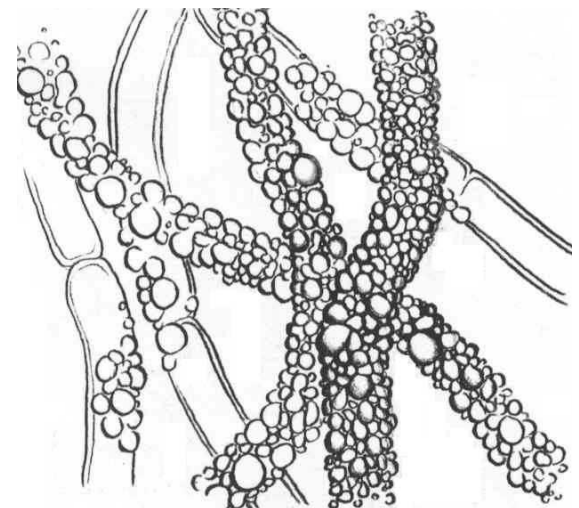
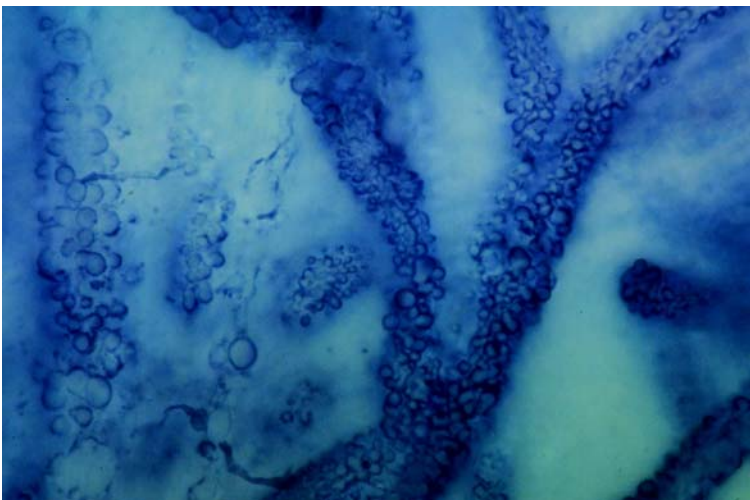
Tips

Monopodial pinnate root system with bent tips. Tips white, coarsely grainy texture and shiny, with host root sometimes visible. Few restricted point strands present, with few loose emanating hyphae.



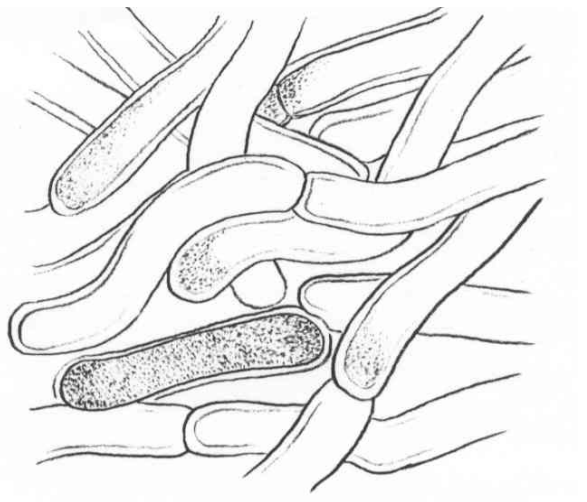
Outer mantle

Net prosenchyma, with large hyphae, cell width 8 μm (6-9 μm) with thick cell walls (1.5 μm wide). Very large bauble-like ornamentation (2 μm in size), sometimes appearing stalked. No clamps, some hyphal junctions.



Inner mantle

Net synenchyma, cell width 6 to 10 μm , length 15 μm (10-30 μm), no ornamentation, occasional granular contents, few septas, no clamps.



Mycelial strands

Loose-undifferentiated strands, width 6 to 10 μm , with similar bauble-like ornamentation. No clamps, hyphae clear with no junctions nor anastomoses.

Emanating hyphae

Few emanating hyphae, width 6-10 μm , with bauble-like ornamentation. Few septas, no clamps, and few hyphal junctions.
