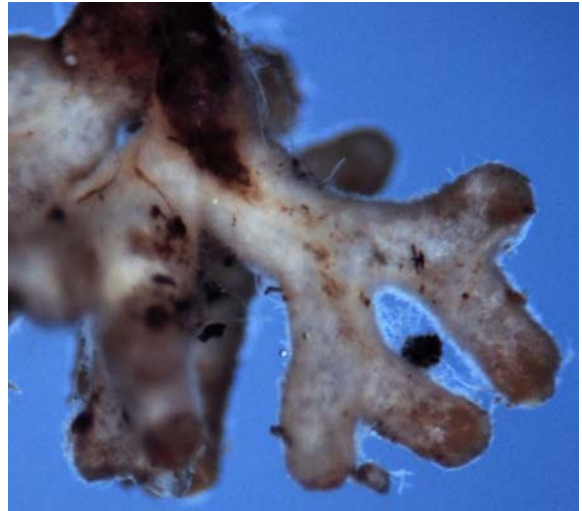


Chroogomphus rutilus

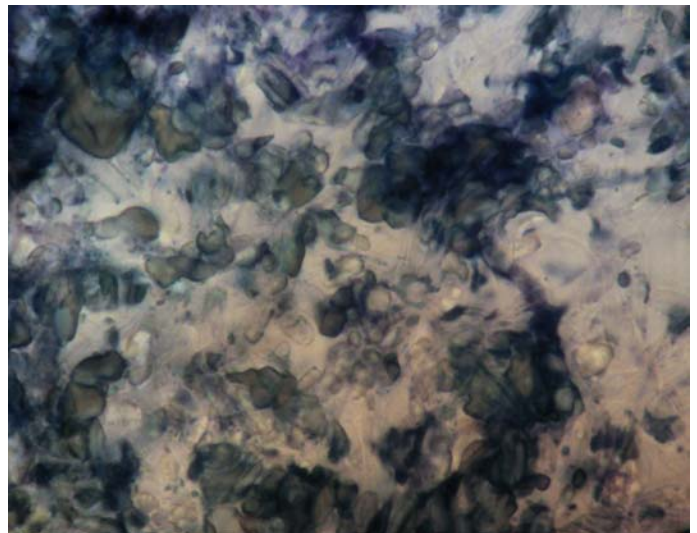
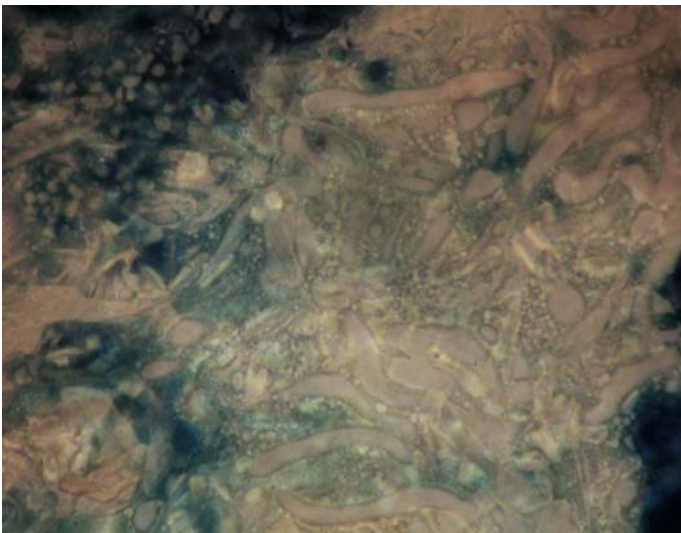
Tips

Coralloid root system with dichotomous tips. Tips white, more discoloured with age, felty texture with no host root visible. Few restricted point strands present.



Outer mantle

Very complicated mantle. A net prosenchyma, cell width 4 μm (3-5 μm), often pinched in at septa, no clamps and few hyphal junctions. Mantle obscured by numerous crystals and pockets of oil bodies.



Inner mantle

Net synenchyma, with both round cells (10 x 15 μm) and linear cells (4-5 μm wide), no ornamentation, no clamps. Septa sometimes quite large and dark, the inner mantle often difficult to see.

Emanating hyphae

Few emanating hyphae, width 8 μm , with large, globular ornamentation, up to 1 μm wide.

Cystidia

Few cystidia, might form part of the outer mantle, usually verrucose, with few septas, no clamps.

